

CITY OF DURHAM SPLASH & PLAY PROJECT

City Council Work Session
02.23.2023





01. PROJECT BACKGROUND



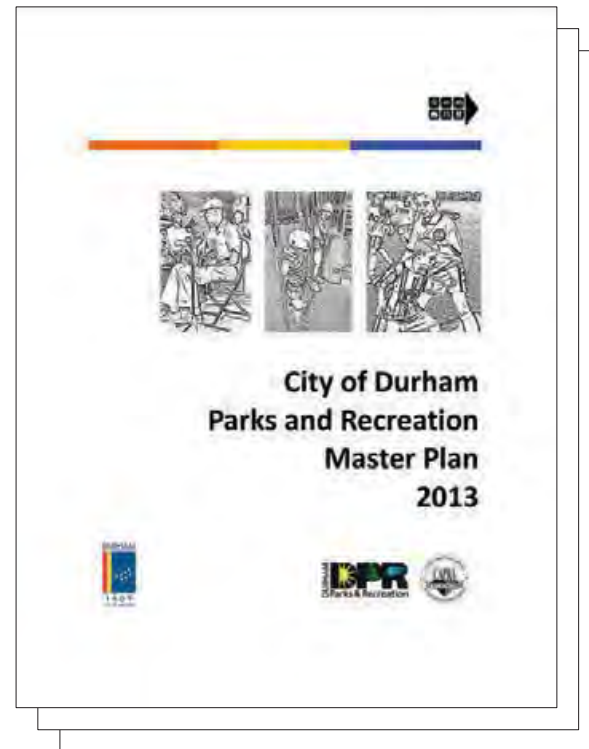
02. INVESTIGATIONS

EAST END PARK DURHAM, NC

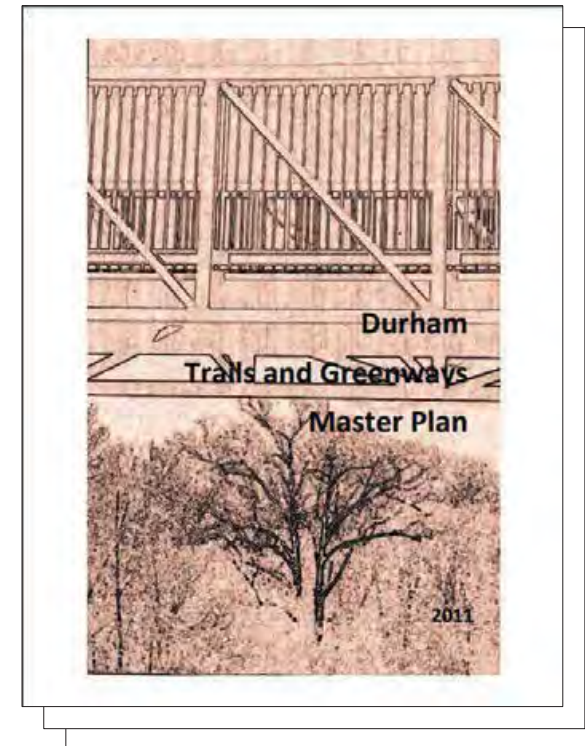
INFORMED BY PREVIOUS PLANS



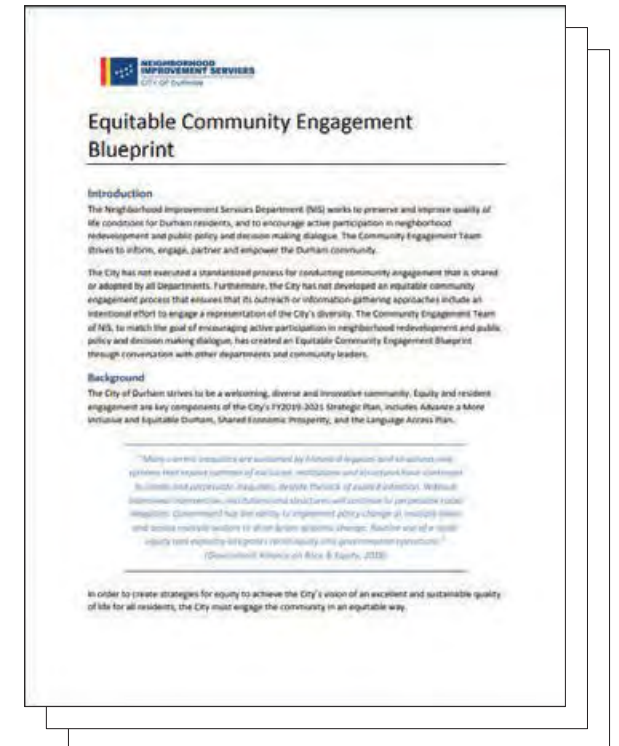
Durham, North Carolina
Aquatics Facilities Master Plan 2017



City of Durham Parks & Recreation
Master Plan 2013



Durham Trails & Greenways
Master Plan 2011



City of Durham Equitable Community
Engagement Blueprint

HISTORICAL CONTEXT



Combined Sanborn Maps at Long Meadow Park and future East End Park sites 1937



East End Pavilion construction 1949



ToToContest 1970



Children's Activity Long Meadow Park 1955



Mickle Community Center East End 1956



Sunrise Service Long Meadow Park 1956



Arial East End Park 1950



Wright Machinery Co. Plans for site adjacent to East Park 1950

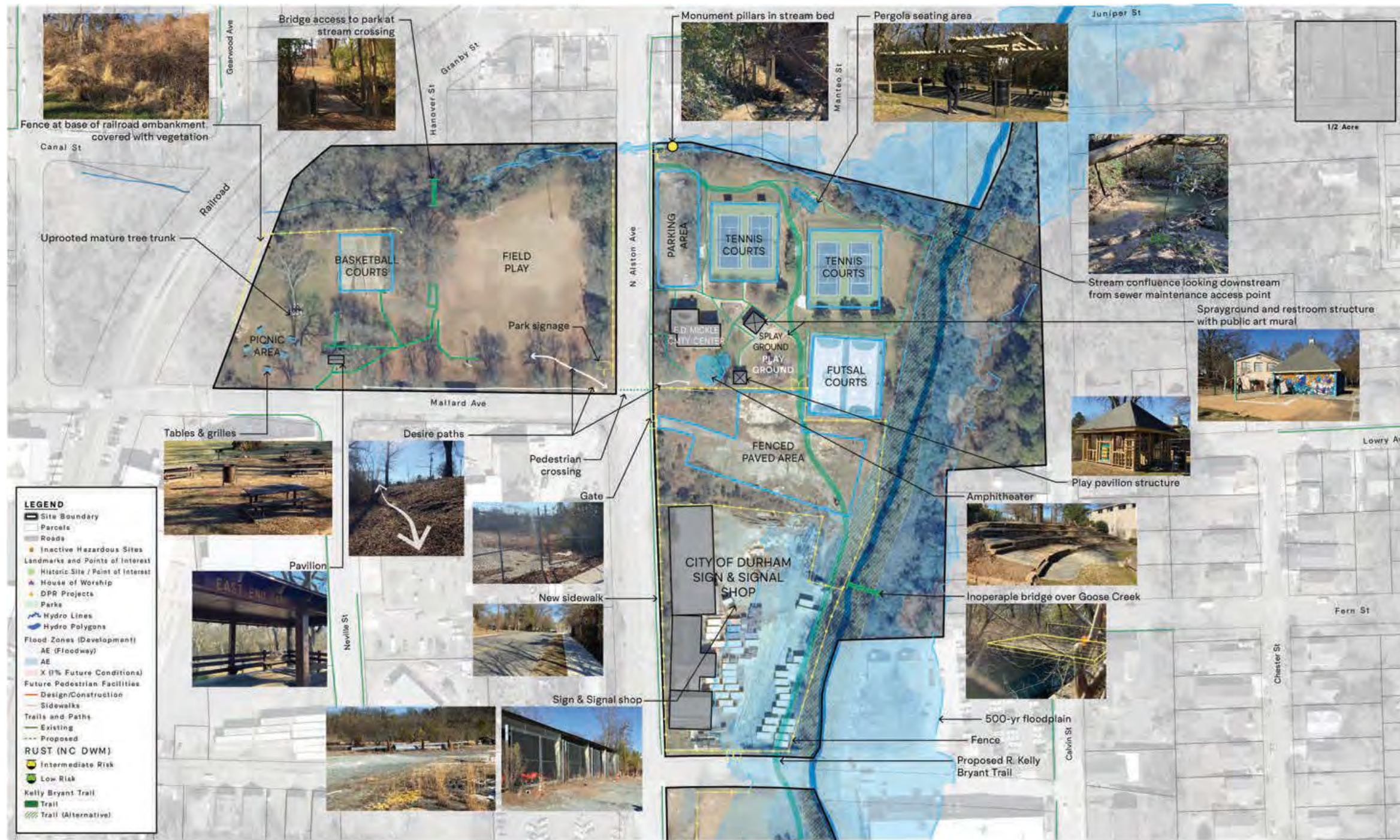


East End Park Fun Caravan 1980

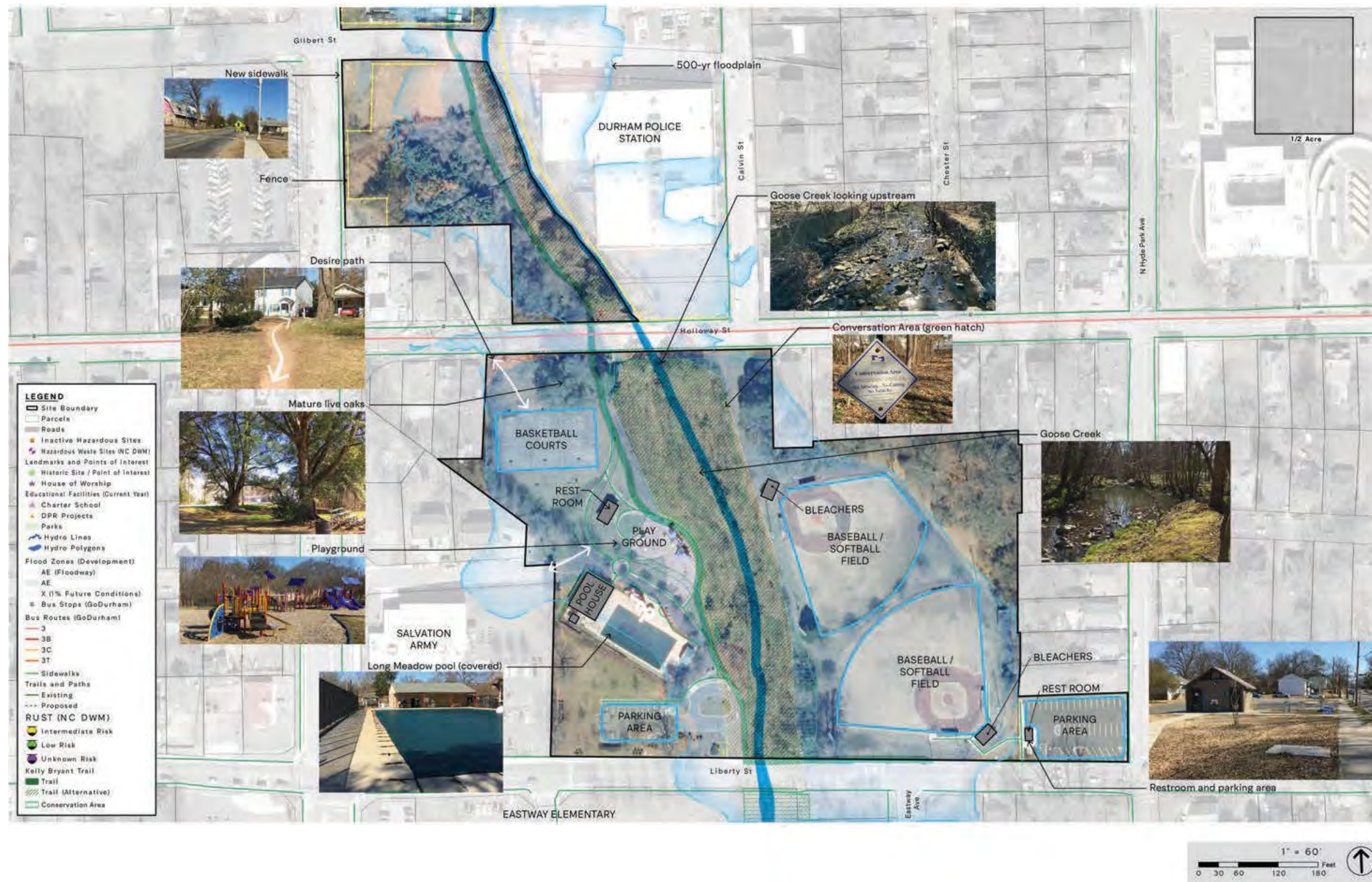


Arial View Long Meadow Park 1959

EAST END PARK EXISTING CONDITIONS



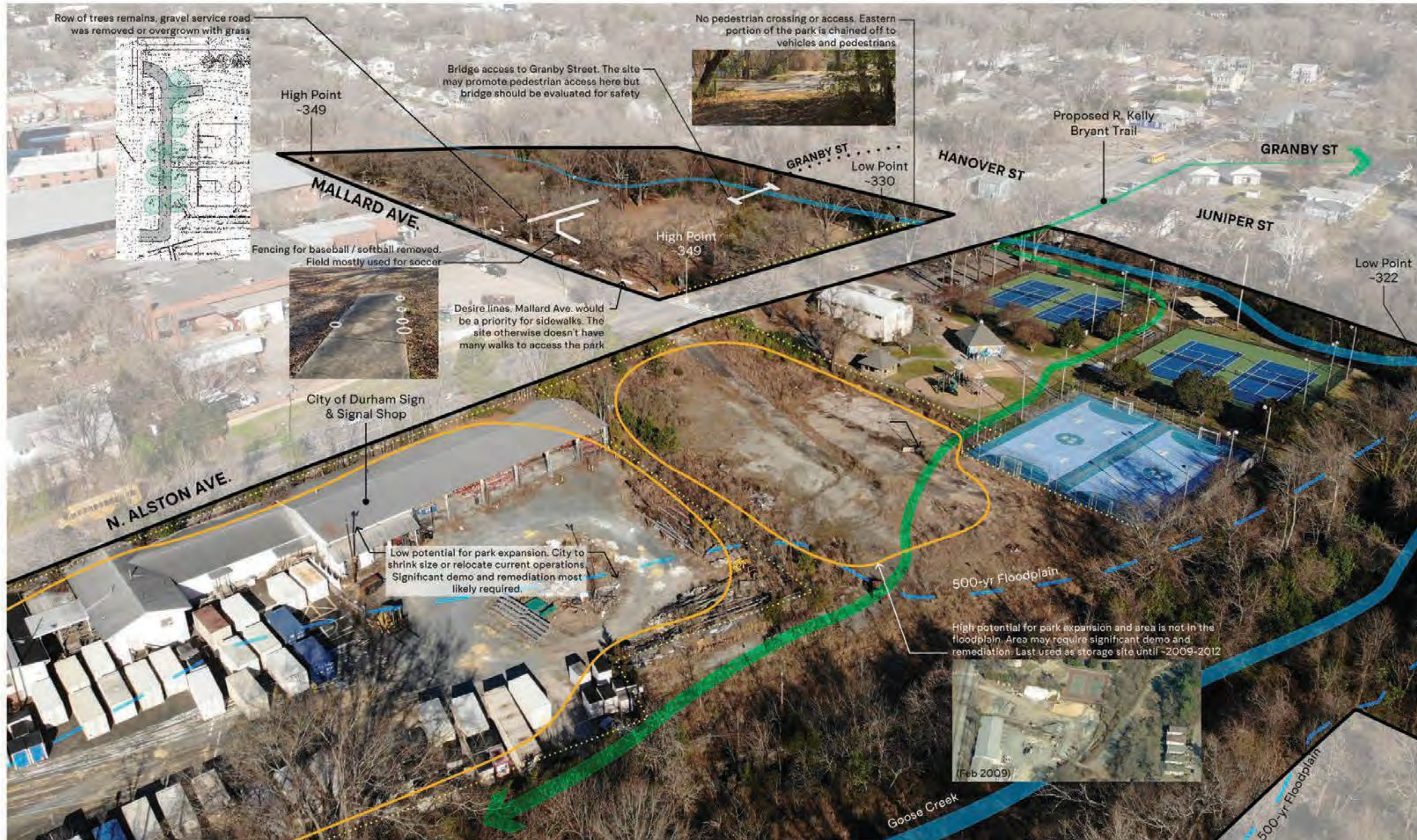
LONG MEADOW PARK EXISTING CONDITIONS



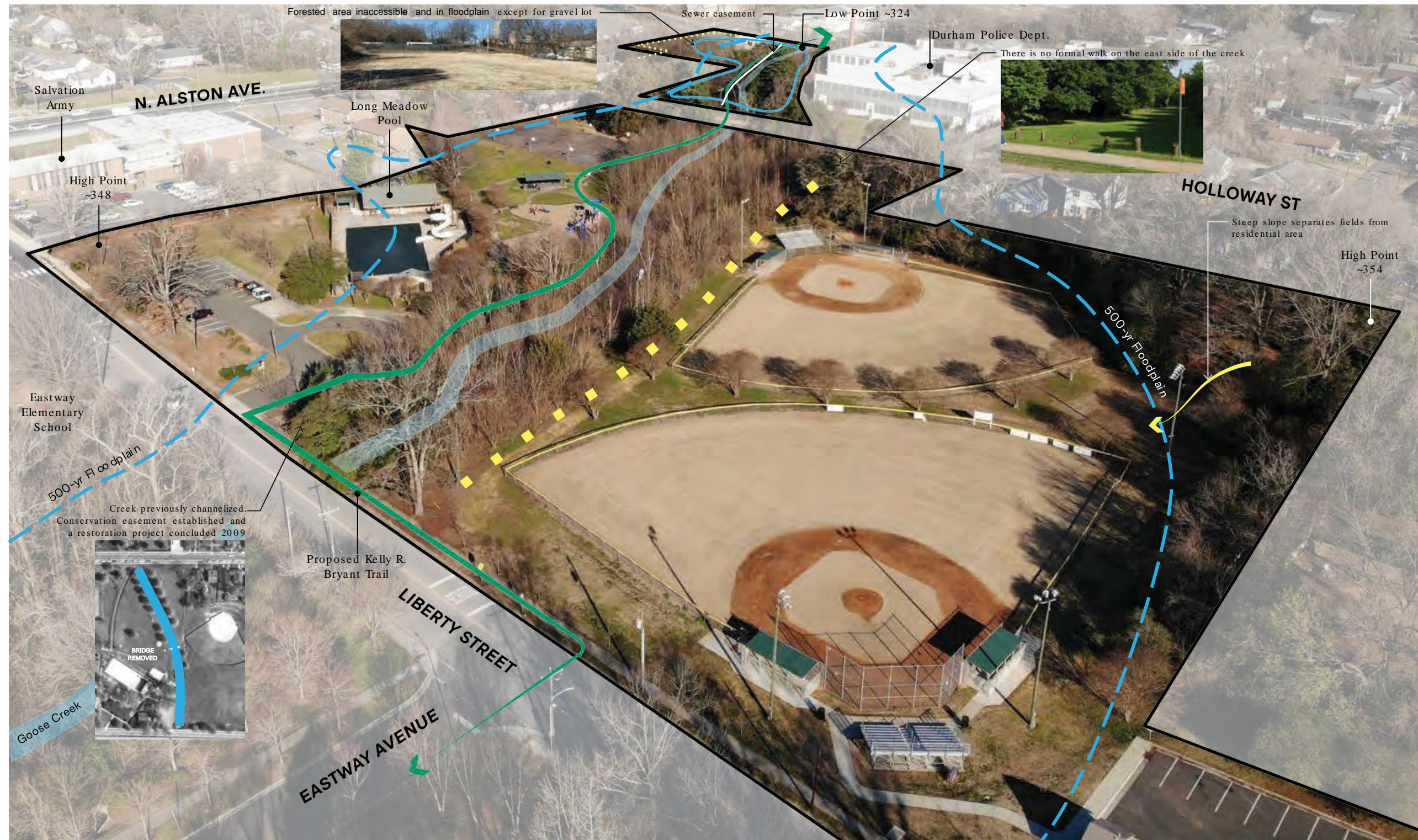
EAST END PARK SITE ANALYSIS



EAST END PARK SITE ANALYSIS



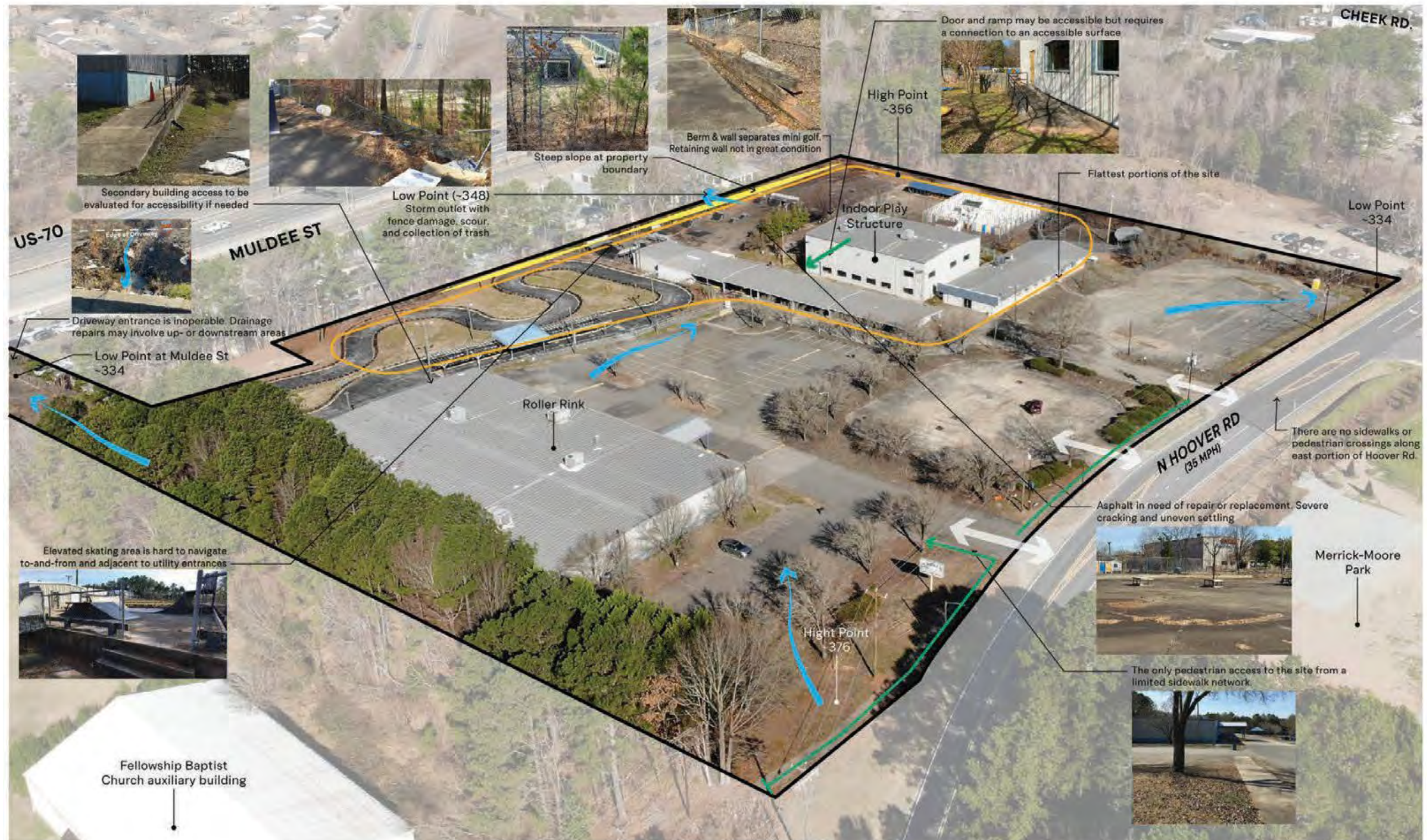
LONG MEADOW PARK SITE ANALYSIS



FORMER WHEELS FUN PARK EXISTING CONDITIONS



FORMER WHEELS FUN PARK SITE ANALYSIS



EXISTING CONDITIONS REPORT

EXISTING CONDITIONS REPORT

SPLASH & PLAY

CITY OF DURHAM PARKS & RECREATION

PREVIOUS PLANS

The consideration of developing a large outdoor aquatic facility for East Durham at the former Wheels Fun Park and assessing East End and Long Meadow parks for potential recreation and aquatic features is in response to undertaking the highest priorities from the 2017 Durham Aquatics Master Plan as is to meet the goals of the 2013 Parks and Recreation Master Plan. This East Durham aquatics feasibility project is the first phase springing from the 2017 Durham Aquatics Master Plan. The intent is to assess opportunities in East End Park, Long Meadow Park, and Wheels Fun for large and small aquatic facilities and general master planning. General master planning should meet goals of the 2013 Parks and Recreation Master Plan.

The aquatics master plan included data collection, development of a needs assessment, conceptual plans of potential facilities, and a recommended implementation strategy. The report concluded with a regional recommendation which favors fewer and larger aquatic facilities and prioritizes the East Durham area.

Durham has a significant swimming population and the aquatics master plan collected user data that highly favored more facilities. The statement is in contrast to the low ratio of swimmers to public aquatic facilities available. In addition to that, a number of existing facilities face physical and functional obsolescence. The East Durham area was highlighted as a high-priority neighborhood to evaluate current and future aquatic needs given the decline of the Long Meadow Pool.

The existing conditions report is part of the Investigations phase of the project among other evaluation, engagement, and envisioning processes. A projected timeline shows how the existing conditions report fits into the feasibility study.

2017 Durham Aquatics Facilities Master Plan

High priority facility types (Durham Aquatics Master Plan, 2017)

Projected lifespan of existing aquatic facilities (Durham Aquatics Master Plan, 2017)

Anticipated project schedule

SITES OVERVIEW

The project impact area is targeted at the East End, Albright, Welkons Village, and Merrick Moore neighborhoods plus the residents within a 5-mile travel distance from the sites. A travel distance is applied given that a large aquatic center tends to support residents within 5-miles of the facility (Durham Aquatics Master Plan, 2017).

The bordering areas are mostly majority-minority communities with a growing white population. Demographic reports from 2018 list the black population around Wheels Fun, East End Park, and Long Meadow Park to be 37%, 48%, and 51%, respectively. Similarly, the Hispanic populations are 54%, 32%, and 32%, respectively. A more detailed demographic account will be in the Public Input report.

East End & Long Meadow Park

The land for East End & Long Meadow Park was donated to the city and used to establish adjoining parks close to Alston Ave and Holloway St. Both parks are situated 1-mile from downtown Durham along transit lines in a fairly dense residential area with some industrial and commercial uses. Like many of the parks in Durham, the low-lying area was well-suited as park area as opposed to other development. A playground resides in East End Park and does not coincide with other Durham spraygrounds in the area. The Long Meadow Pool was constructed in the 1960's and is at the end of its lifespan. The pool's location in a floodplain has left it vulnerable to repeated flooding and ongoing maintenance issues.

Wheels Fun

The site is west of US-70 along Hoover Road just outside of the Merrick-Moore neighborhood. Wheels Fun will be across the street from Hoover Road Park, to be named Merrick Moore Park, which is a park and athletic complex completed in 2022. Wheels Fun had been a private recreation facility for about 40-years before being purchased by the City in 2021. With the intent of the site supporting an aquatic facility, Wheels Fun, as of April 2022, temporarily supports a Duke Health COVID-19 testing and vaccination site. While the site has numerous unused program elements, it does not have any existing aquatic facilities.

Durham County Context Map

	2010	2018
Black Population	54%	31%
White Population	27%	46%
Hispanic Population	36%	54%

	2010	2018
Black Population	59%	48%
White Population	17%	37%
Hispanic Population	33%	32%

	2010	2018
Black Population	60%	51%
White Population	18%	36%
Hispanic Population	32%	32%

Demographic information by race

SITE ANALYSIS

Site Analysis

The existing conditions at Wheels Fun Park offer a number of challenges and opportunities that will affect how to approach design solutions:

- The site has as much as 42' of elevation change across any one site boundary. Given the steep topography, the site was originally developed as a series of separated lots with sloped separations that are currently filled with large stone rip-rap and some limited tree cover.
- There is no discernible network of pedestrian circulation across the site apart from open parking areas. The only existing pedestrian walkways lie along N. Hoover Road, with one walk extending to the existing roller skating rink. There are no sidewalks or pedestrian crossings to connect to the east side of N. Hoover Road and to Merrick Moore Park. There are no pedestrian crosswalks delineating a safe crossing at the existing site curb cuts. Existing utility lines run along the east boundary of the site, along N. Hoover Road. They detract from the aesthetics of the main view corridor into the site and any future development will need to avoid conflicts with placement of accessways and plantings.
- There is no provision for ADA access across the site. There are currently no ADA parking spaces and very limited pedestrian walks that further limit the potential for universal access. The change of elevation across the site will present a challenge in locating program elements and providing for connections that meet ADA requirements.
- A majority of the site is currently impervious surface which will help to offset the potential need for stormwater devices in consideration of the development of the site. A majority of the pavement is asphalt which is in need of repair or replacement in many areas.
- There is a limited number of existing trees that might be considered for potential preservation and, of those, none are of great specimen value. These are limited to one oak tree on the north side of the previous car wash parcel and some assorted birch trees within the existing putt-putt area. A majority of the trees within the existing parking lots are Bradford pear trees that are at the end of their lifespan and look to already have damage from branches falling.
- There are some planting and hardscape materials within the existing putt-putt area that may be considered for reuse. There are a number of shrub and ornamental grass plantings and natural stone material from stone walls and edging that could be considered for reclamation to use on-site or on other DPR sites.
- The west edge of the site presents a challenge with the severely steep slope that was created when the site was first developed. In the absence of retaining structures or vegetative cover and with continued damage from the storm outlet that drains a majority of the site, this slope will likely continue to degrade and erode.

Wheels Fun zoning diagram (Durham Open Data Portal, 2022)

Wheels Fun circulation diagram (Durham Open Data Portal, 2022)

Existing billboard on Mulroe St.



03. ENGAGEMENT PHASE 1

BIMBE BLOCK PARTY HOLTON CAREER & RESOURCE CENTER, DURHAM

SPLASH & PLAY PUBLIC ENGAGEMENT PLAN



**SPLASH AND PLAY PROJECT
PUBLIC ENGAGEMENT PLAN**

CITY OF DURHAM

May 20, 2022



1



Figure 3: Aerial view of Long Meadow Park off N. Aston Avenue and Liberty Street



Figure 4: Aerial View of the former Wheels Fun Park site on Hoover Road south of Cheek Road and east of Highway 70.

The 10-month process (Figure 5) will include an engineering and architectural investigation of the sites and buildings, conceptual designs, and final recommendations. Community engagement will inform conceptual design and recommendations.



Figure 5 Project timeline

4

Nextdoor (resident's accounts), survey, and social media. The Residents Committee will be instrumental in determining the best methods.

Table 2: Engagement Strategies Matrix

	Activity	Frequency	Methods	Target Audience
Executive & Analysis	Core team meetings with key department decision makers	Quarterly	Virtual/In-person	General Services, Parks & Rec, Consultants
	Technical Committee	Monthly	Virtual/In-person	Community input from multiple departments, Public Works, Planning, GIS, Transportation/Paratransit
	Resident Committee	Monthly	Provide options for engagement activities, identify opportunities for feedback	Residents, community partners, youth, faith-based groups, education institutions, nonprofits and local civic organizations
	Focus/Workshop Group responses	As needed at key milestones, up to 5	Meet with interest group focused on specific area of interest	Local residents, nonprofits, institutions, and organizations
Topic	Community Conversations	Occasional social interactions	Project team members, community partners, youth	Public: East Durham focus
	Change Request Board	Prior to project kick-off	Open with specific message that identifies project and engagement opportunities	Public: East Durham focus
	Website	Prior to project kick-off, updates as milestones	Provide link, identify contact, link to social projects	Public
	Clean-up Social Media Presence	Identify and respond to other during key milestones	Posting updates, announce project and opportunities for involvement	Public
	Outreach and Promotional Materials	As key milestones for each project	Postcards, signs, post signs, banner's, newsletters, distribute via mail and pop-up events	Public: East Durham focus
	Public Meetings/Workshops	Up to 2 virtual and in person	Events for input and professionals on issues of short and final documents	Public: East Durham focus
Email	Project Email Contact	Prior to project kick-off	Develop project communication opportunities, respond to comments, another order to	Public
	Online Surveys	As needed, with a goal of consistency with other projects/ surveys	Share on platform that 200+ users and of rapid results, quantitative and qualitative, post and updates as needed	Public
	Media and Community Relations	As needed at key milestones	Work with local and community partners to focus on local media outlets	Public: East Durham focus
Partnerships	Proactive and responsive opportunities	Support a local, resident, or other community group	Public: East Durham focus	
Final	Public Engagement Summary Report, Month checks	Upon completion of key engagement milestones	Review and final report, ensure feedback and input aligns with final design, adjust as needed	2022/2023 Public

11

DEMOGRAPHICS

Black or African American Population

Year	Feature Value	County Average
2010	57.9%	53.8%
2015	42.2%	33.7%
2016	47.5%	37.2%
2017	42.6%	36.8%
2018	44.8%	36.5%
2019	43%	

White Population

Year	Feature Value	County Average
2010	35.1%	42.7%
2015	17.4%	42.7%
2016	15%	42%
2017	15%	42.1%
2018	14.7%	42.8%
2019	16%	41%

25



Full plan is available on the project website

ASSESSING DEMOGRAPHICS

East End Park	2010	2015-2019
Black Population	56%	45%
White Population	23%	45%
Hispanic Population	28%	29%
Long Meadow Park	2010	2015-2019
Black Population	59%	50%
White Population	20%	40%
Hispanic Population	29%	30%
Wheels Fun Park	2010	2015-2019
Black Population	54%	38%
White Population	21%	40%
Hispanic Population	36%	46%

Source: 2010 US Census Report and the 2015-2019 American Community Survey (ACS Summary Report & EPA EJ Screen tool. This data is for a one-mile radius around each site's center point.

- Comply with City's Equitable Community Engagement Blueprint
- Fair and just participation by residents
 - East Durham focus
- Changing demographics
- Data-driven and performance measured
- Engagement plan and schedule
- Informed by our partners in the community
- Materials in Spanish and translator at events

RESIDENT STEERING COMMITTEE

MEMBER RESPONSIBILITIES

- Attend 6 meetings (late afternoon & evening)
- Ensure diverse participation by residents, businesses, and institutions within the study areas
- Provide input on the Public Engagement Plan (PEP) and events
- Share project information within your networks
- Contribute to relatable messaging
- Review and comment on documents & concepts

Bonita Green

**Merrick Moore Community Development Corp/
InterCity Neighborhood Council of Durham**

Cynthia Cukiernik

Merrick Moore Community Coordinator

Naadii Salaam

Bull City Trailblazers

A'lice Frazier

Durham Office on Youth

Tianna Judd

Durham Office on Youth (student)

Clif Jackson

Roller Skating Enthusiast

Stephanie Smith

Wheels Fun Park Advocate

Ron Sutherland

Regional Aquatics User/Advocate

Alan Rigsbee

Northern High School Athletic Director

Midori Brooks

East Durham Resident

Sherrill Saba

East Durham Resident - Holloway St

Almira Marshall

Durham Equity & Inclusion Team/ E. Durham Resident

Angel Dozier

Be Connected Durham / NIS Community Partner

Humberto Trejo

Latinx Community

Vanessa Alford

Merrick-Moore Elementary School Principal

Cedric Burke

Recreation Advisory Commission

DeWarren Langley

Protecting Our Dignity in Education Director

Levon Barnes

Young Male Achievers Founder, Teacher, Last DJ at WFP

Joanne Andrews

LGBTQ Community Interests

Vanessa Evans

Braggtown Community Association

Don Jones

WFP Skate Park Advocate

Gideon Bueno

WFP Skate Park Advocate

Krista Saunders

Disability Community Advocate



ENGAGEMENT METHODS

- Virtual and in -person
- Community Conversations – Shared stories, community history & culture
- Open Houses
- Web Presence
- Social Media
- Pop-up Events
- Survey
- DIY Kits
- Community and faith-based networks
- Community liaisons
- Spanish Translation



ENGAGEMENT METHODS - SAMPLING OF WORKSHOP BOARDS

TELL US WHAT DO YOU WANT TO KEEP? GET RID OF? ADD?
 ¿Cuéntanos qué quieres conservar? ¿Eliminar? ¿Añadir?

EAST END PARK
 Durham Splash & Play | Chapoteo y Juego de Durham

TELL US WHAT DO YOU WANT TO KEEP? GET RID OF? ADD?
 ¿Cuéntanos qué quieres conservar? ¿Eliminar? ¿Añadir?

LONG MEADOW PARK
 Durham Splash & Play | Chapoteo y Juego de Durham

TELL US WHAT DO YOU WANT TO KEEP? GET RID OF? ADD?
 ¿Cuéntanos qué quieres conservar? ¿Eliminar? ¿Añadir?

FORMER WHEELS FUN PARK
 Durham Splash & Play | Chapoteo y Juego de Durham

WHERE HAVE YOU BEEN AND HOW DID YOU GET THERE?
 ¿Dónde has estado y como llegaste ahí?

DURHAM SPLASH & PLAY
 Chapoteo y Juego de Durham

PLACE A STICKER NEXT TO THE FEATURES YOU LIKE THE BEST
 Pon una etiqueta junto a las características que más te gusten

AQUATICS
 Durham Splash & Play | Chapoteo y Juego de Durham

PLACE A STICKER NEXT TO THE FEATURES YOU LIKE THE BEST
 Pon una etiqueta junto a las características que más te gusten

AQUATICS
 Durham Splash & Play | Chapoteo y Juego de Durham

PLACE A STICKER NEXT TO THE FEATURES YOU LIKE THE BEST
 Pon una etiqueta junto a las características que más te gusten

PLAY ELEMENTS
 Durham Splash & Play | Chapoteo y Juego de Durham

ORGANIZED BY TYPE OF POTENTIAL ELEMENT

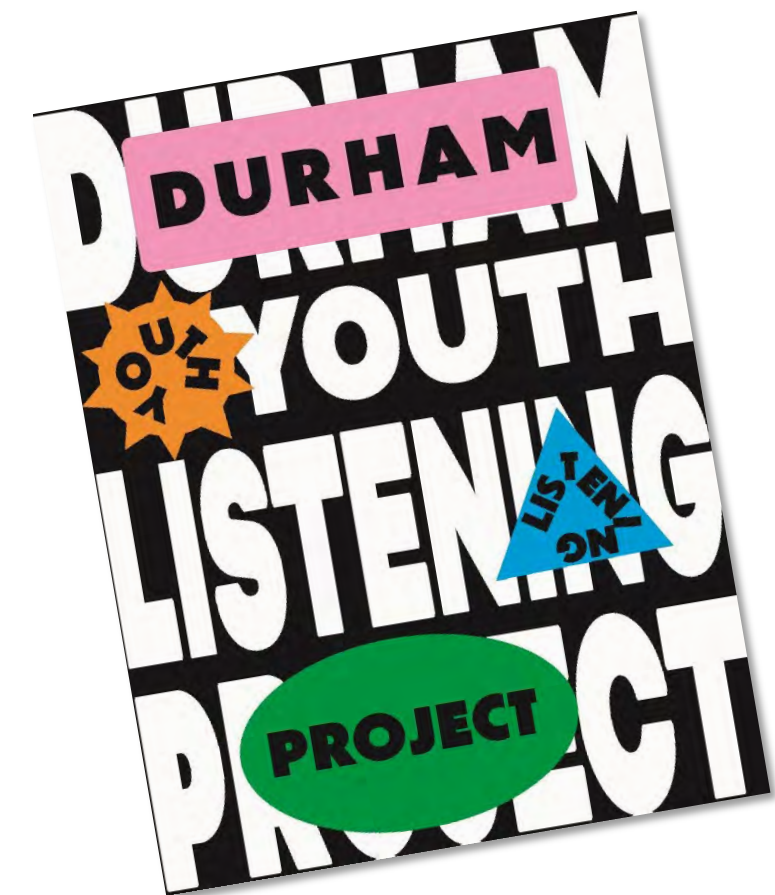
- ACTIVE
- PASSIVE
- FEATURE
- PLAY
- AQUATIC FEATURE

STAKEHOLDERS AND EVENTS

Stakeholders & Events	
Mount Zoar Baptist Church	Live! Fayetteville Street Corridor 3 rd Friday Art & Business Walks
Fellowship Baptist Church	Merrick Moore CDC Monthly Meeting
Wings of Eagles Christian Church	Pac 1 Monthly Meeting
Greater St. Paul Missionary Baptist Church	Bragtown Community Association Meeting
Shepherd's Flock Church	Wheels Vaccination/Testing Site
East End & Long Meadow Parks	Hoover Road Park Games
Protecting our Dignity in Education	La Pulguita
The Salvation Army Durham	Bimbe Celebration
Holton Career and Resource Center	Hayti Heritage Center Multiple Events
Southern High School	Spring Fling - DPR
Merrick Moore Elementary	Earth Day - DPR
W.D. Hill Recreation Center	Rock the Park Concert Series - DPR
NCCU Certification Course	July 4 th Celebration - DPR
Tienda Mi Pueblo	

WE NEED YOUR INPUT

- Citywide project with focus on East Durham
- Identified by committee –we are just beginning!
- Listen to everyone



PHASE 1 - ENGAGEMENT SUMMARY

- Summary report available on the website
- Questions and responses for all 3 park sites
- 1211+ participants (731 survey respondents)
- 27703 had most participants



Holloway Street Live! – Wellons Village Shopping Center

At left: Three of five open house attendees who shared stories of equity, gentrification, aquatics, recreation, and roller skating culture past and present.

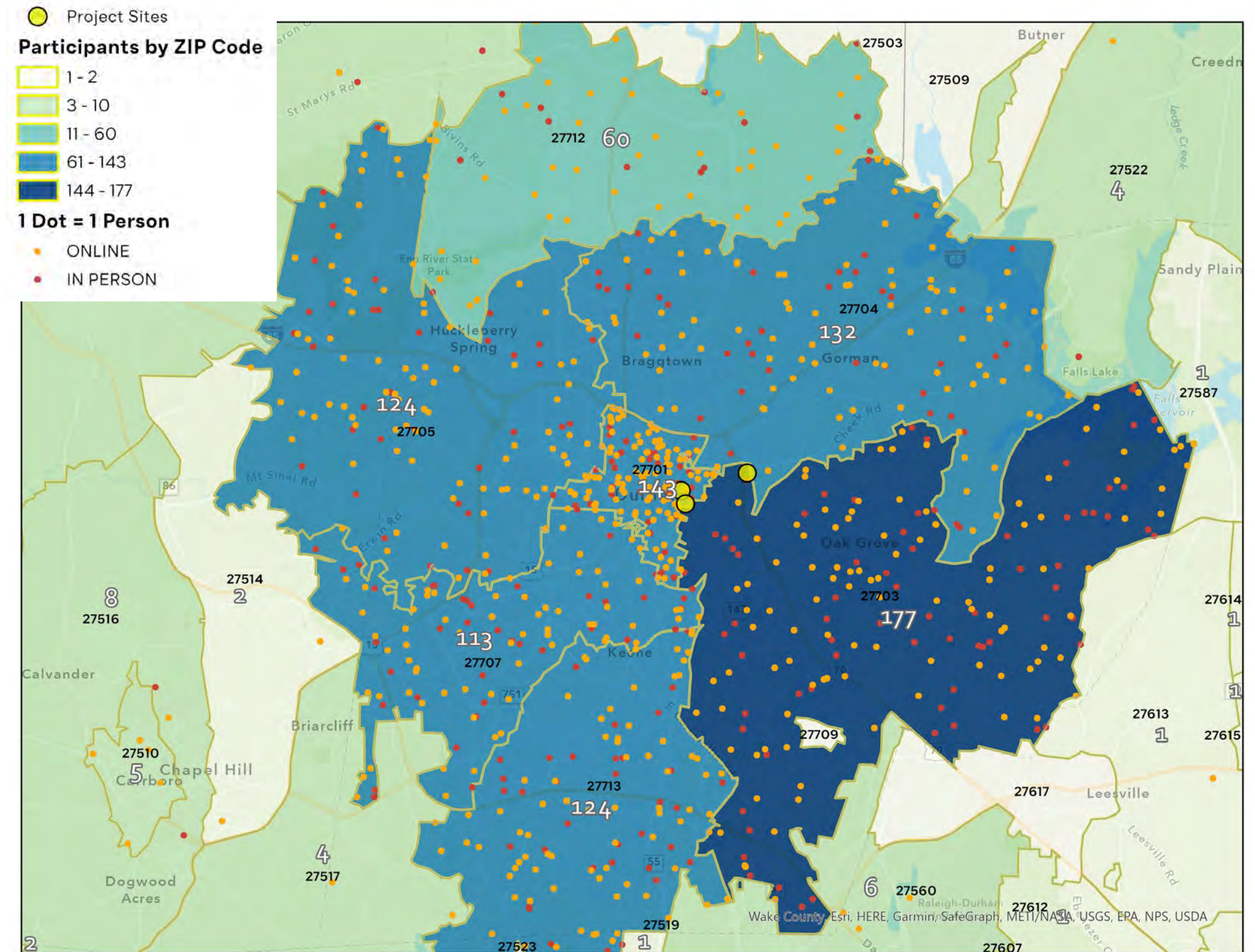


Full summary report is available on the project website

PHASE 1 - ENGAGEMENT RESULTS

Distribution of participants by zip code

- 27703 (177)
- 27701 (143)
- 27704 (132)
- 27705 (124)
- 27713 (124)
- 27707 (113)



PHASE 1.5 – TARGETED ENGAGEMENT

- Posted on Nextdoor 7/19 to neighborhoods near the parks
- Online survey in English and Spanish
- Email, voicemail, and direct messages sent to churches within 1¼ mile of Long Meadow and East End Parks
- Pool popup events: LM Pool, July 23, 25, 27, and August 12; Hillside Pool, August 12-14
- Offer print surveys and recreational feature visual preference activity



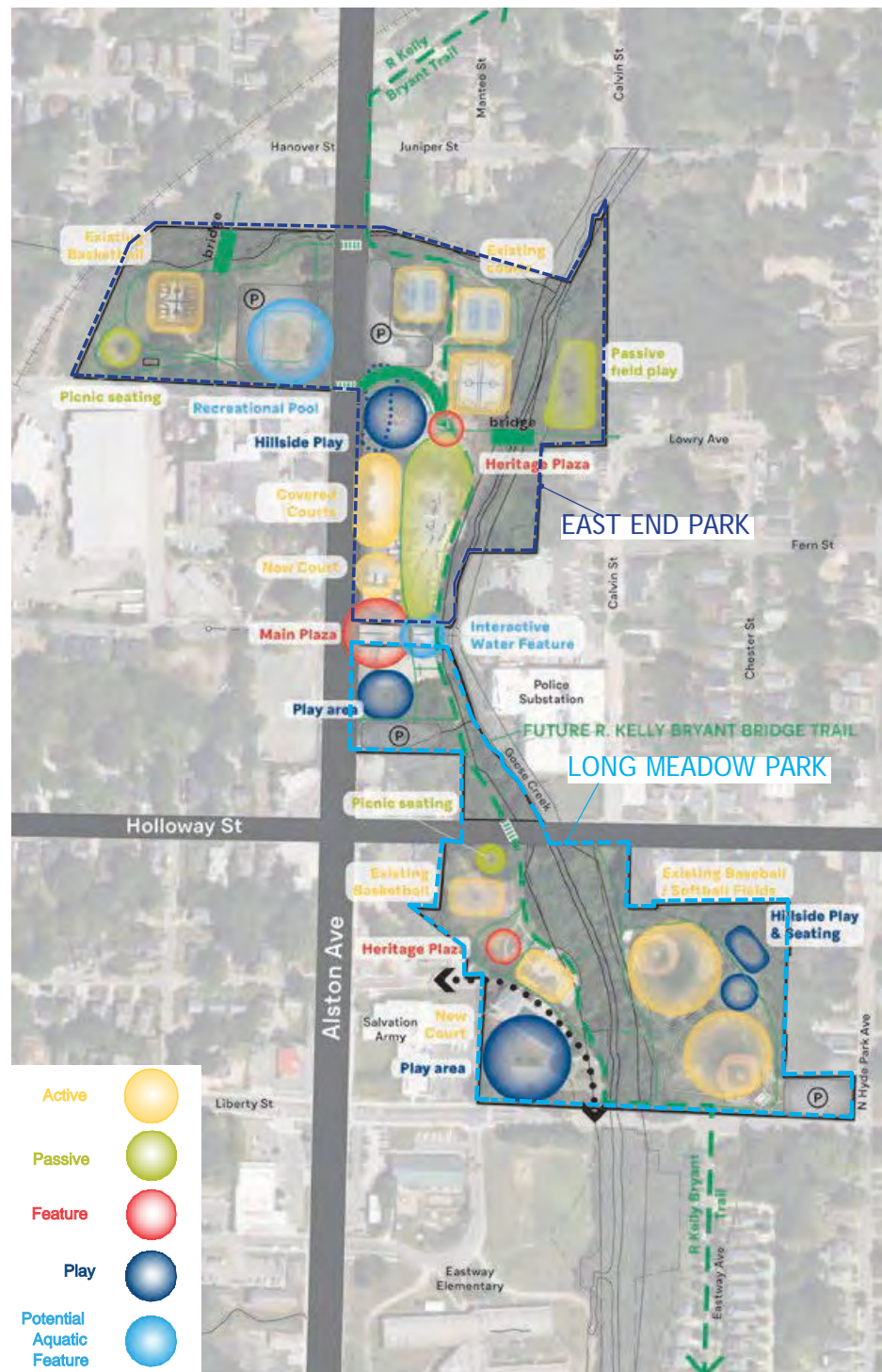
Hillside Pool recreational feature voting



04. ENVISIONING

FISHERS CENTRAL GREEN FISHERS, INDIANA

EAST END & LONG MEADOW PARKS PRELIMINARY PROGRAMMING DIAGRAMS



Site Diagram A

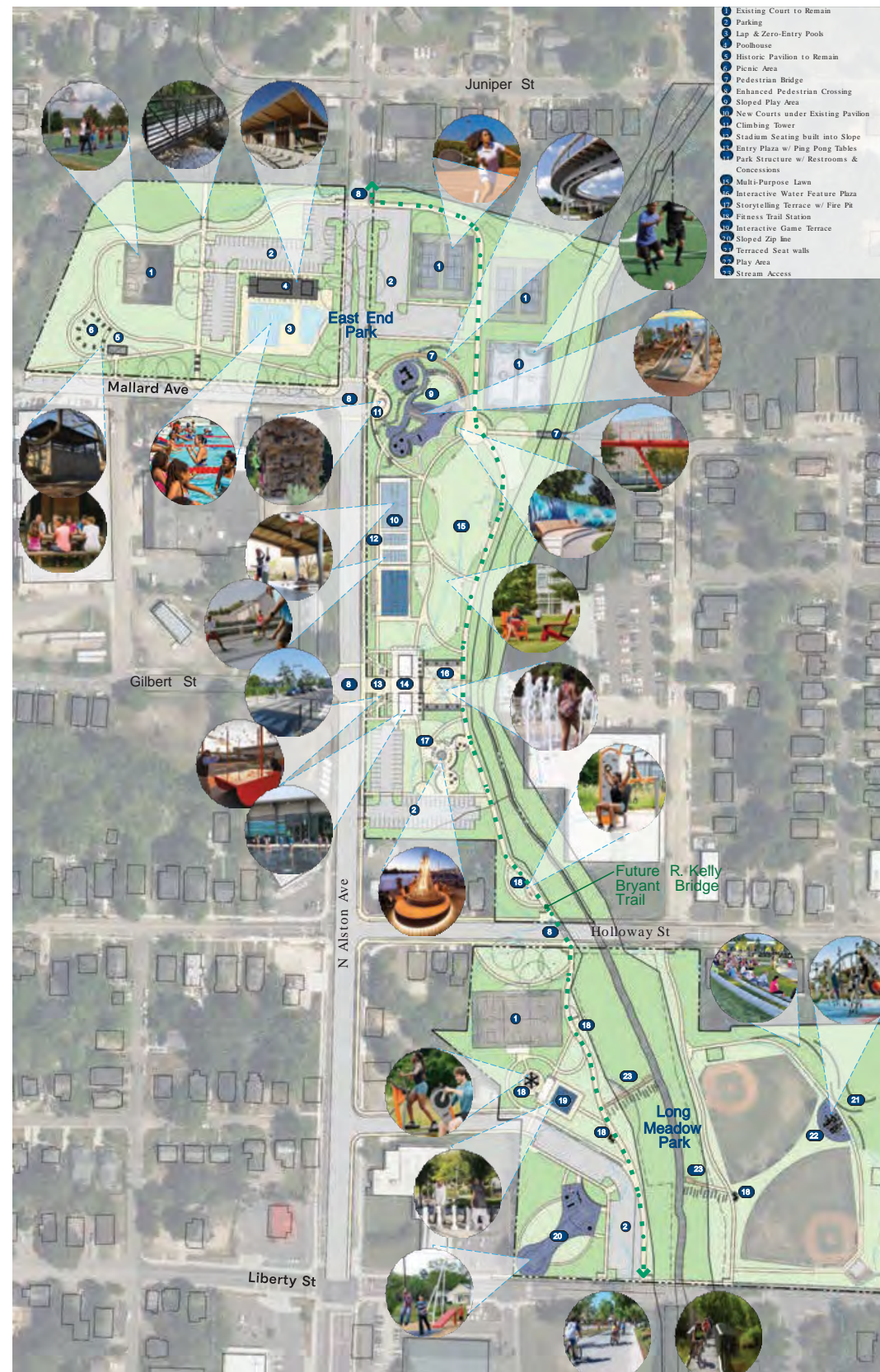


Site Diagram B

LAYOUTS ORGANIZED BY TYPE OF POTENTIAL ELEMENT

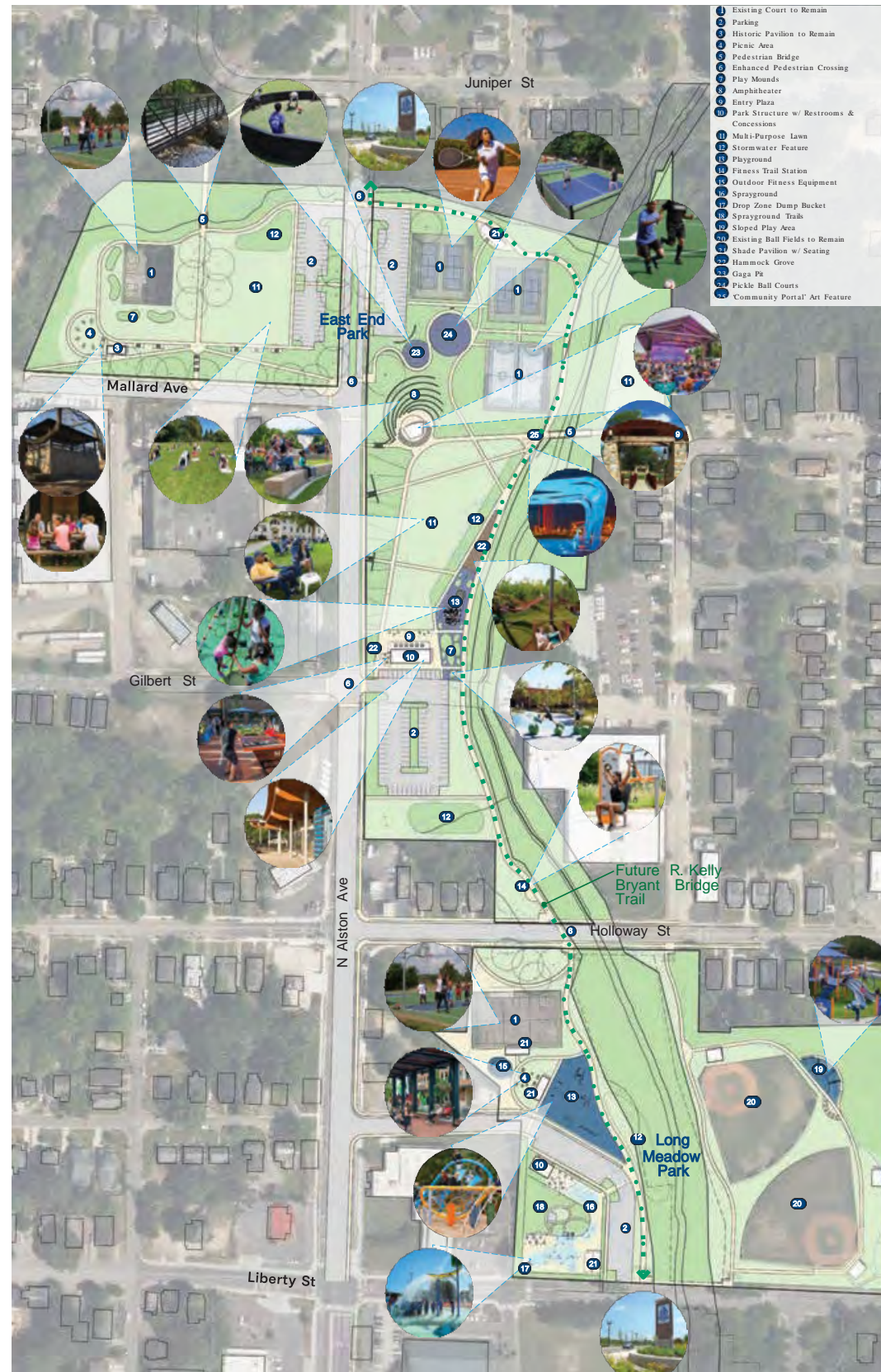
- ACTIVE
- PASSIVE
- FEATURE
- PLAY
- AQUATIC FEATURE

EAST END & LONG MEADOW PARKS SITE CONCEPT 1



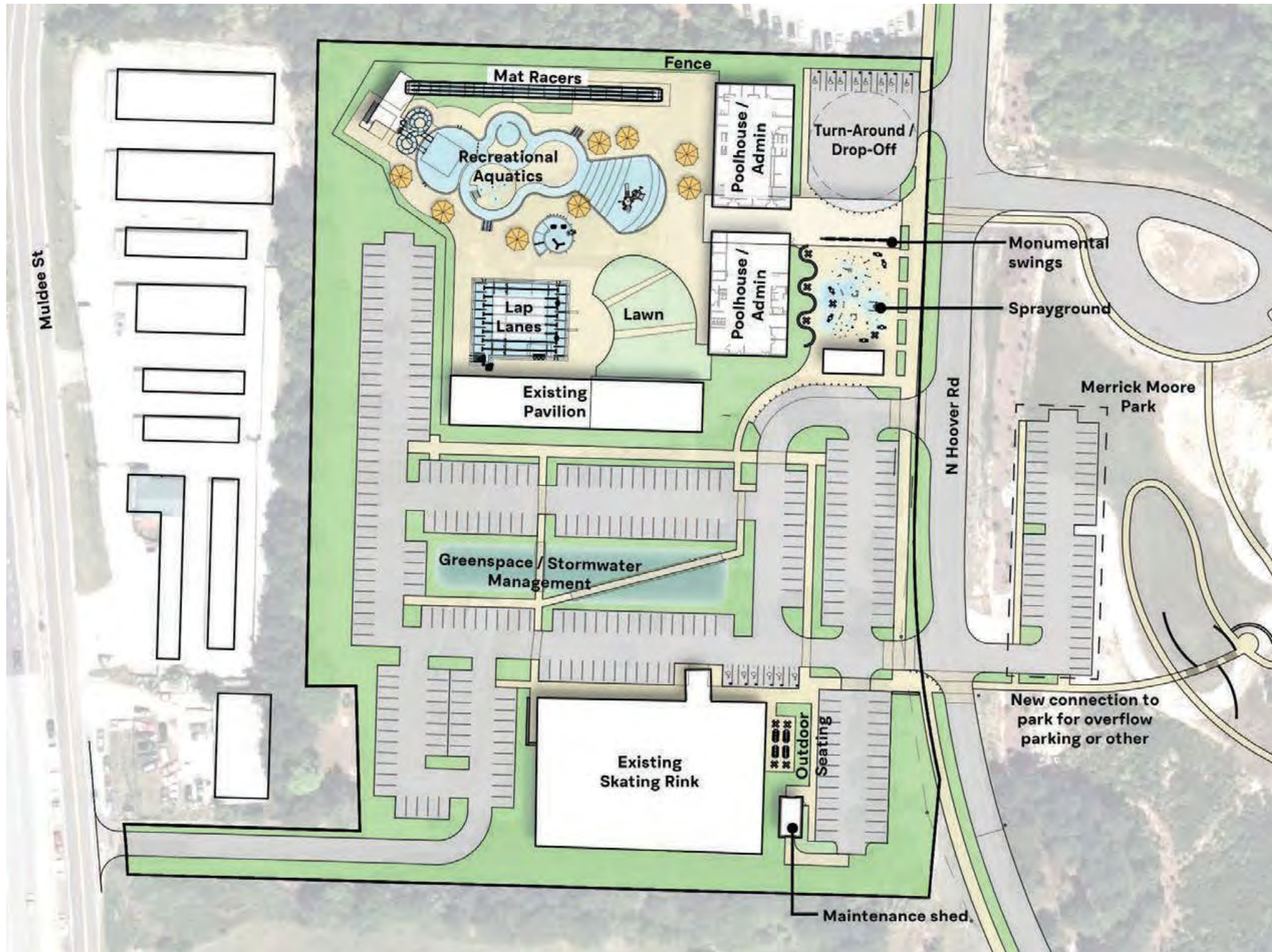
- POTENTIAL NEW POOL AT EAST END PARK
- SLOPED PLAY AT LONG MEADOW POOL AREA
- CENTRAL COMMUNITY PLAZA
- BRIDGE CONNECTION FROM N ALSTON AVE
- PRESERVE SIGN/SIGNAL SHOP PAVILION
- RETAIN EXISTING ATHLETIC COURTS/FIELDS

EAST END & LONG MEADOW PARKS SITE CONCEPT 2



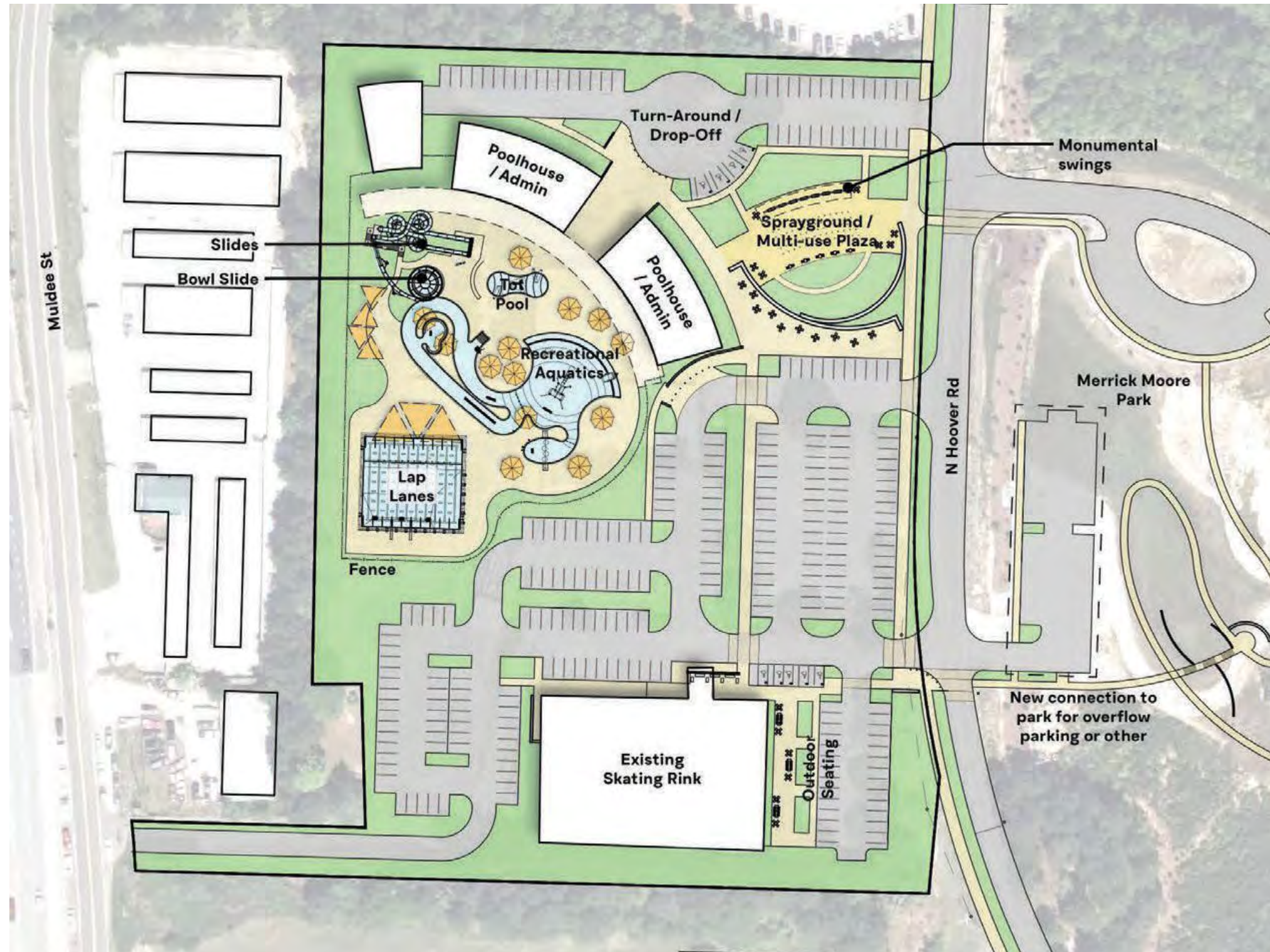
- LARGE EVENT VENUE / AMPHITHEATER / STAGE
- GREAT LAWN
- SPRAYGROUND AT LONG MEADOW POOL AREA
- RETAIN EXISTING ATHLETIC COURTS/FIELDS

FORMER WHEELS FUN PARK CONCEPT 01



- PRESERVE WHEELS FUN SKATING RINK
- AQUATICS CENTER AT NORTH
 - *Specialty mat racer slide
 - *25y x 25m lap pool
 - *Lazy River
 - *Interactive Play Element
 - *Zero Depth Entry Rec. Pool
- CIVIC PLAZA W/ SPRAYGROUND
- PRESERVE EXISTING PAVILION
- STORMWATER FEATURE

FORMER WHEELS FUN PARK CONCEPT 02



- PRESERVE WHEELS FUN SKATING RINK
- AQUATICS CENTER AT NORTHWEST
 - *Specialty bowl slide
 - *25mx25m lap pool
 - *Lazy River
 - *Interactive Play Element
 - *Zero Depth Entry Rec. Pool
- CIVIC PLAZA W/ SPRAYGROUND
- MULTI-USE PLAZA/EVENT SPACE
- REDUCED PARKING POTENTIAL

FORMER WHEELS FUN PARK CONCEPT 03



- PRESERVE WHEELS FUN SKATING RINK
- AQUATICS CENTER AT NORTHEAST
 - *Specialty deep pool area
 - *6-lane, 25y lap pool w/ ninja cross
 - *Lazy River
 - *Interactive Play Element
 - *Zero Depth Entry Rec. Pool
- CIVIC SPACE W/ SPRAYGROUND, PLAYGROUND & GAME TABLES
- PAVILION & LAWN EVENT SPACE
- MAX PARKING POTENTIAL



04. ENGAGEMENT PHASE 2

ENGAGEMENT PHASE 2

1400+ Participants (direct mail postcard, at popup events, PAC 1, 4/5 meetings, online)

310 Survey (Phase 2) participants

EVENTS

Date	Event	Time	Location
9/15/2022	DPR S&P Presentation	1pm-5pm	Holton Career & Resource Center
9/16/2022	Fayetteville Street Live!	5pm-8pm	Hayti HC & WD Hill Rec Ctr
10/8/2022	PAC 4/5 Meeting	10am-12pm	I.R. Holmes Senior Rec Center
10/13/2022	Wheels Fun Park Workshop	5-7pm	WFP
10/15/2022	PAC 1 Meeting	10am-12pm	Holton Career & Resource Center
10/15/2022	Baseball - Fall Ball & Soccer practice	9:30am-12:00	Long Meadow Park
10/21/2022	Soccer	5:30-7pm	Merrick Moore Park
10/22/2022	Durham Girls Soccer League (DGSL)	9am-12:30pm	Merrick Moore Park
10/28/2022	Trunk or Treat	6pm-8pm	Holton Career & Resource Center
11/1/2022	Student Lunch Popup	11am-1pm	Holton Career & Resource Center
11/3/2022	LM-EE Workshop	5pm -7:30	WD Hill



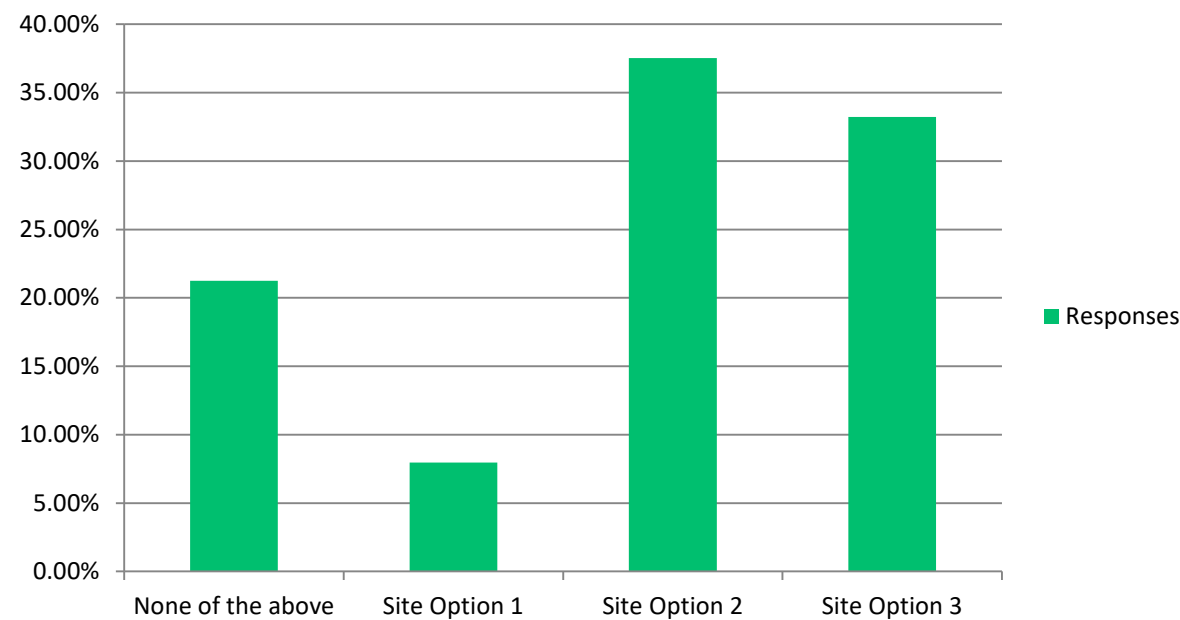
PHASE 2 – SURVEY

- 310 responses - English
- 0 responses – Spanish
- Open for 30 days



FORMER WHEELS FUN PARK

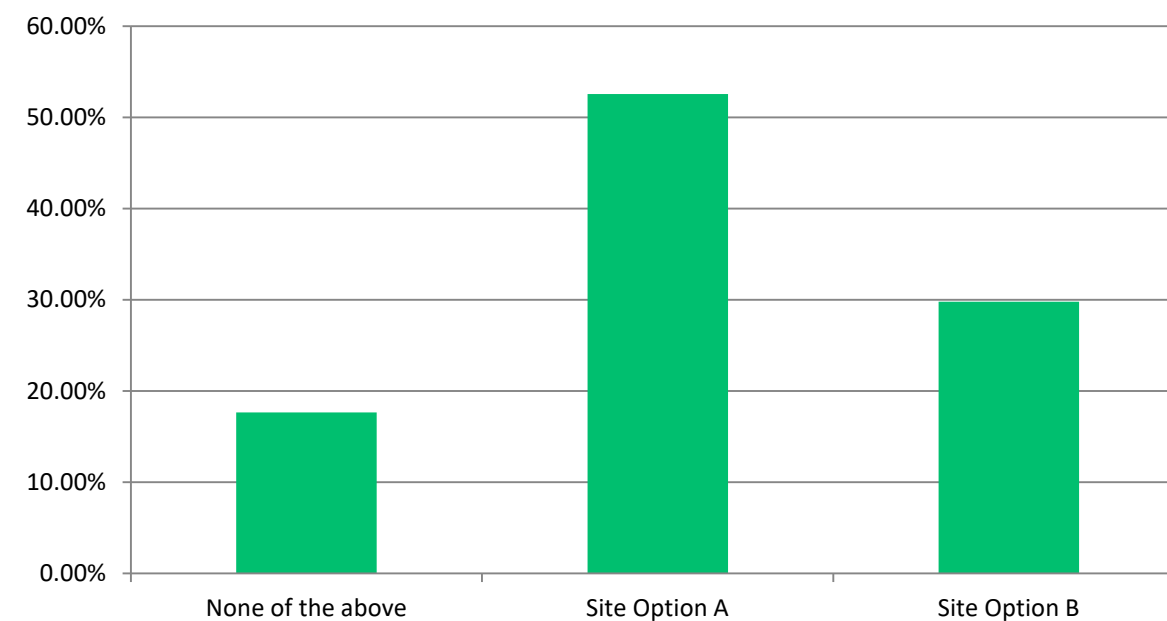
Which site option do you like the best?



- Site option 1 – 8%
- Site option 2 – 38%
- Site option 3 – 33%
- None – 21%

EAST END | LONG MEADOW PARKS

Which site option do you like the best?



- Site option 1 – 53%
- Site option 2 – 30%
- None – 18%



06. FINAL CONCEPT DESIGN

SOUTHEAST RALEIGH YMCA & ELEMENTARY SCHOOL RALEIGH, NORTH CAROLINA

EAST END & LONG MEADOW PARKS PREFERRED OVERALL SITE PLAN

- UNITES EAST END & LONG MEADOW PARKS INTO A CONTINUOUS CIVIC RECREATION SPACE
- PROPOSES ENHANCED CONNECTIVITY & NEW RECREATION ELEMENTS
- PROVIDES FOR FUTURE AQUATICS AREA



EAST END & LONG MEADOW PARKS PREFERRED SITE PLAN - NORTH







HILLSIDE STADIUM SEATING

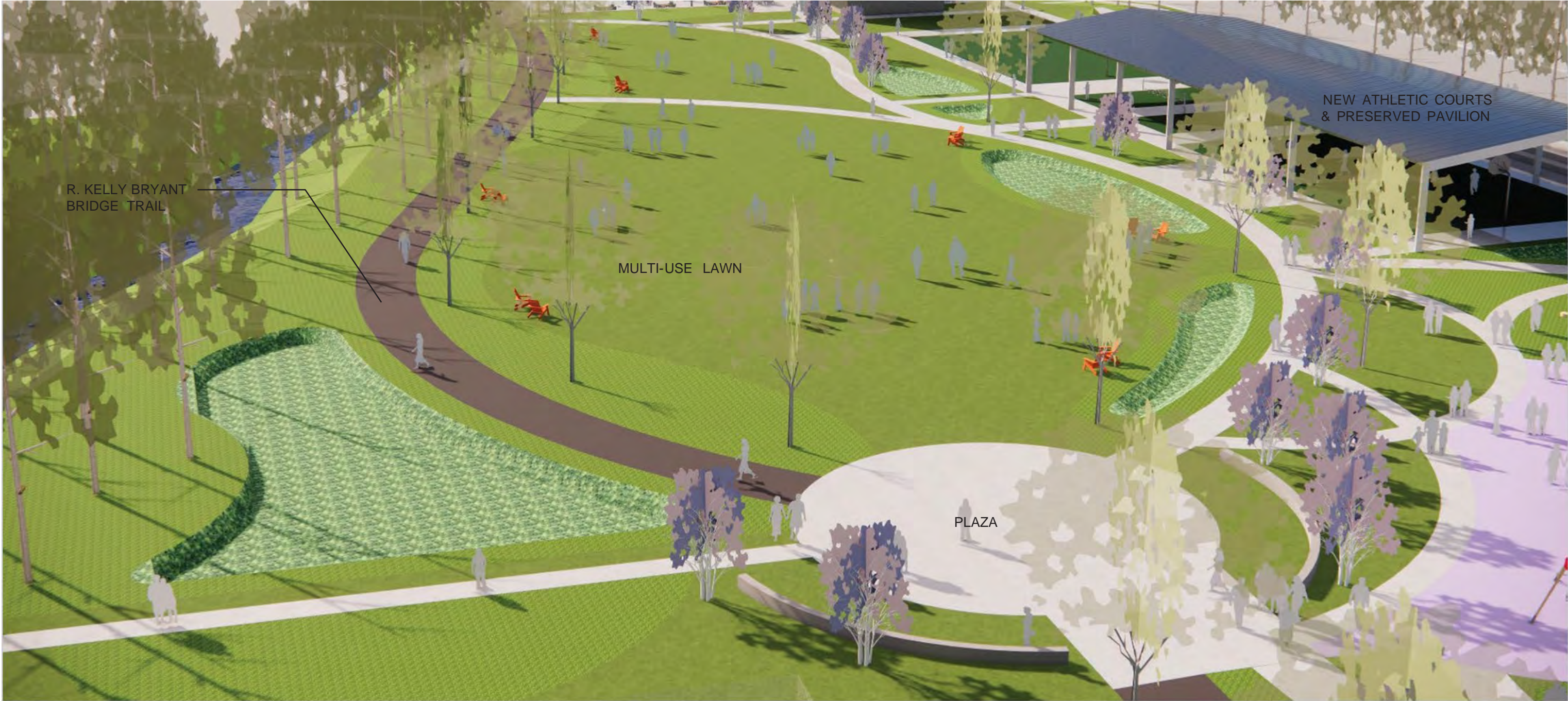
EXISTING CANOPY STRUCTURE

NEW ATHLETIC COURTS

N ALSTON AVE

EXISTING CANOPY STRUCTURE





EAST END & LONG MEADOW PARKS PREFERRED SITE PLAN - SOUTH



- LEGEND
- 1 Existing Court to Remain
 - 2 Parking
 - 3 Lap & Zero-Entry Pools
 - 4 Poolhouse
 - 5 Historic Pavilion to Remain
 - 6 Picnic Area
 - 7 Pedestrian Bridge
 - 8 Enhanced Pedestrian Crossing
 - 9 Sloped Play Area
 - 10 New Courts under Existing Pavilion
 - 11 Climbing Tower
 - 12 Stadium Seating built into Slope
 - 13 Entry Plaza w/ Ping Pong Tables
 - 14 Cultural Arts Center
 - 15 Multi-Purpose Lawn
 - 16 Interactive Water Feature Plaza
 - 17 Storytelling Terrace w/ Fire Pit
 - 18 Fitness Trail Station
 - 19 Interactive Game Terrace
 - 20 Sloped Zip line
 - 21 Terraced Seat walls
 - 22 Play Area
 - 23 Stream Access
 - 24 Existing Ball Fields to Remain
 - 25 Stormwater treatment



FORMER WHEELS FUN PARK PREFERRED SITE PLAN



**FORMER WHEELS FUN PARK
PREFERRED SITE PLAN - NORTH**



- LEGEND**
- 1 Poolhouse
 - 2 Toddler Pool
 - 3 Zero-entry to recreational pool
 - 4 Aquatic playground
 - 5 Water slides
 - 6 Lazy river
 - 7 Vortex seating area
 - 8 Shade structures
 - 9 6-lane 25yd Pool
 - 10 Retractable obstacle course
 - 11 Water volleyball court
 - 12 Deep pool area (can include slides, rock wall, diving board, other)
 - 13 Event pavilion
 - 14 Event lawn
 - 15 Playground
 - 16 Sp rayground
 - 17 Table sports
 - 18 Rest room + Concessions
 - 19 Seating Terrace
 - 20 Enhanced pedestrian crossing
 - 21 Overflow parking
 - 22 Parking
 - 23 Stormwater treatment
 - 24 Drop-off + Public transit stop
 - 25 Maintenance building
 - 26 Access to Muldee St
 - 27 Skating rink
 - 28 Public sidewalk
 - 29 Pool Deck

FORMER WHEELS FUN PARK PREFERRED SITE PLAN - SOUTH



- LEGEND**
- 1 Poolhouse
 - 2 Toddler Pool
 - 3 Zero-entry to recreational pool
 - 4 Aquatic playground
 - 5 Water slides
 - 6 Lazy river
 - 7 Vortex seating area
 - 8 Shade structures
 - 9 6-lane 25yd Pool
 - 10 Retractable obstacle course
 - 11 Water volleyball court
 - 12 Deep pool area (can include slides, rock wall, diving board, other)
 - 13 Event pavilion
 - 14 Event lawn
 - 15 Playground
 - 16 Sprayground
 - 17 Table sports
 - 18 Restroom + Concessions
 - 19 Seating Terrace
 - 20 Enhanced pedestrian crossing
 - 21 Overflow parking
 - 22 Parking
 - 23 Stormwater treatment
 - 24 Drop-off + Public transit stop
 - 25 Maintenance building
 - 26 Access to Muldee St
 - 27 Skating rink
 - 28 Public sidewalk
 - 29 Pool Deck







FORMER WHEELS FUN PARK

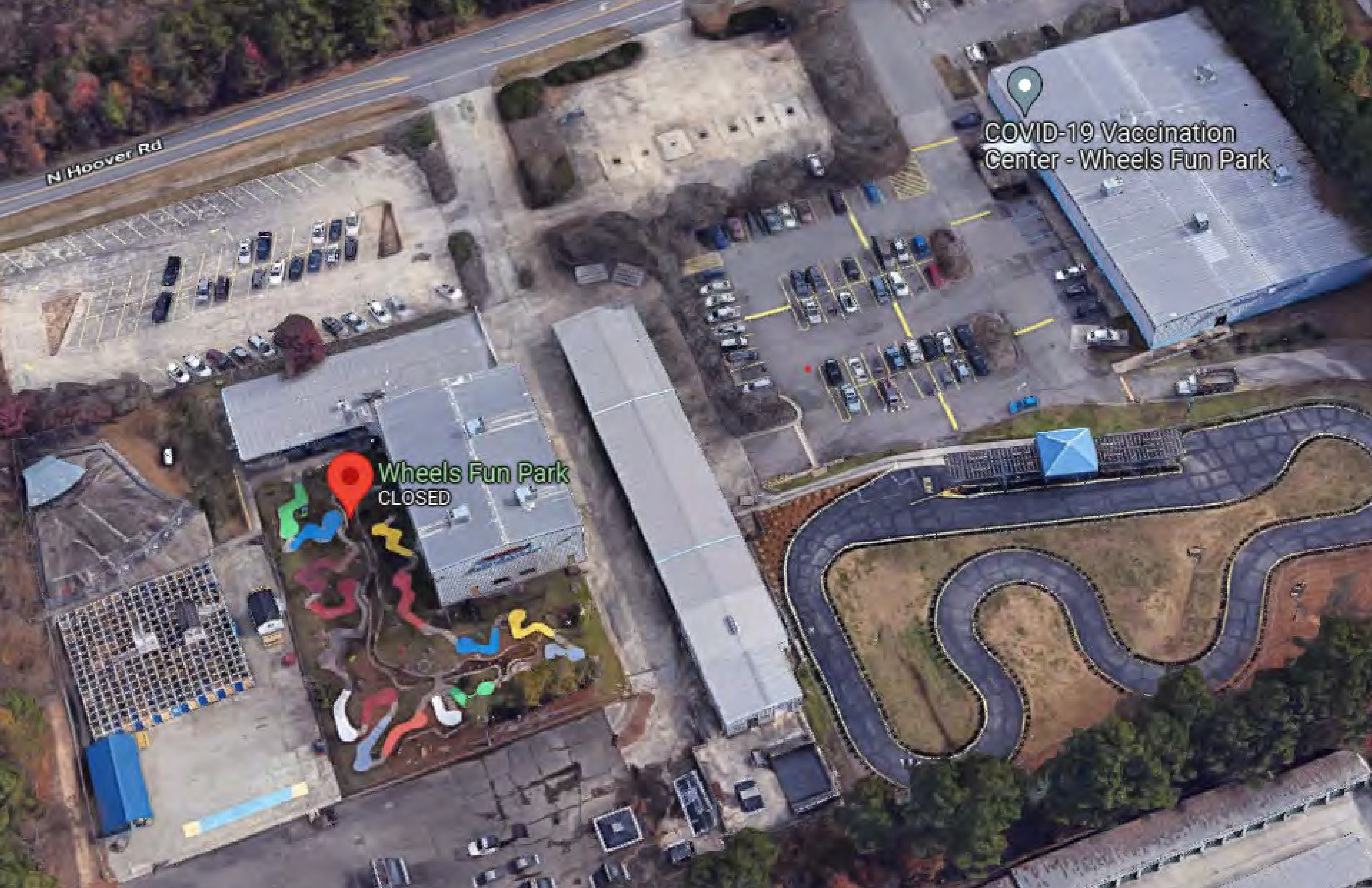
- PRESERVES WHEELS FUN INDOOR SKATING RINK
- PROVIDES LARGE OUTDOOR AQUATIC CENTER
- PROPOSES FREE, YEARROUND RECREATION OPPORTUNITIES IN NEW CIVIC SPACE



N Hoover Rd

COVID-19 Vaccination
Center - Wheels Fun Park

Wheels Fun Park
CLOSED











PLAYGROUND

EVENT LAWN & STAGE PAVILION

NEW RESTROOM BUILDING

PEDESTRIAN PROMENADE W/ TABLE GAMES

SPRAYGROUND

ENHANCED PEDESTRIAN CROSSING TO INDOOR SKATING RINK

COST OPINION SUMMARY

East End | Long Meadow Parks

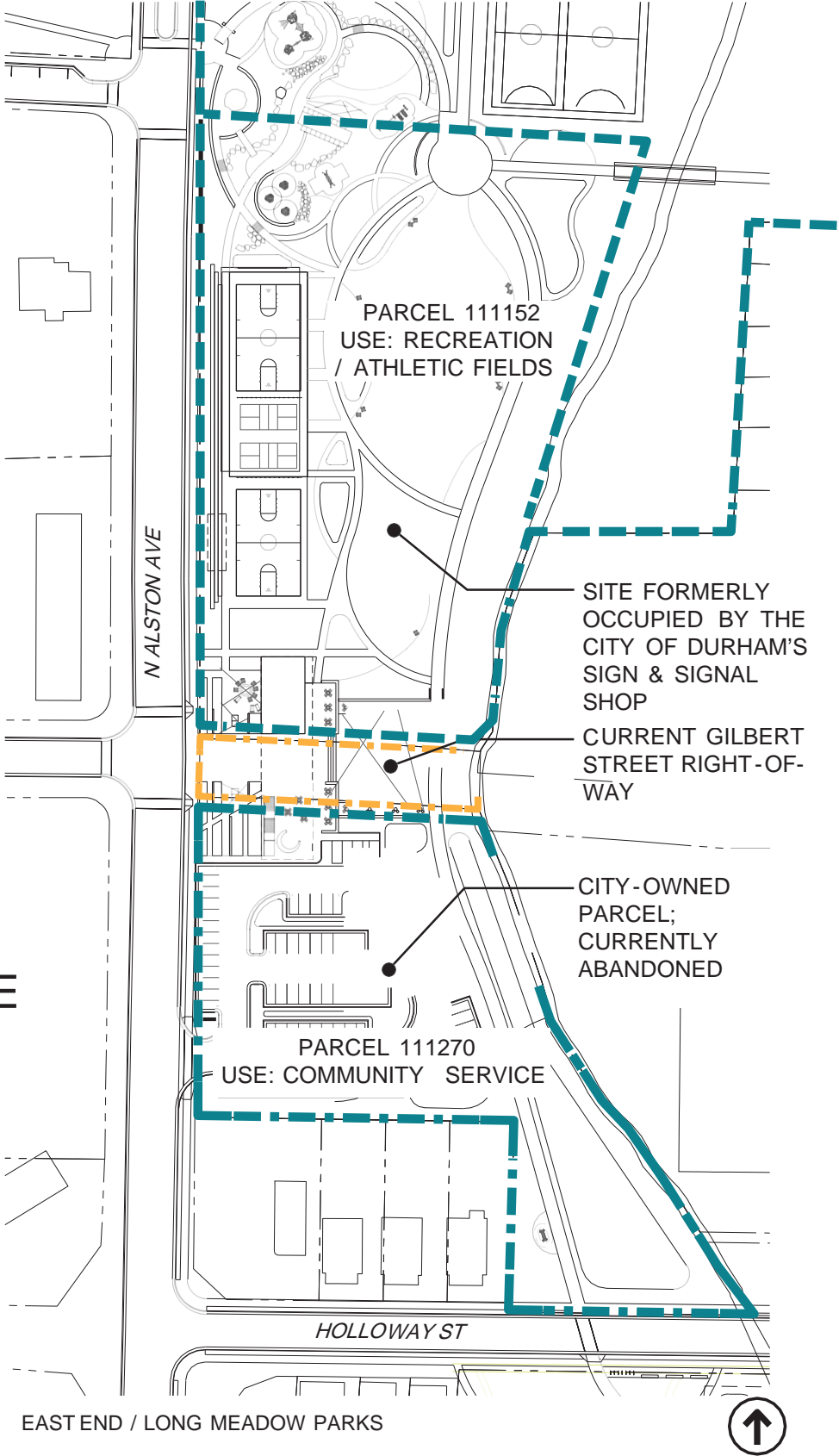
Construction Costs	\$34,000,000
Design Fees	\$5,500,000
Owner Soft Costs	\$300,000
TOTAL	\$39,800,000

Former Wheels Fun Park

Construction Costs	\$35,000,000
Design Fees	\$5,600,000
Owner Soft Costs	\$400,000
TOTAL	\$41,000,000

NEXT STEPS

- PARCEL DEDICATION
- ABANDON R.O.W AT GILBERT ST
- PROCURE SURVEYS
- COORDINATE W/ R. KELLY BRYANT BRIDGE TRAIL CONSTRUCTION



CITY OF DURHAM SPLASH & PLAY PROJECT

