



GENERAL SERVICES

CITY OF DURHAM

R. Kelly Bryant Bridge Trail & Third Fork Creek Phase 2 Trail

Alignment Selection & Community Engagement Recap

February 6, 2020

Presentation Outline

Jessica Kemp, General Services Department
Sr. Construction Project Manager

What is a trail?

R. Kelly Bryant Bridge Trail

Project overview

Alignment Opportunities & Final Selections

Third Fork Creek Phase 2 Trail

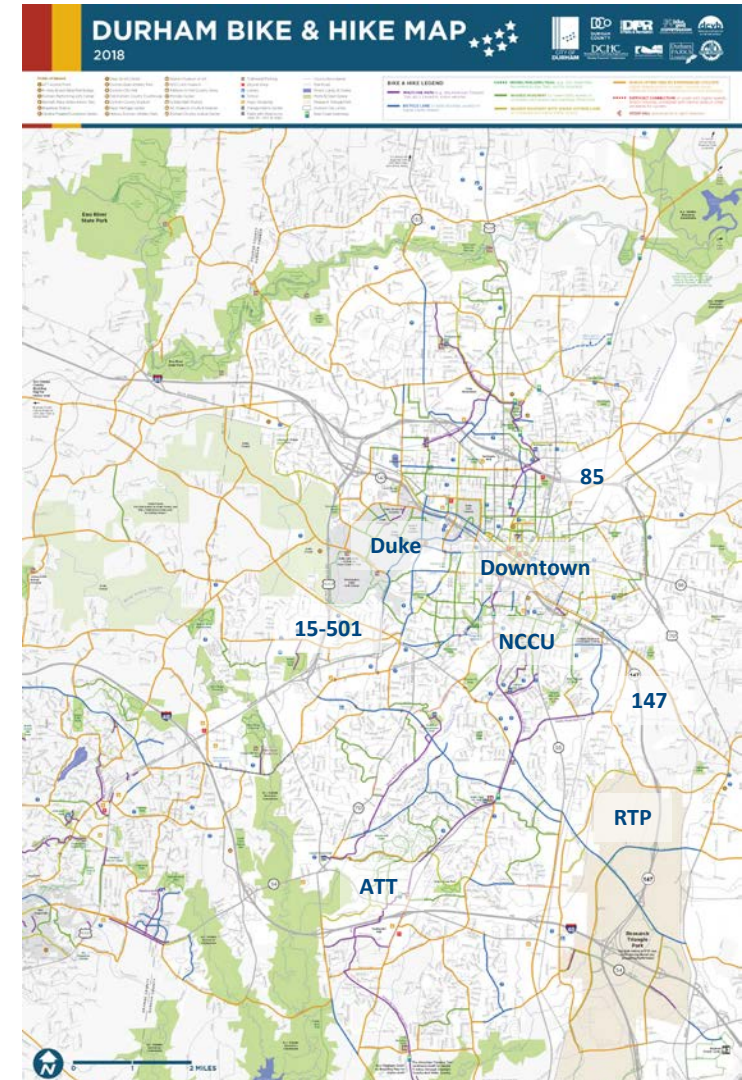
Project overview

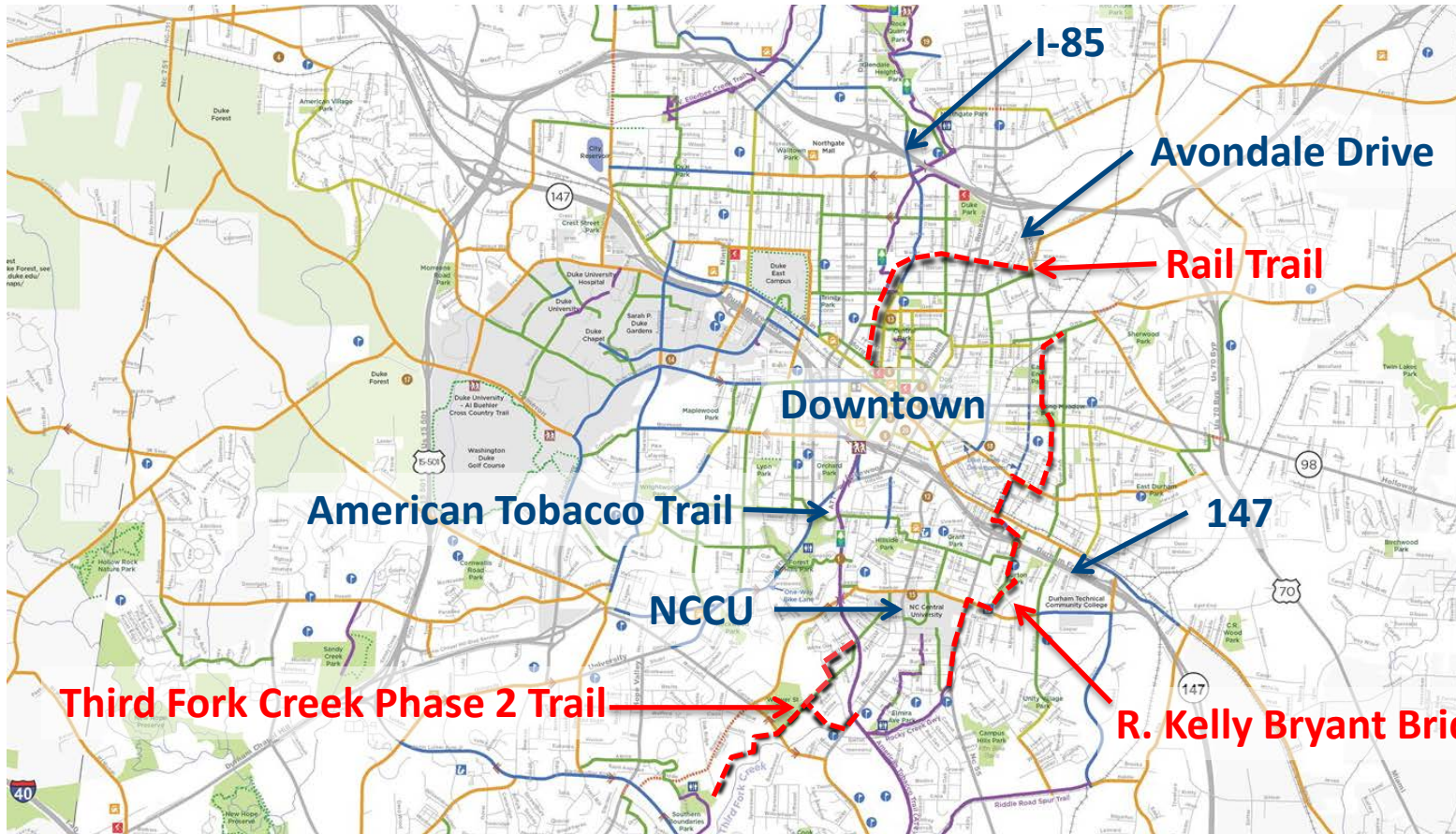
Alignment Opportunities & Final Selections

Nia Rodgers, General Services Department
Sr. Construction Project Manager

Equitable Engagement Results

Next Steps





GENERAL SERVICES
CITY OF DURHAM

919.560.4197

DurhamNC.gov

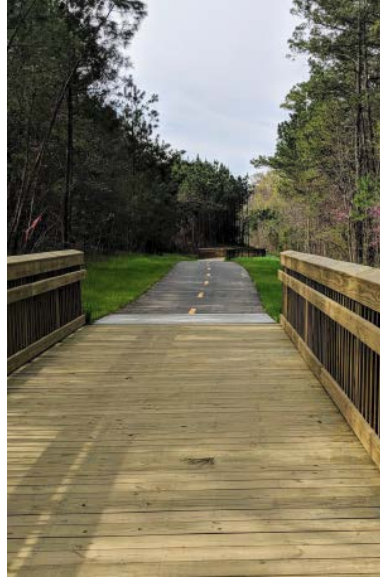
Follow Us @CityofDurhamNC



WHAT IS A TRAIL?



Paved Trail



Boardwalk Trail



Roadside Trail with or without bike lane



Bike Boulevard with Sidewalk

Project Overview

R. Kelly Bryant Bridge Trail

Trail Destination

3 miles aligned north/south

Start Rocky Creek Trail just south of NCCU

Across the “blue” R Kelly Bryant Hwy 147 bridge

End Drew/Granby Park in East Durham

Funding

\$3.99M 80% Federal Transportation Alternative Grant

\$1.42M 20% City CIP (\$367k over grant requirement)

\$5.41M TOTAL

Schedule

June 2019 – Oct 2022 Design, Permitting, Land Acquisition

Dec 2022 – March 2023 Bidding and contract approvals

April 2023 – Aug 2024 Substantial Completion



Alignment Selection

R. Kelly Bryant Bridge Trail

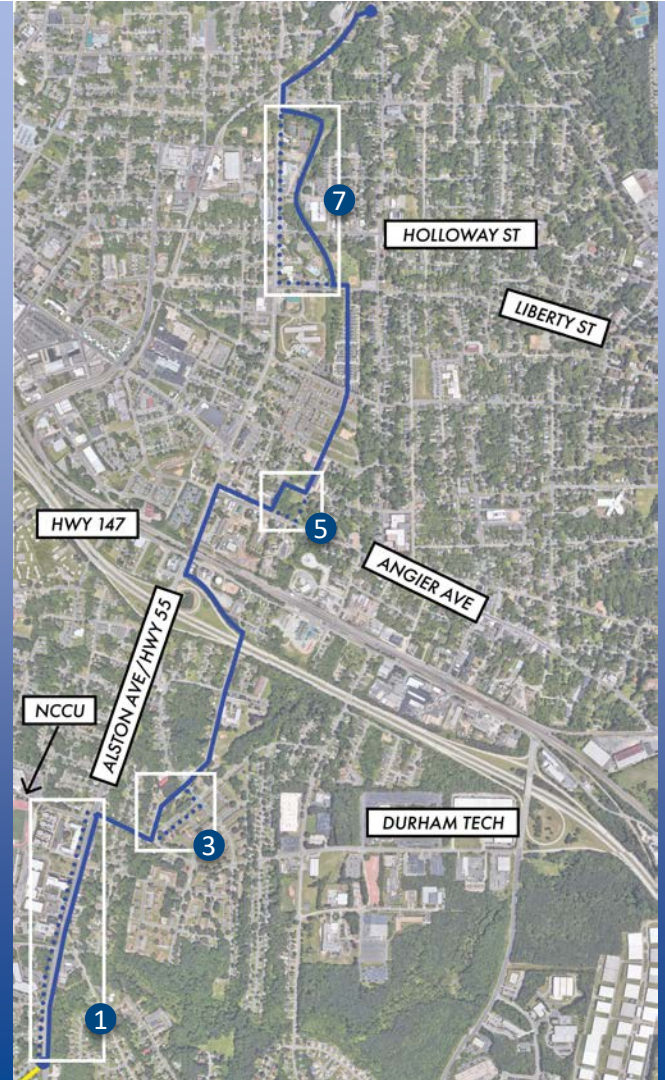
Four Decision Points:

Segment 1 – NC-55 between Dakota St. and Lawson St.

Segment 3 – Between E. Lawson St. and Ridgeway Ave.

Segment 5 – Between Angier Ave. and E. Main St.

Segment 7 – Between Liberty St. and N. Alston Ave.



Alignment Selection

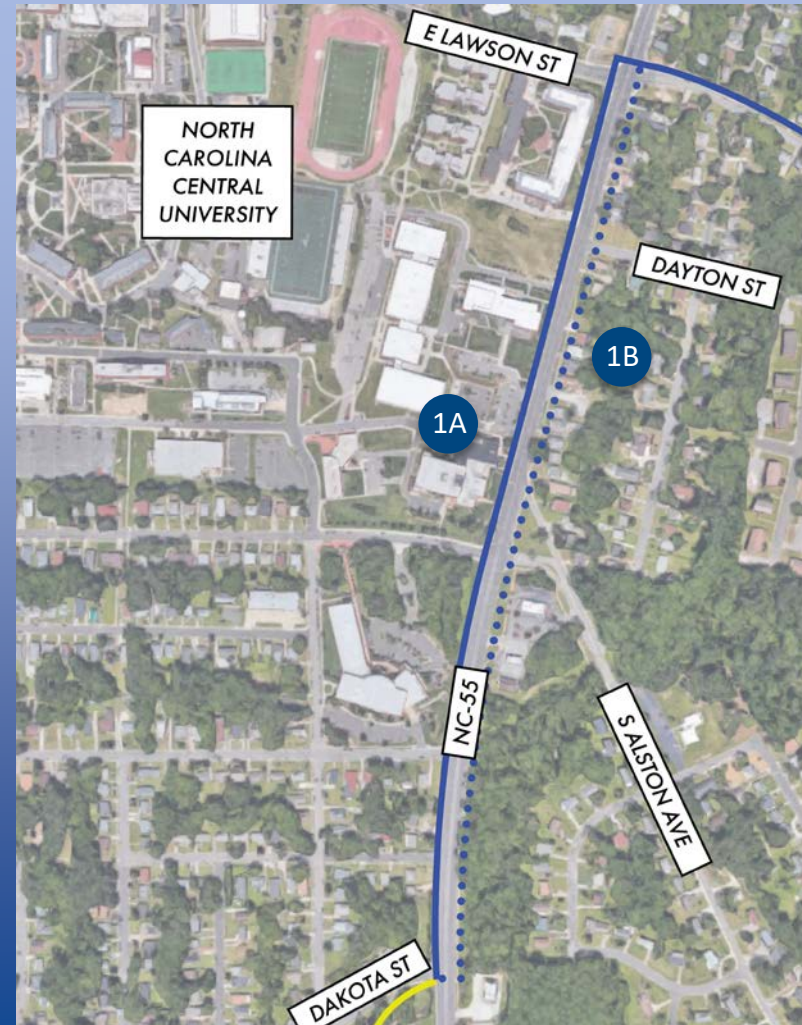
R. Kelly Bryant Bridge Trail

	1A	1B
Trail type	10' concrete sidewalk	10' concrete sidewalk
Perm/Temp Easements	4/4, State Prop Office	21/23
Estimated cost	\$1M	\$989K

RECOMMENDATION



GENERAL SERVICES
CITY OF DURHAM



Alignment Selection

R. Kelly Bryant Bridge Trail

	3A	3B
Trail type	10' concrete sidewalk	10' concrete sidewalk
Land acquisition	Paper street closure: Lakeland St	No
Perm/Temp Easements	5/5	1/1
Site Plan	Yes, Burton Park	No
Estimated cost	\$188,000	\$191,000
Engagement Outcome	Preferred	Less preferred

RECOMMENDATION



Alignment Selection

R. Kelly Bryant Bridge Trail

	5A	5B
Trail type	8-10' concrete sidewalk	8-10' concrete sidewalk
Perm/Temp Easements	7/7, 1 land owner	7/7, 1 land owner
Estimated cost	\$171,000	\$121,000
Engagement Outcome	Preferred	Less preferred

RECOMMENDATION



Alignment Selection

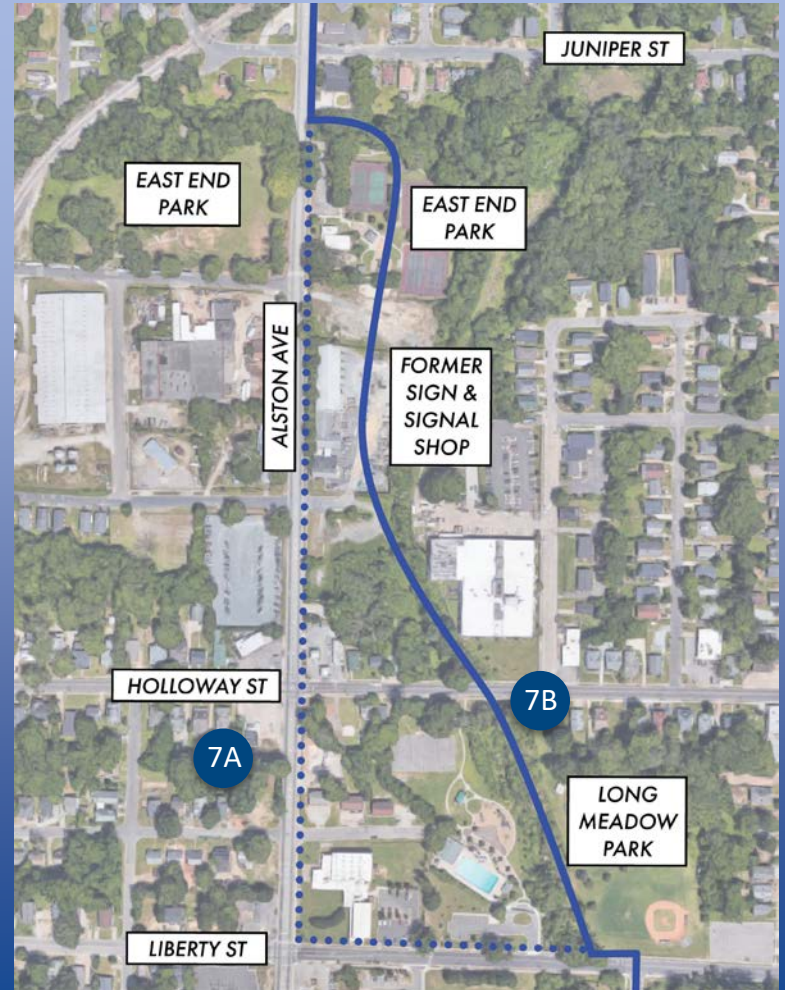
R. Kelly Bryant Bridge Trail

	7A	7B
Trail type	10' concrete sidewalk	10' asphalt path & boardwalk
Perm/Temp Easements	8/8	3/3
Estimated cost	\$727,000	\$853,000
Anticipated additional costs	None	Safety features: City parcels, Crossing at Holloway St, Potential stream stabilization
Engagement Outcome	Less preferred	Preferred

RECOMMENDATION



GENERAL SERVICES
CITY OF DURHAM



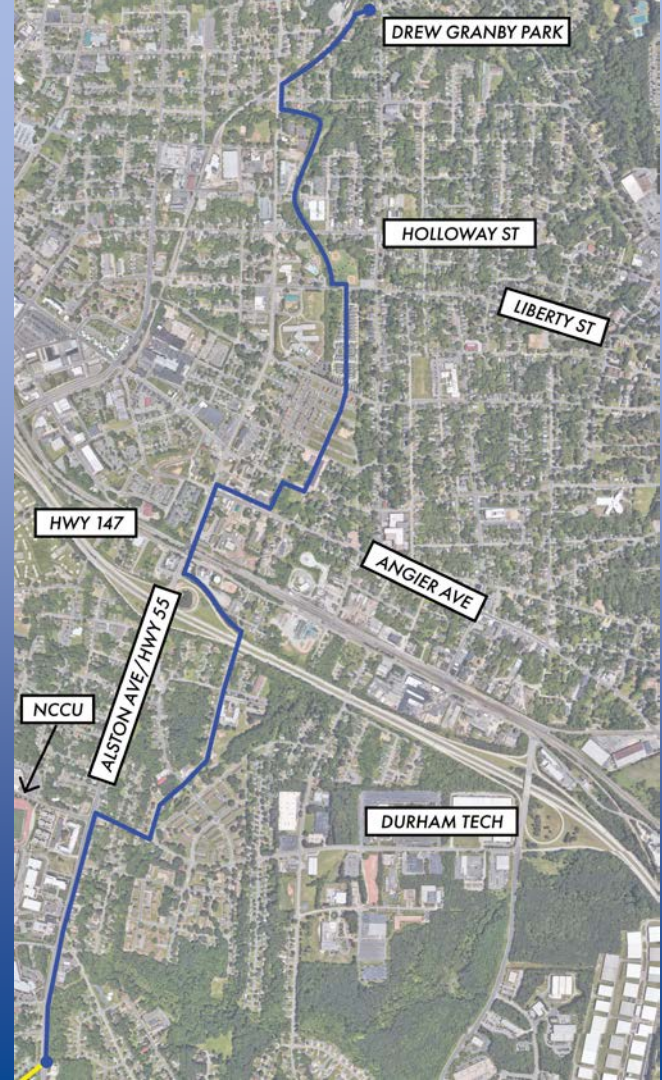
Alignment Selection

R. Kelly Bryant Bridge Trail

Final Recommended Alignment

Necessary Approvals:

- Design amendment
- Estimated 40 private easements needed
- No additional City fund request anticipated



Project Overview

Third Fork Creek Phase 2 Trail

Destination

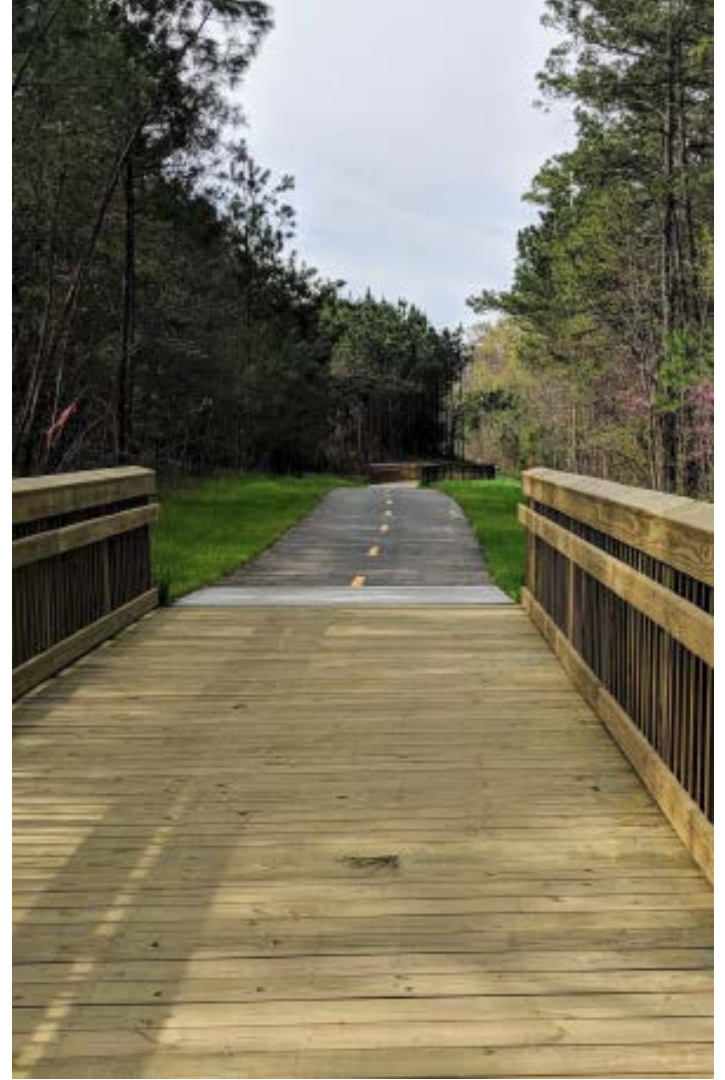
Third Fork Creek Trail extension, 1.7 miles
Start Southern Boundaries Park at Phase 1 trail terminus
Crosses Cornwallis Rd
End American Tobacco Trail at Fayetteville St.

Funding

\$2.85M	80% Federal Transportation Alternative Grant
<u>\$1.17M</u>	20% City CIP (\$437k over grant requirement)
\$4.46M	TOTAL

Schedule

June 2019 – Aug 2022	Design, Permitting, Land Acquisition
Oct 2022 – Jan 2023	Bidding and contract approvals
Feb 2023 – Feb 2024	Substantial Completion



Alignment Selection

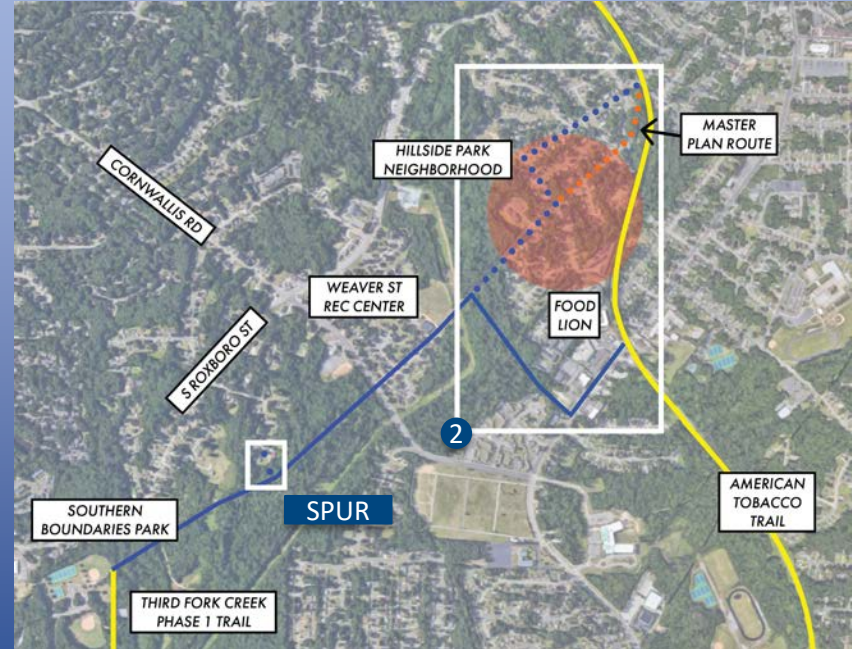
Third Fork Creek Phase 2 Trail

2011 Trails Master Plan alignment

Two Alternative Decision Points:

Segment 2 – Weaver St. to American Tobacco Trail

Spur connection – Between trail and Barnhill St.

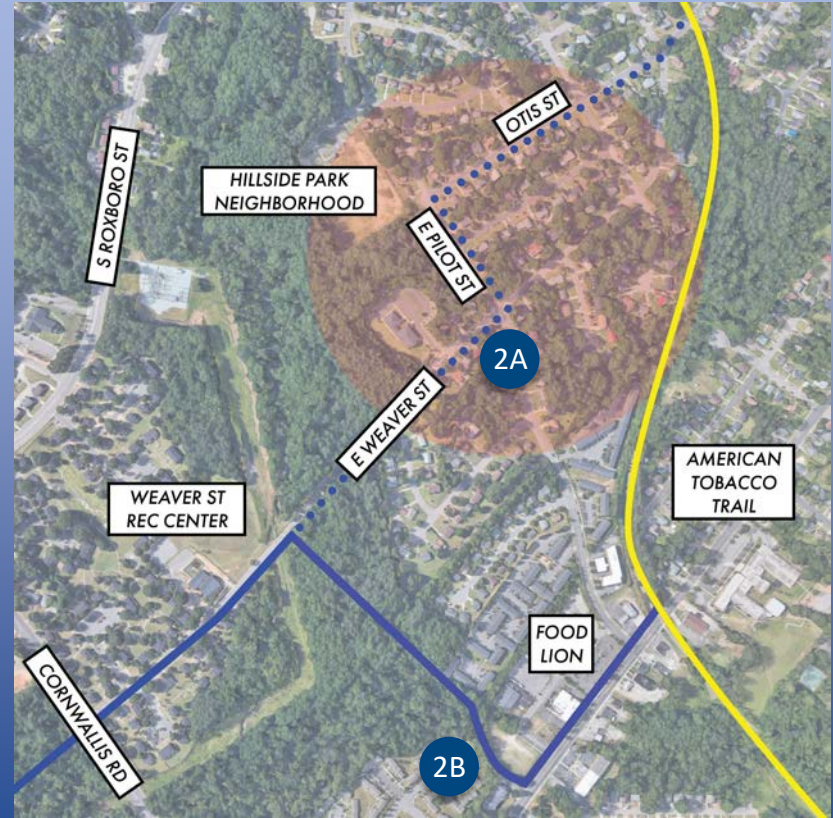


Alignment Selection

Third Fork Creek Trail Phase 2

	2A	2B
Trail type	5' concrete sidewalk Bike pavement marking	10' asphalt path & boardwalk
Estimated cost	\$1.1M	\$2.3M
Anticipated additional costs	None	Safety Improvements: Fayetteville at ATT
Engagement outcome	Less preferred	Preferred

RECOMMENDATION



Alignment Selection

Third Fork Creek Trail Phase 2

Barnhill spur connection:
Not supported by residents
Staff recommends eliminating



Alignment Selection

Third Fork Creek Trail Phase 2

Final Recommended Alignment

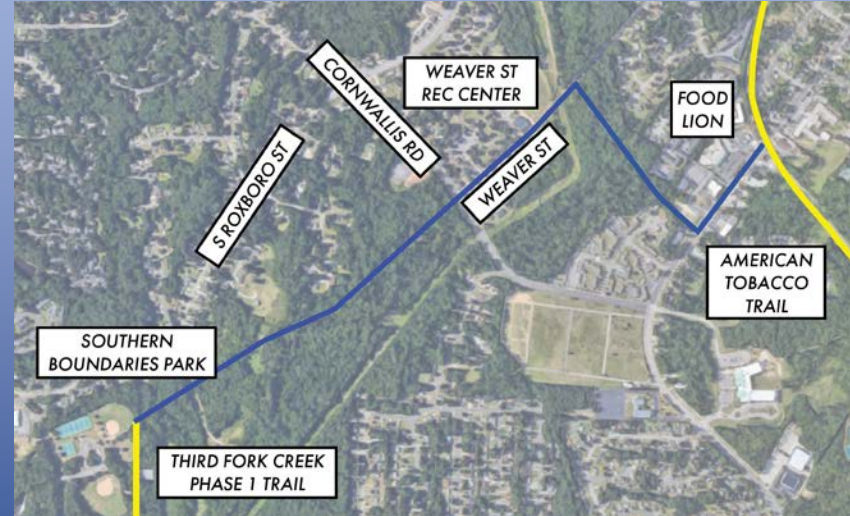
Necessary Approvals:

Design amendment

Estimated 18 private easements needed

Additional Federal funds needed \$1.8M

No additional City fund request anticipated



Fall 2019 Community Engagement & Outreach

Goals

- Reach historically underrepresented communities most likely to be impacted by the projects
- Gather feedback on alignment options presented
- Provide transparency
- Document and report back
- Coordinate multiple City departments



Equitable Community Engagement Blueprint

Introduction

The Neighborhood Improvement Services Department (NIS) works to preserve and improve quality of life conditions for Durham residents, and to encourage active participation in neighborhood redevelopment and public policy and decision making dialogue. The Community Engagement Team strives to inform, engage, partner and empower the Durham community.

The City has not executed a standardized process for conducting community engagement that is shared or adopted by all Departments. Furthermore, the City has not developed an equitable community engagement process that ensures that its outreach or information-gathering approaches include an intentional effort to engage a representation of the City's diversity. The Community Engagement Team of NIS, to match the goal of encouraging active participation in neighborhood redevelopment and public policy and decision making dialogue, has created an Equitable Community Engagement Blueprint through conversation with other departments and community leaders.

Background

The City of Durham strives to be a welcoming, diverse and innovative community. Equity and resident engagement are key components of the City's FY2019-2021 Strategic Plan, includes Advance a More Inclusive and Equitable Durham, Shared Economic Prosperity, and the Language Access Plan.

*"Many current inequities are sustained by historical legacies and structures and systems that repeat patterns of exclusion. Institutions and structures have continued to create and perpetuate inequities, despite the lack of explicit intention. Without intentional intervention, institutions and structures will continue to perpetuate racial inequities. Government has the ability to implement policy change at multiple levels and across multiple sectors to drive larger systemic change. Routine use of a racial equity tool explicitly integrates racial equity into governmental operations."
(Government Alliance on Race & Equity, 2018)*

In order to create strategies for equity to achieve the City's vision of an excellent and sustainable quality of life for all residents, the City must engage the community in an equitable way.



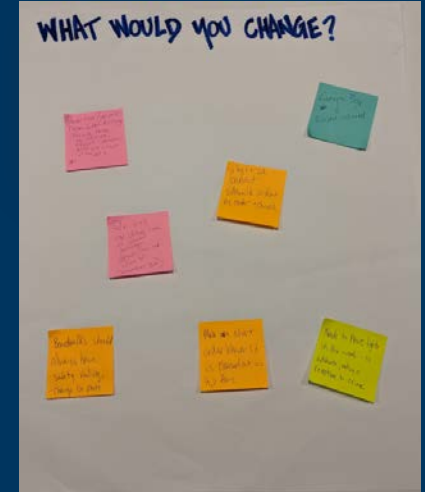
Fall 2019 Community Engagement & Outreach

Impacts

Relationship Building

Flexibility & Accessibility

- Variety of meeting formats
 - Canvassing
 - Community meetings
 - Locations and activities identified by community where possible
 - Kids activities & snacks
 - Spanish language translation
- Written, graphic and web materials
- Project and technical education



GENERAL SERVICES

CITY OF DURHAM

Fall 2019 Community Engagement & Outreach

R. Kelly Bryant Bridge Trail


Initial outreach:

- August – November 2019
- 438 contacts (email, canvassing, community events)
- 117 online survey responses
- 8 face-to-face conversations

Top public concern:

Safety in parks

R. KELLY BRYANT BRIDGE TRAIL
Segmento 7



¡Noticias emocionantes! ¡Estamos construyendo un nuevo sendero en su área!
Para asegurarnos de que este sendero esté construido de la mejor manera posible, ¡nos gustaría tener TUS pensamientos!
Hay dos opciones para el segmento 7, uno a lo largo de la avenida Alston, y el otro pasando por Long Meadow Park. La ruta completa se conectará a:

- Parque Drew Granby
- Parque Long Meadow
- NCCU
- Escuela Burton
- Parque East End
- Eastway Village
- Puente R. Kelly Bryant

Proyect contact: Jessica Kemp
(919) 560-4197 • 20234
o por correo electrónico a
jessica.kemp@durhamnc.gov

Site Web
<https://durhamnc.gov/3085/R.Kelly-Bryant-Bridge-Trail>
Encuesta
<https://www.surveymonkey.com/r/RKSBing?>

GENERAL SERVICES
CITY OF DURHAM
NOVEMBER 21, 2019

Fall 2019 Community Engagement & Outreach

Third Fork Creek Phase 2 Trail

Fall outreach:

- August – November 2019
- 233 contacts
- 47 online survey responses
- 62 face-to-face conversations (includes 3 project specific community meetings)
- 7 emails/phone calls from residents

Top public concerns:

Safety around Cornwallis Rd Housing Authority, in woods, and ATT at Fayetteville St

Other Issues

TRAIL DESIGN FEEDBACK SUMMARY
YOU SPOKE, WE LISTENED
From the Summer to the Fall of 2019 we received valuable input from YOU!
This is an overview of your feedback and our response

WE HEARD: No trail in our neighborhood	WE DID: • Added trail route option 2B • Route through the woods south of Village Park, and along Fayetteville St.
WE HEARD: No trail in Waverre where the American Tobacco Trail is in the backyard	WE DID: • Revised the original Waverre St. to Chis St. route through Pilot St. See Option 2A below.
WE HEARD: Build the trail to the west along the creek towards lower hills.	WE DID: • Federal funding for the current project requires connection to the American Tobacco Trail (ATT) • There is not a practical way to connect to the ATT this far west without increasing resident impacts. • Additional engineering analysis revealed many constraints (steep topography, flood plain, protected stream buffers) and increased the length of the project.
WE HEARD: Reduce impacts to trees and yards.	WE DID: If Option 2A is chosen • Realign on the road, narrow sidewalk • Moved portion of route from Waverre St. to Pilot and Chis St. and adjusted which side of the road sidewalk is on to minimize tree and yard impacts.
WE HEARD: The trail planning committee did not have residents from our neighborhood.	WE DID: • Use green board locations on the signs on the sign-in desk.
WE HEARD: Concern about safety	WE DID: If Option 2B is chosen • The engineering team did incorporate safety improvements recommended by the 2015 ATT study and Crime Prevention Through Environmental Design standards. See additional information on signs in desk.

Additionally, we heard concerns about tree planting, street lighting, street lighting, and crime. We have contacted the departments that manage those issues.
Please visit the sign-in desk for a summary, contacts, and additional information.



Community Engagement Survey Reports

Posted December 2019

- Brief Project Introductions
- Activity List
- Summary of Responses by residents in each project neighborhood
- Conclusions include trail preference and future outreach recommendations
- Full web survey results as appendix

GENERAL SERVICES
CITY OF DURHAM

OVERVIEW SUMMARY FOR EQUITABLE COMMUNITY ENGAGEMENT WITH THE RESIDENTS OF SEGMENT 3 OF THE R. KELLY BRYANT BRIDGE TRAIL PROJECT AREA
December 17th, 2019

This document showcases responses from the residents of segment 3 of the R. Kelly Bryant Bridge trail corridor. Full web responses can be found in Appendix B.

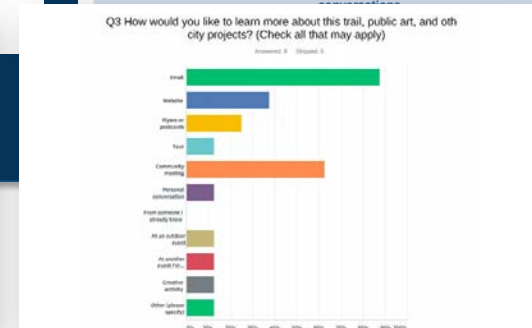
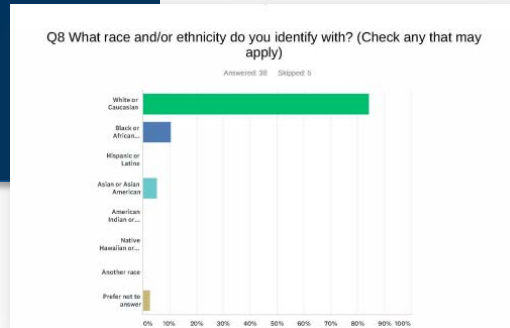
Overview
R. Kelly Bryant was a long-time civil rights activist and Durham Open Space and Trails Commission member. It was a longtime dream of his to see the neighborhoods north and south of 147 reunited after the construction of the highway broke them apart. The R. Kelly Bryant Bridge trail hopes to be a part of that reunification and honor Mr. Bryant's memory.

This bicycle and pedestrian trail will be approximately 3 miles long. It will connect the existing Rocky Creek Trail on Dakota Street north to the Drew/Granby Park located on Drew Street in Durham. Due to the length of the trail, it was broken into eight segments and members of the Department of General Services sought community input on two segments of the trail where there could be a potential of two options for route. This report seeks to show the community engagement efforts for segment 3 of the trail and the feedback received from the residents in the area.

Map showing the segment 3 options for the R. Kelly Bryant Bridge Trail

- Option 1A would travel up Lakeland St. from Lawson St. and connect through the woods. It would be a wide sidewalk for bikes and pedestrians on the Burton Park side of the street.

Summary of Outreach & Participation		
Outreach Item	Details	Saturation
Online survey	Created to gather community input on which option of segment 3 would be most preferable	40 surveys taken
Door-to-door canvassing	Knocked on the door of the residents on Lakeland between Burton Park and Lawson St. to discuss the project and hand out flyers. Additionally walked up Lawson St. to Alston Ave., Lakeland St., Sowell St., and Eugene St. to post flyers on resident's doors which contained links to the online survey.	~78 flyers were posted on doors, talked to 2 residents
11/2 McDougald Terrace Health Fair	A health fair and screening event was scheduled in the meeting room. Members of the engagement team set up a table to survey attendees about their thoughts.	2 surveys taken
McDougald Terrace Resident Meeting	Attended the monthly resident meeting to share details about the trail, pass out the survey, and flyers containing survey links to be distributed to residents who did not attend the meeting.	3 surveys collected, 20 flyers passed out
Durham Housing Authority	Contacted DHA to get recommendations on best ways for outreach for the residents of McDougald Terrace. The representative said they had some email contacts and would distribute the survey link to those residents.	Link sent to ~40 residents
NextDoor Post	Post sent to Public Affairs containing online survey link to the residents of the Pettigrew and Lincoln neighborhoods.	3 people saw the post
Burton Elementary School Meeting	Met with representatives of Burton Elementary school to discuss ways to contact the parents of students who attend the school. Burton Elementary is a magnet school and therefore many attendees are not residents of the neighborhood.	1
11/9 PAC 4	Presented trail options at regular Partners Against Crime meeting	17 flyers, no surveys returned
Email notification	Email with website updates and requesting participation in survey sent to residents who requested updates via EngageDurham, HIS neighborhood contact lists, sign-up at other engagements	595
Estimated total: 203 contacts, with 43 submitted survey responses, and 8 face-to-face		



2020 Community Engagement & Outreach

January 2020 – Report back (letters, flyer, email lists, websites)

- Adjacent Schools
- Salvation Army
- Community Engagement Officers
- McDougald Terrace
- Cornwallis Apartments
- Individual residents
- Weaver Street Rec
- Lakeland St
- Hillside Park Neighborhood Association
- Churches & businesses
- Cornwallis Rd. Apartments
- Barnhill St
- Goose Creek Parks With Purpose / ECWA
- DOST
- BPAC
- PACs 1 & 4

January 2020 – Land surveying notification letters mailed

February 2020 – Community Rooted Partners under NIS*

Summer 2020 – Public meetings by design consultant*

**anticipated milestone dates*



Project Websites

Third Fork Creek Phase 2 Trail:

<https://durhamnc.gov/3623/Third-Fork-Creek-Trail--Phase-II>

R. Kelly Bryant Bridge Trail:

<https://durhamnc.gov/3085/R-Kelly-Bryant-Bridge-Trail>

Project Websites and email sign-ups also linked at:

EngageDurham.com

Home » Government » Departments G-Z » General Services » Divisions » Design & Construction Management » Highlighted Construction Projects » Third Fork Creek Trail--Phase II

Third Fork Creek Trail--Phase II

[Jessica Kemp](#), Senior Project Manager

919-560-4197, ext. 21234

Budget

\$2,854,000 Federal grant
\$1,608,000 City of Durham
\$4,462,000 TOTAL budget

Location

[Third Fork Creek Phase II Map](#)

Team Members

[City of Durham Parks & Recreation Dept.](#)
[City of Durham Bike & Pedestrian Div.](#)
[NC Dept. of Transportation](#)

Current Phase

Design

Expected Completion

August 2023

Project Description

This bicycle and pedestrian trail will be approximately 1.7 miles long. It will extend Phase I of the Third Fork Creek Trail that was built in 2009 and currently ends at Southern Boundaries Park. The new Phase II trail identified in the City's Trails and Greenways Master Plan, will extend from Southern Boundaries Park north to the American Tobacco Trail. The new extension will connect users to an existing trail network, surrounding neighborhoods, Weaver Street Recreation Center, Weaver Street Park, Cornwallis Road, and the American Tobacco Trail.

