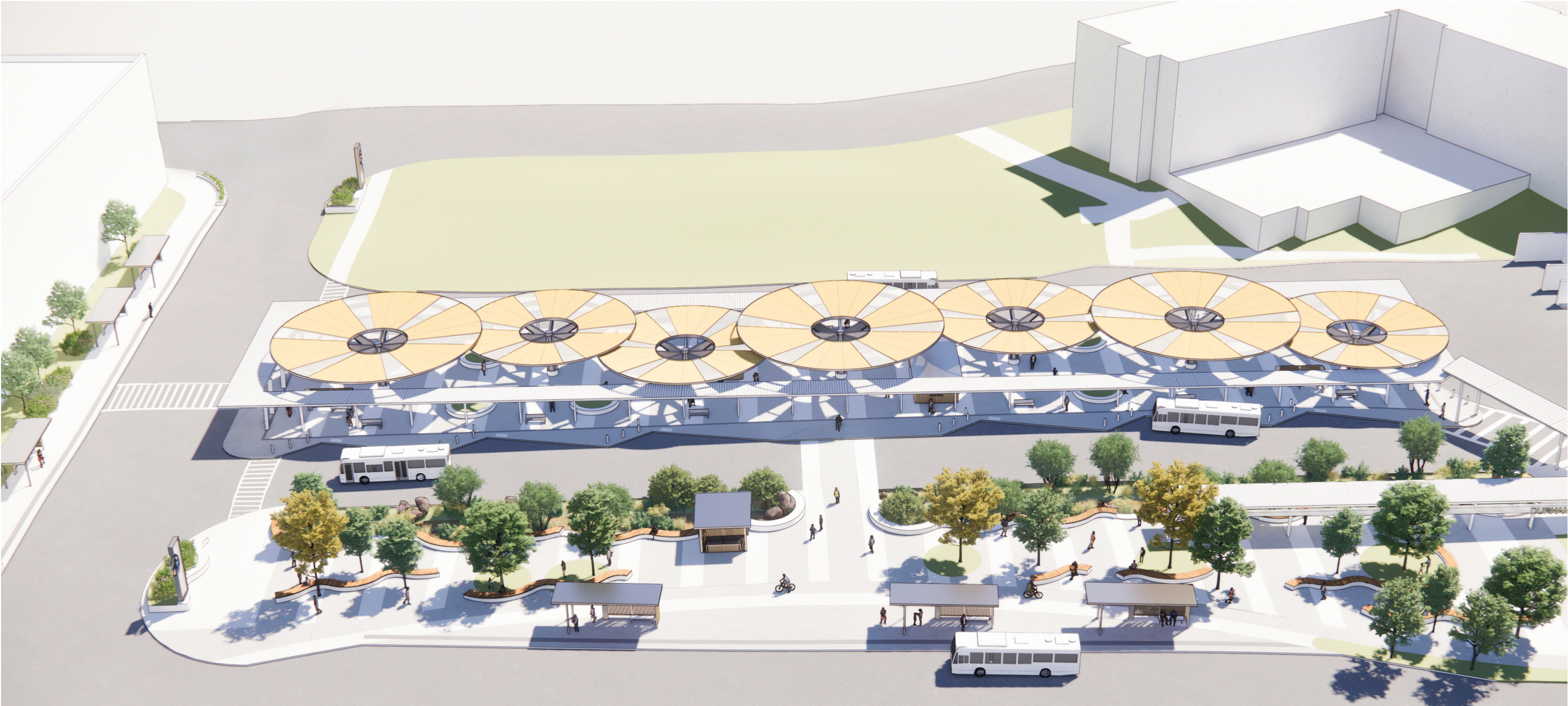


Attachment C

100% Schematic Design - Concept Images



Overall Aerial View from Pettigrew Street

When thought of as a "porch to our city", Durham Station incorporates many elements to meet the varied needs of riders and an overall sense of place.

THE STREET: The street edge is made more pedestrian friendly and inviting by relocating the existing kiss & ride parking from Pettigrew Street to Willard Street. Drop-off from the kiss & ride along Willard Street allows for access to the upper level of the existing station and maintains proximity to the long-distance bus terminal. Relocating the parking allows for additional bus drop-off zones and an enlarged plaza area.

THE PORCH: The enlarged plaza area along Pettigrew Street is approached through a space of gardens and paved pathways. The landscape design incorporates meandering seat walls that provide places for pause within the 'porch' plaza. There is a small bathroom facility for public use and convenience to riders along Pettigrew. A bioretention area separates the plaza from the bus island to manage stormwater and improve rider safety by preventing uncontrolled pedestrian movement across bus lanes. Bioretention areas gently guide pedestrians to the new raised table crosswalk to the main bus island.

THE HOUSE: More expansive shelter, convenience restrooms, additional seating, and a new customer service security kiosk represent the primary additions to the bus island. Bus island elements including canopy columns, windscreens, and planter seat walls create diversity of waiting zones for riders.

The design elements illustrated on the following pages of this report detail the individual elements that form the building blocks of the future Durham Station. Seat walls not only quadruple patron seating, but also encourage meeting and gathering on the 'porch' plaza. Bus shelters, wind screens, service kiosk structures, bus island canopies, and gateway elements materially connect to one another to convey a cohesive identity for Durham Station and its community of users.



Architectural Site Plan

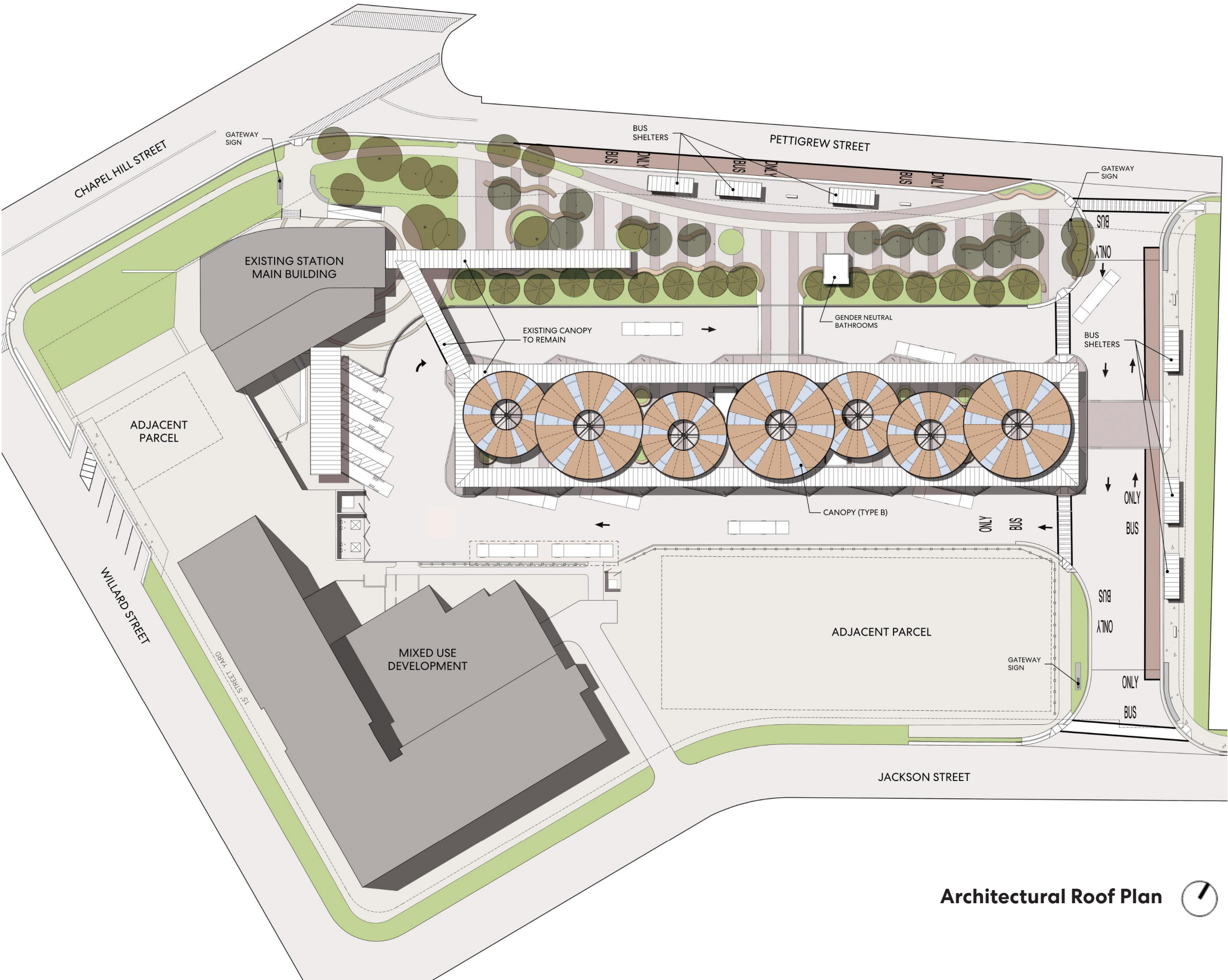


Canopy Design

The new canopy covering the bus island consists of seven 'tree-like' structures providing the desired shelter and protection to riders. The canopies are constructed with steel beams and columns, cross-laminated timber decking, and fritted glass skylights. The canopies are overlapping with varying heights and maintain a central opening to allow for air movement under and through the bus island.

The existing metal canopy surrounding the bus island contrasts in material and provides a frame for the new canopy infill. New canopies are sloped to match the existing with rainwater collected through an integral gutter and downspout that connects to the bioretention area in the plaza.

The materiality, structure, and shape of the canopies share common materials and design characteristics to experientially tie the station together with a cohesive identity.

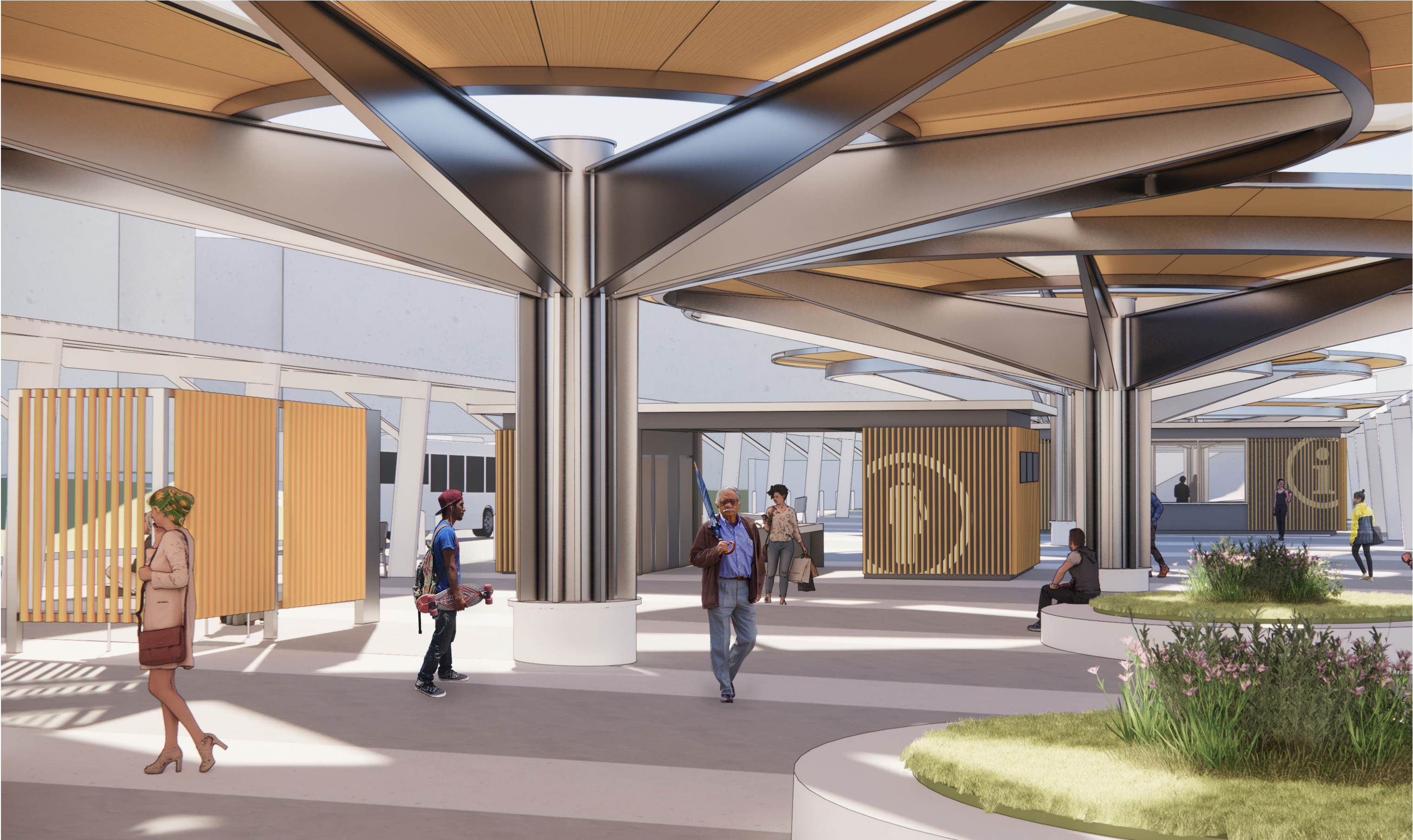


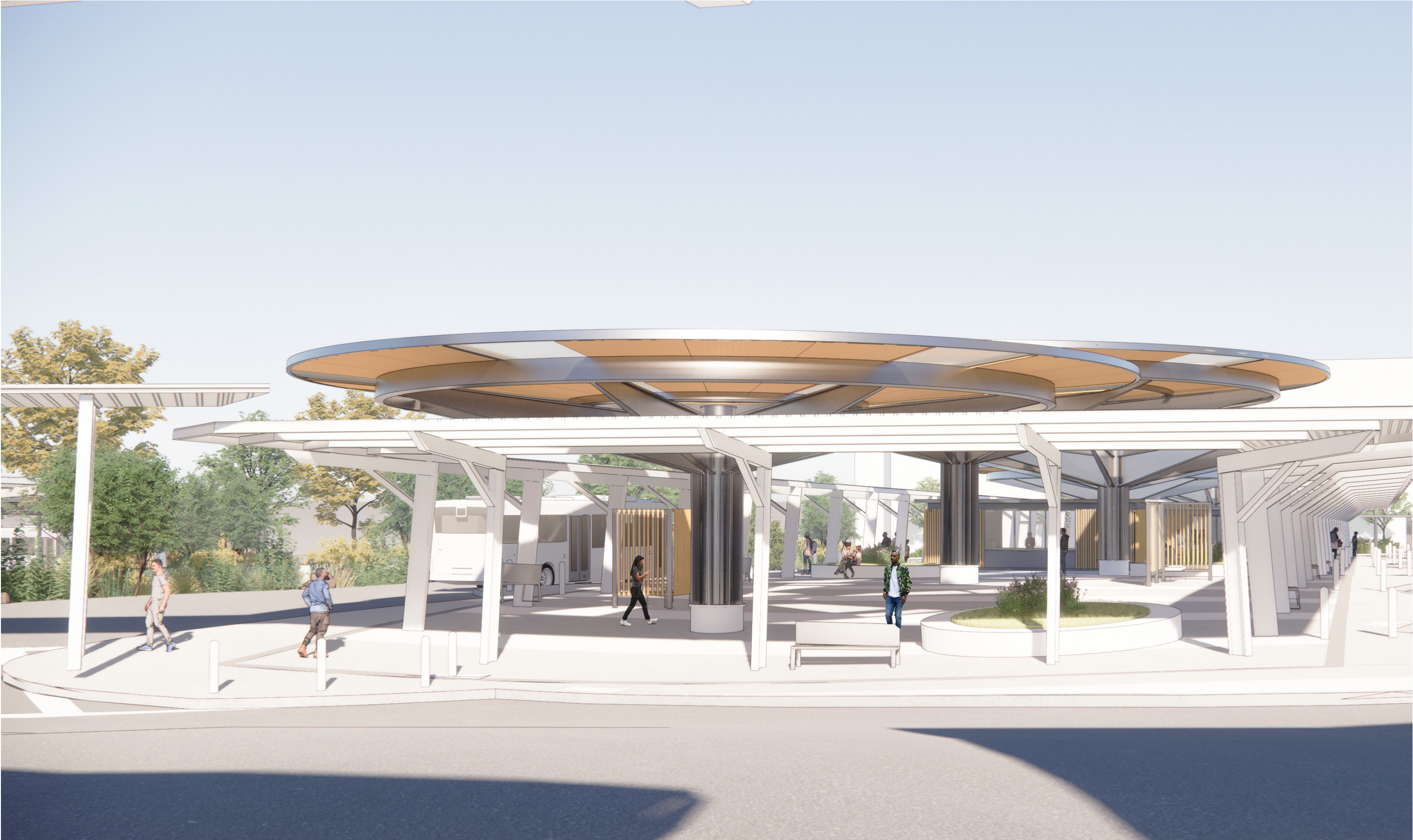
Architectural Roof Plan

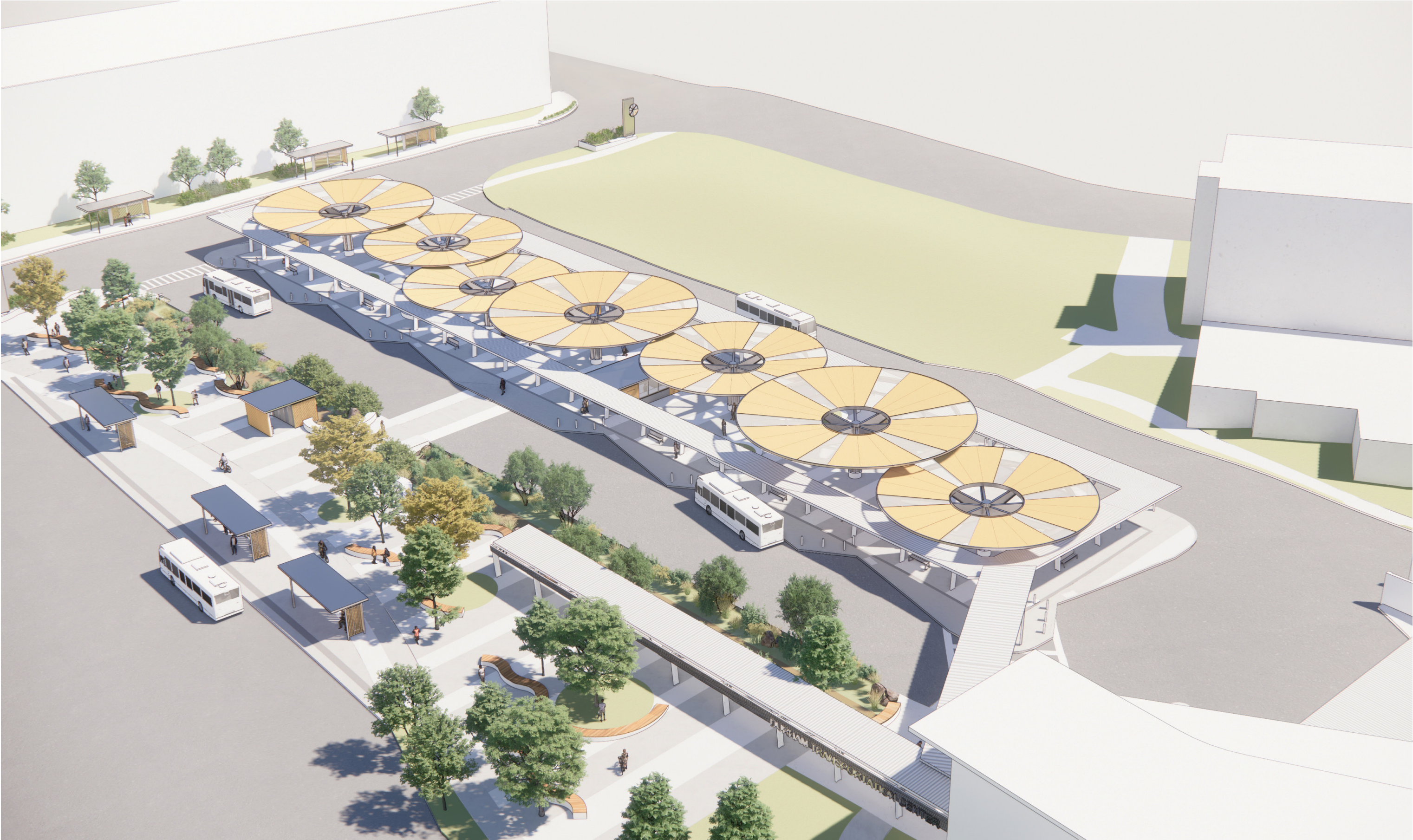














Plaza View along Pettigrew Street, facing West





