



Urban Open Space Plan

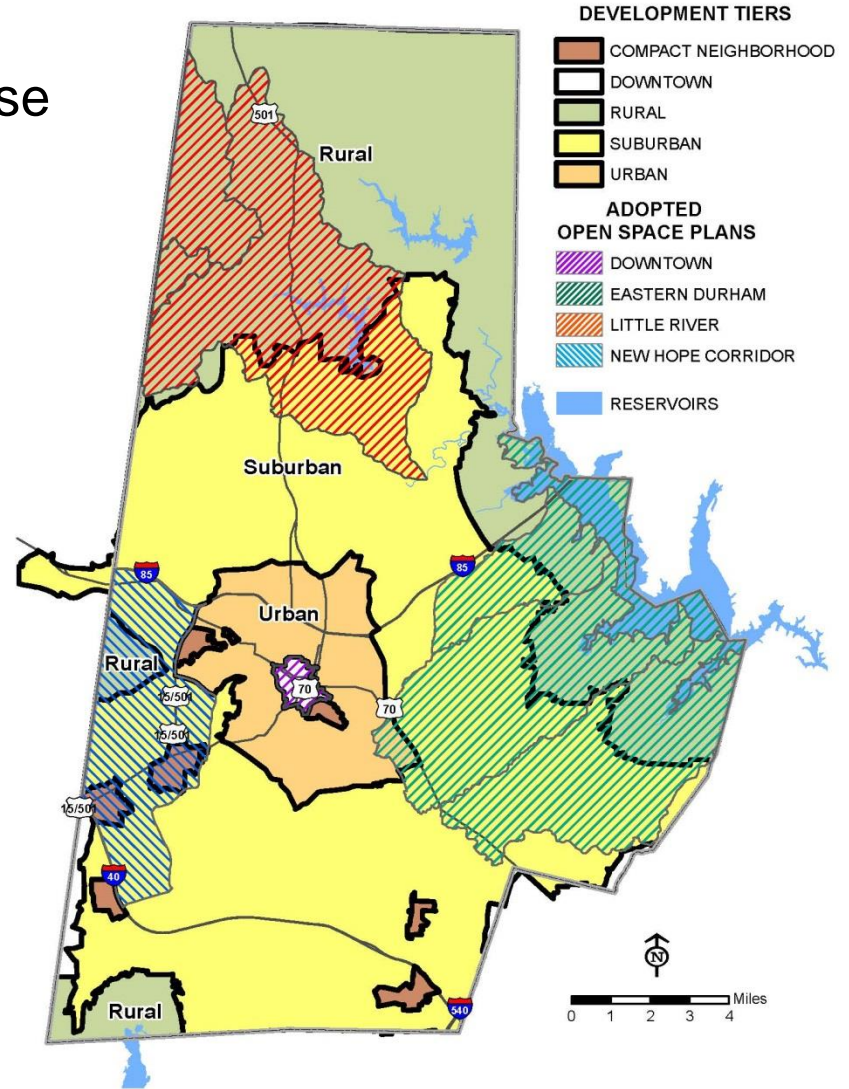
DURHAM



1869
CITY OF MEDICINE

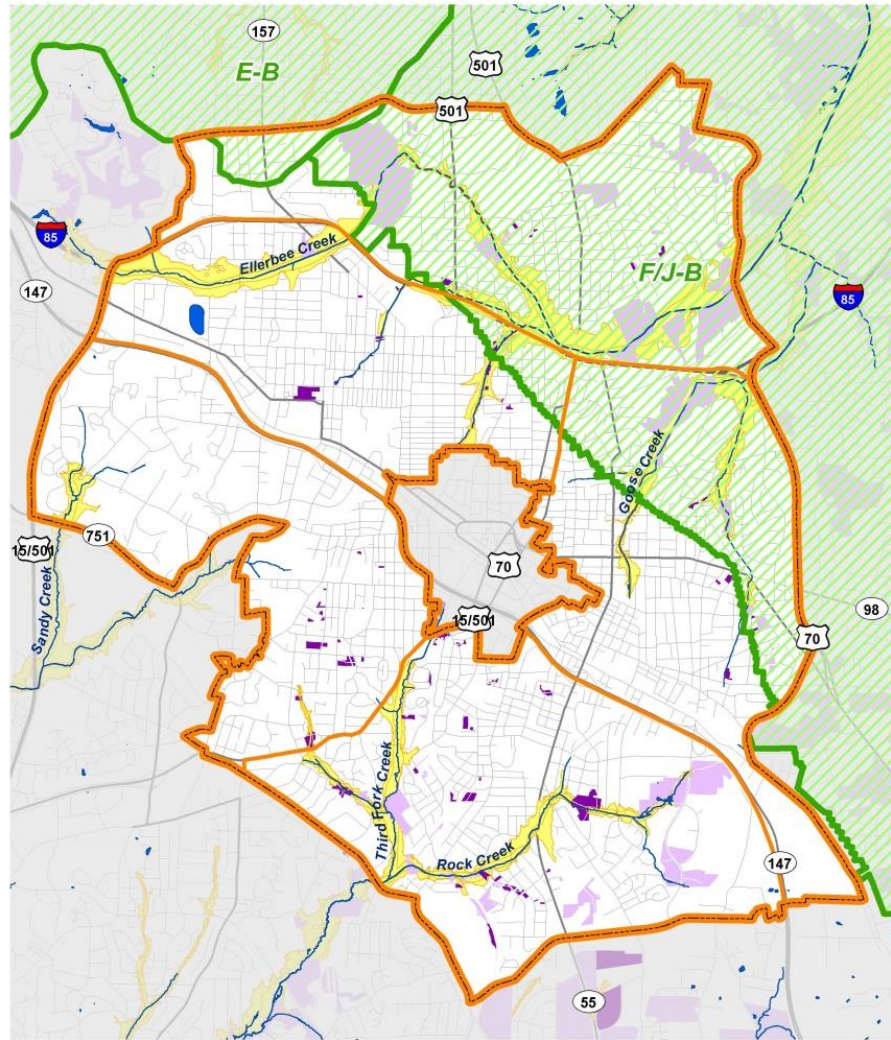


Background and Purpose





*High Value Properties
Identified in Watershed
Management
Improvement Plans*

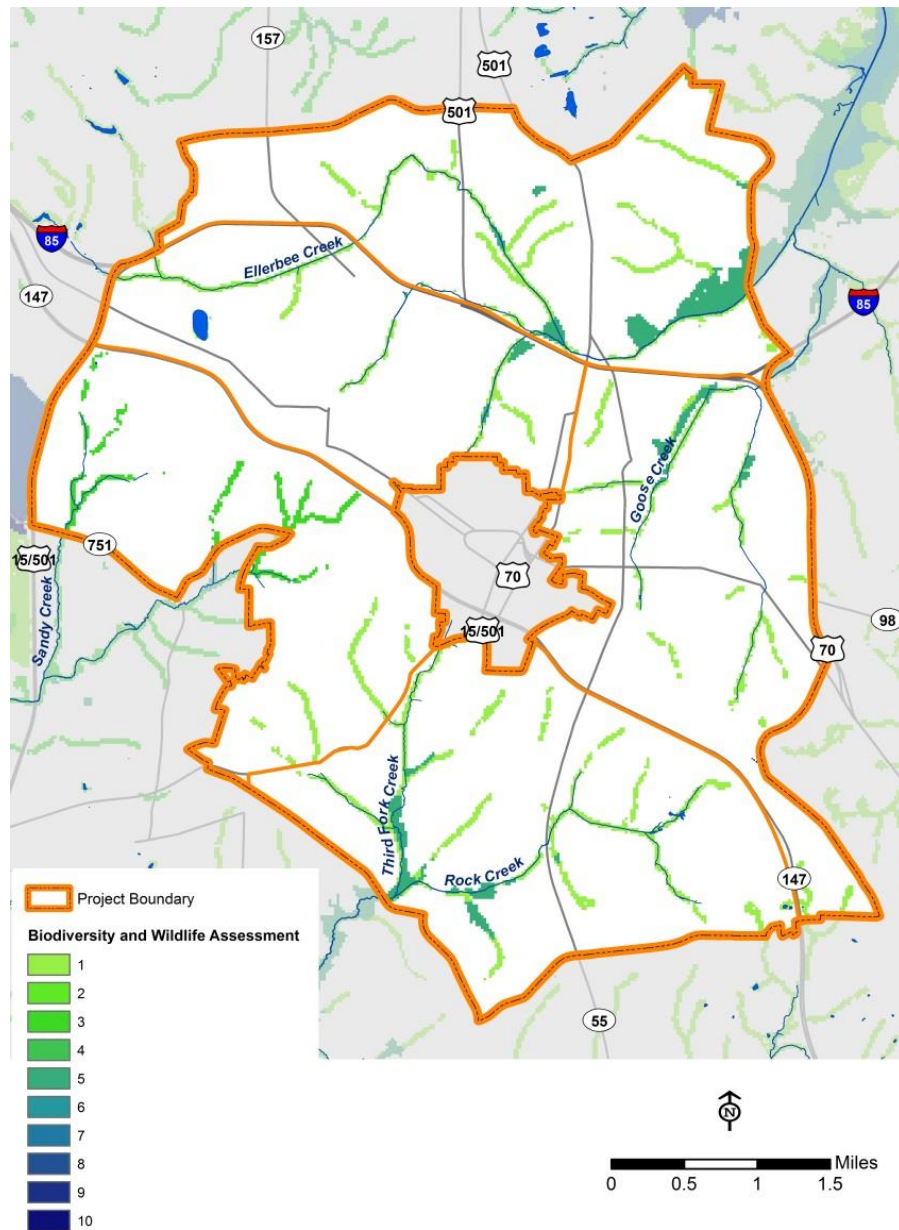


- Project Boundary
- Floodplain
- Watershed Overlay Districts
- Priority Sites**
- Keystone Sites
- Urban Gem



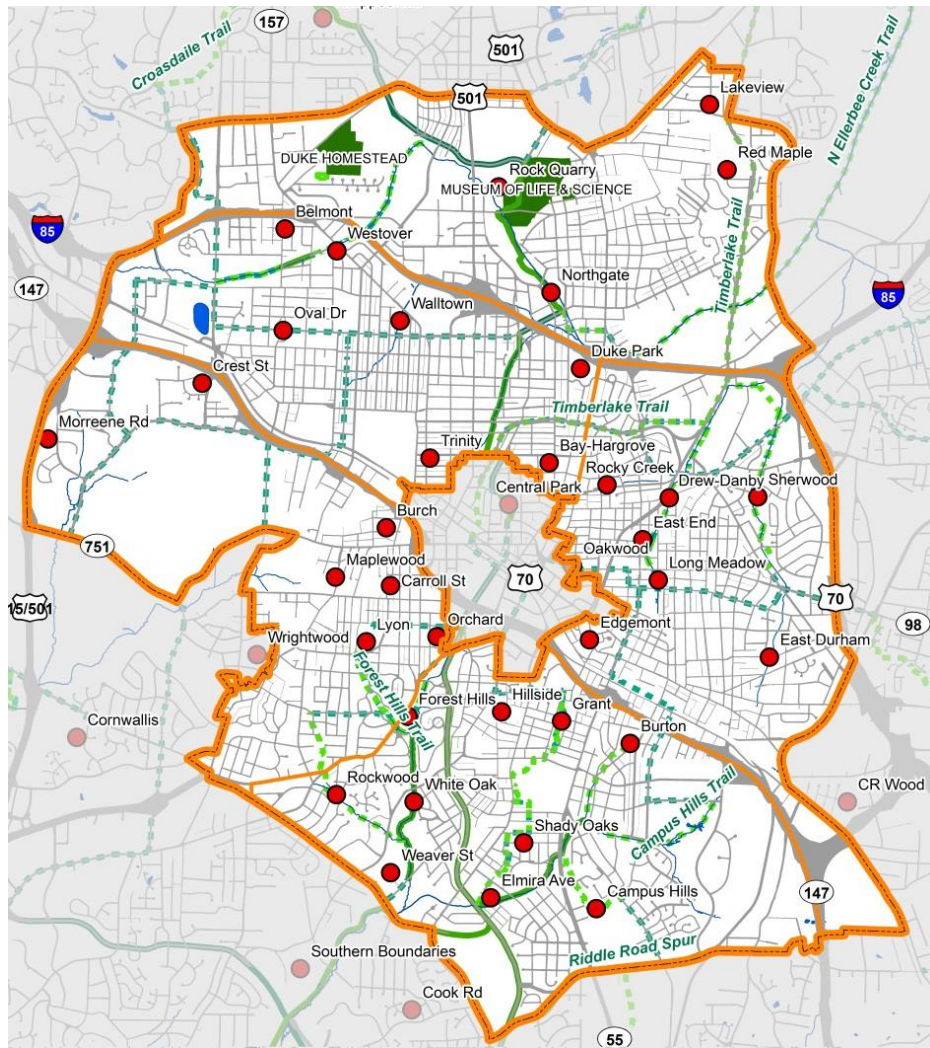


*Biodiversity and
Wildlife Assessment*

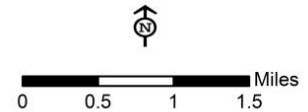




Parks and Trails
Inventory



-  Project Boundary
-  Parks
-  Other Important Sites
-  Existing Trail
-  Planned Trail



DURHAM

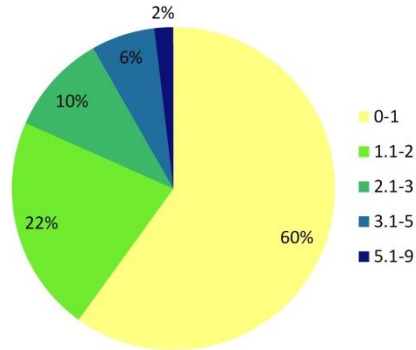


1869
CITY OF MEDICINE

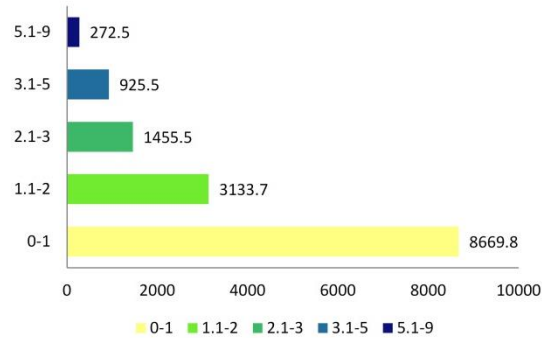


DURHAM
COUNTY

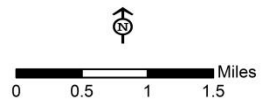
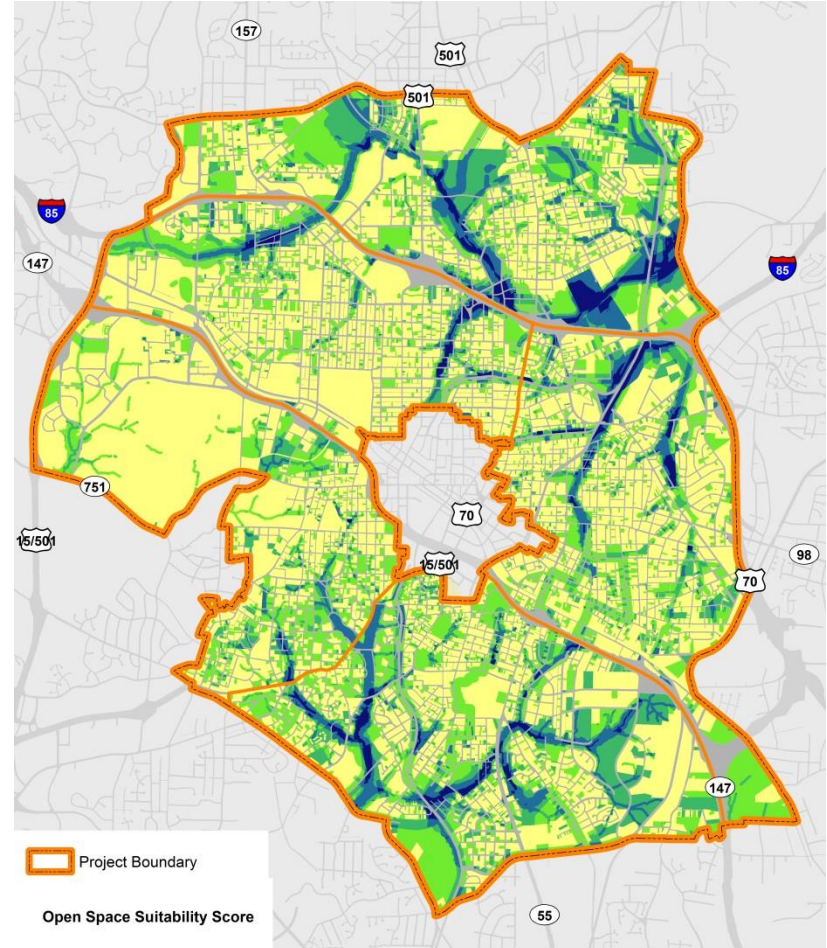
Suitability Scores by Percent of Study Area



Suitability Scores by Acreage



Open Space Suitability



DURHAM

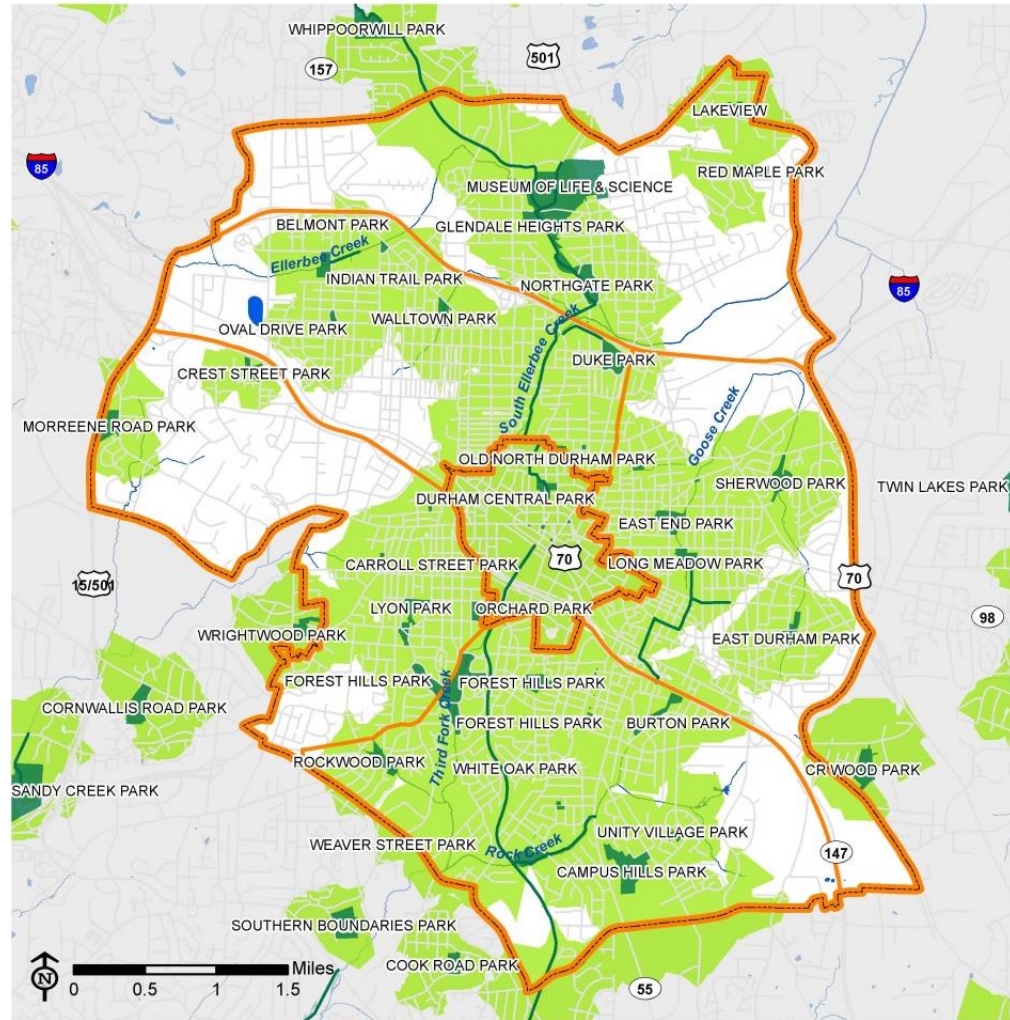


1869
CITY OF MEDICINE



DURHAM
COUNTY

*Park Proximity and
Gap Analysis*



-  Project Boundary
-  Public Trails
-  Public Parks
-  1/2 Mile "Service Area" around parks and trails

DURHAM

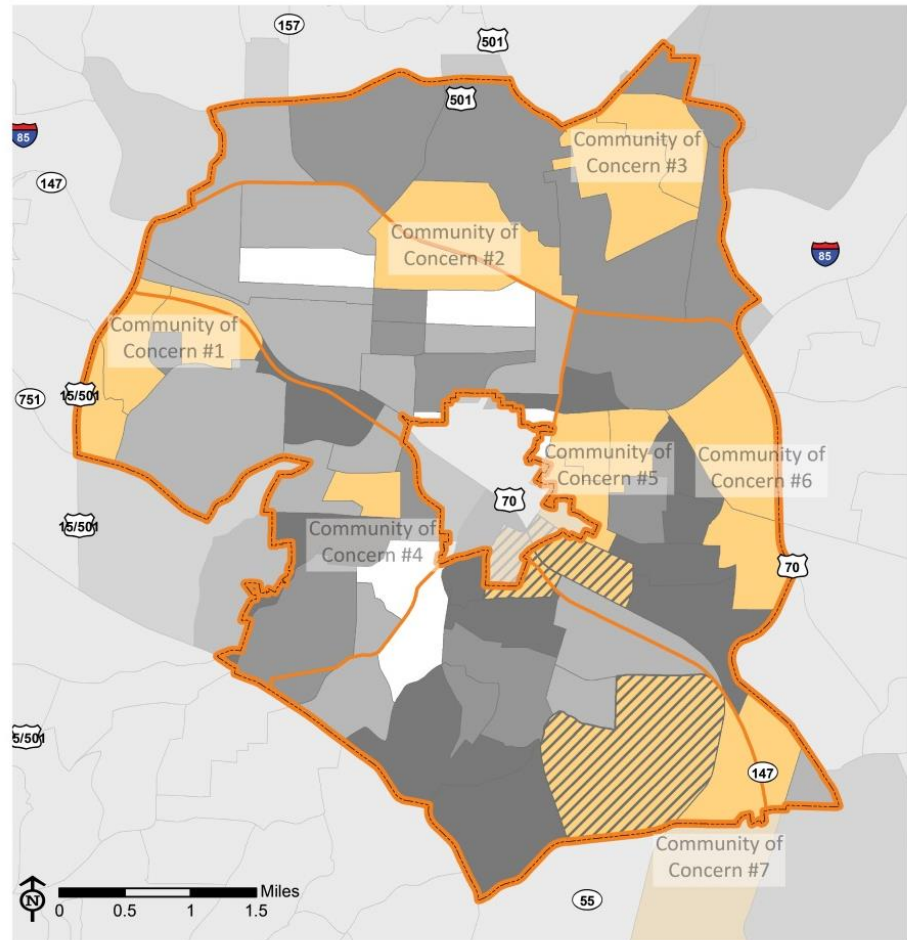


1869
CITY OF MEDICINE



DURHAM
COUNTY

*Environmental Justice
Communities of Concern*

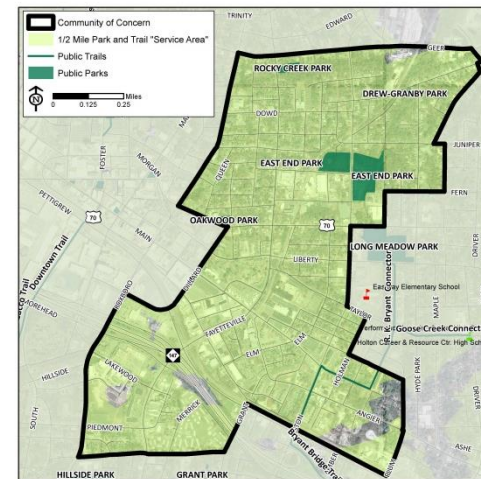
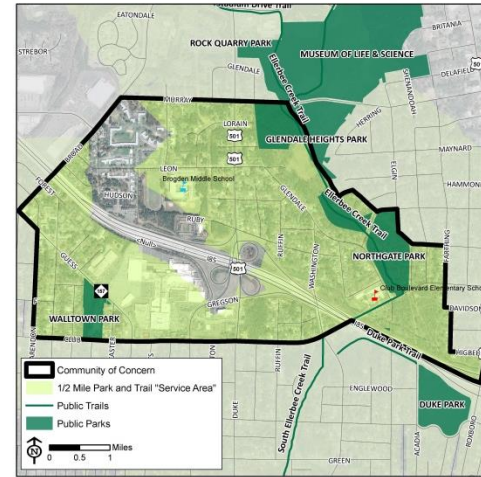
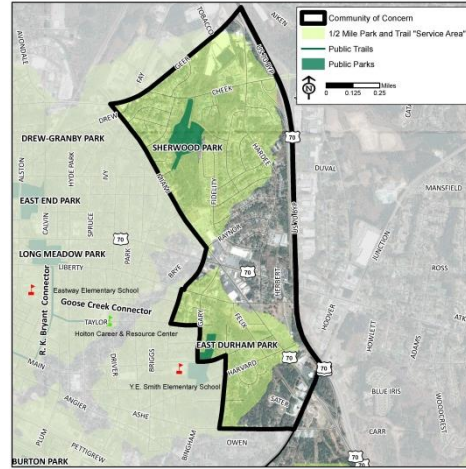


Communities of Concern



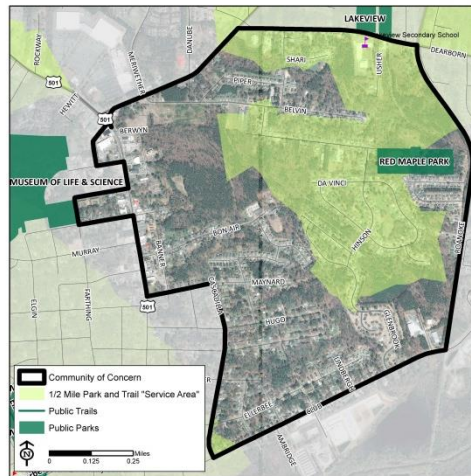
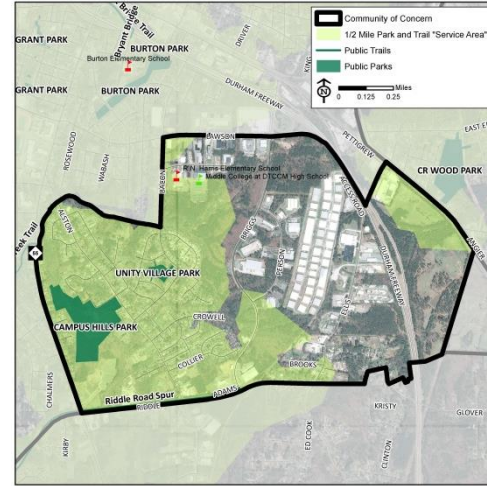
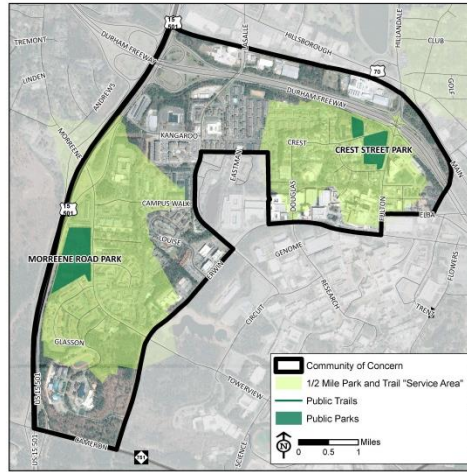


Communities of Concern





Communities of Concern





Objectives and Recommendations

1. Well-Maintained and Integrated Open Space System
2. Increase Recreation and Open Space
3. Improve Access to Open Space
4. Protect and Improve Environmental Quality
5. Engage Communities in Stewardship of Open Spaces
6. Increase Tree Canopy

DURHAM

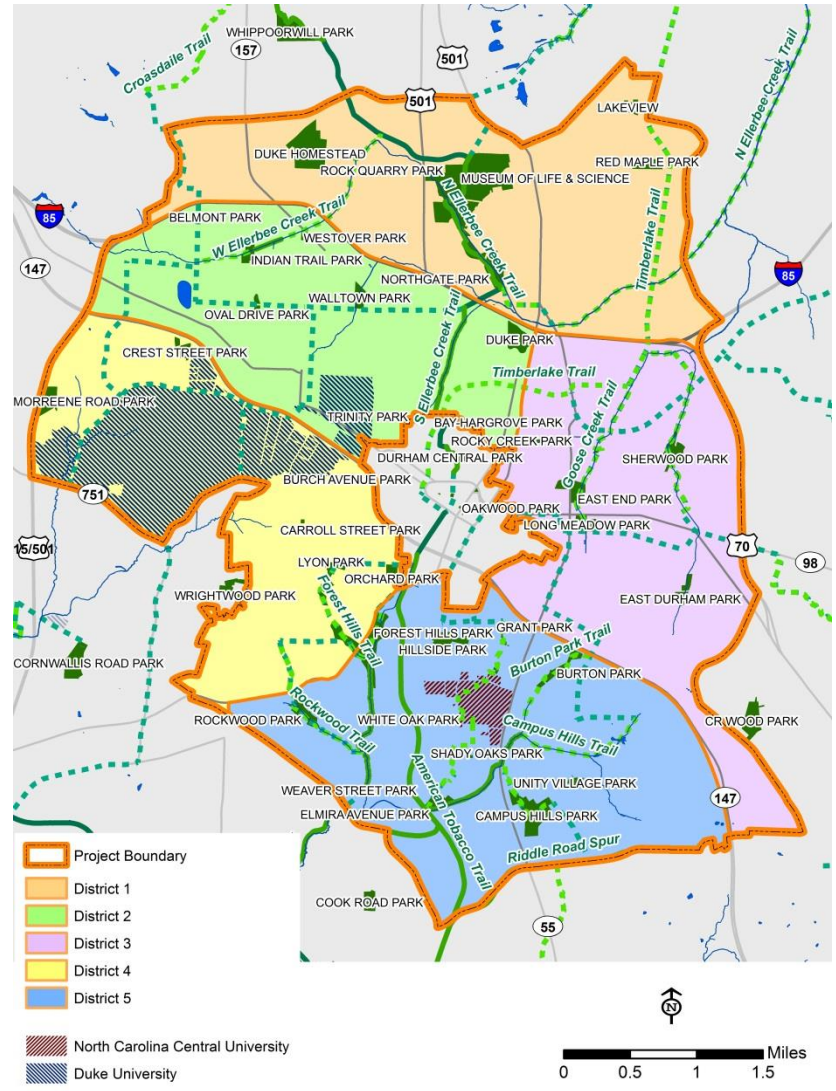


1869
CITY OF MEDICINE



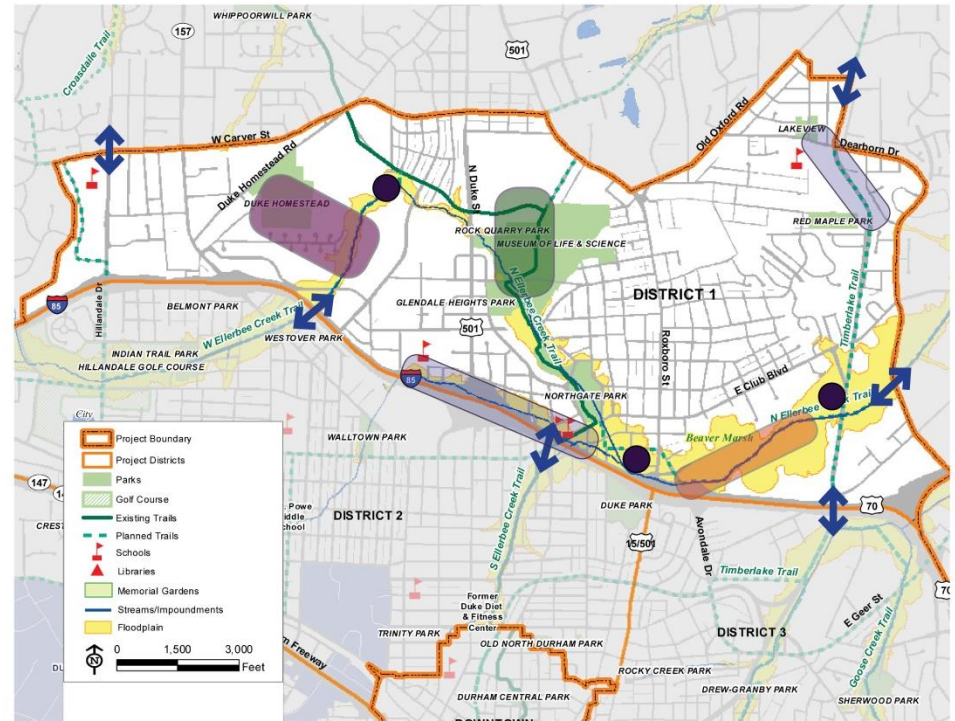
DURHAM
COUNTY

Open Space Districts





District 1 Recommendations



Develop an access program for open space and walking trails that connect the Duke Homestead site to the surrounding neighborhood and the North Ellerbe Creek Trail.

Partner with the Ellerbe Creek Association to acquire additional properties in conjunction with the Ellerbe Creek Association's "Priority Lands Analysis" and finish the greenway from Avondale Avenue to Beaver Marsh to the Timberlake Trail.

Develop better pedestrian links and linear open space between The Museum of Life and Science and Rock Quarry Park; develop a parking solution for the attractions of the area, through the use of linear open space.

Establish and implement a network of green connections that increases access to parks, open spaces.

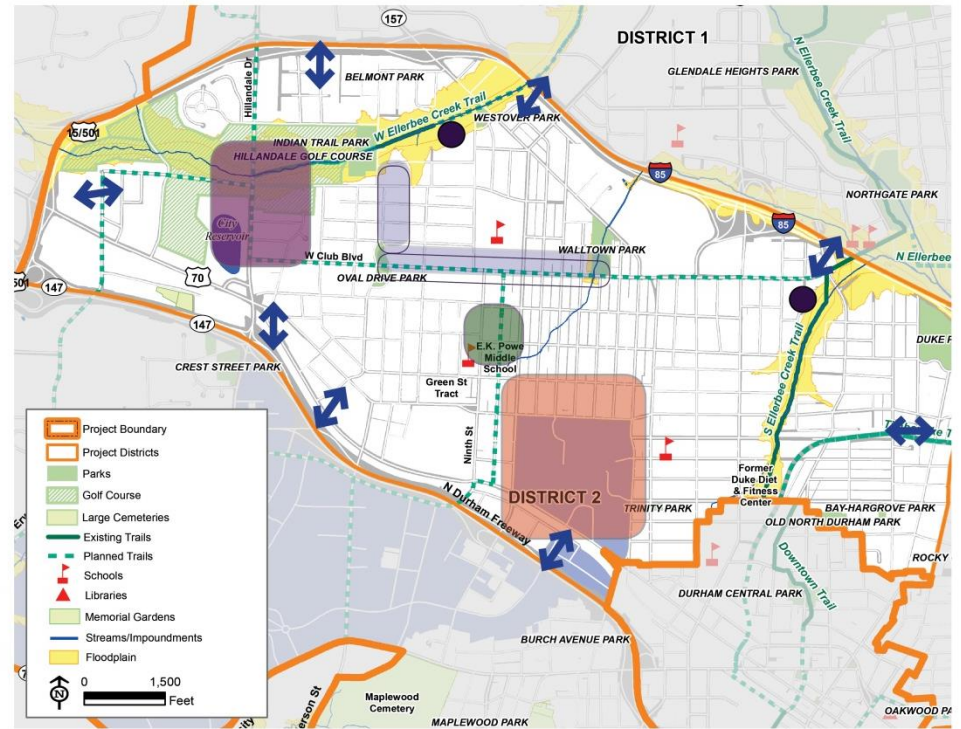
When flood plain properties are already developed, encourage their redevelopment to integrate stormwater management and open space amenities.

Crossings and Connections

Promote pedestrian and bicycle friendly crossings that facilitate connections to open space corridors in other districts using complete streets and green infrastructure construction.



District 2 Recommendations



● Open the Williams City Reservoir to the public for limited open space access to develop a walking trail loop; develop meadow and wetland plantings to increase water quality and continue to support Hillandale golf course as a publicly accessible open space.

● Maintain public accessibility to Duke University's East Campus walking trail by continuing to foster ties with Duke University and neighborhoods.

● Consider developing Green Street tract as a brownfield and riparian restoration area, small park and outdoor classroom for E.K. Powe Elementary School.

● Establish and implement a network of green connections that increases access to parks, open spaces.

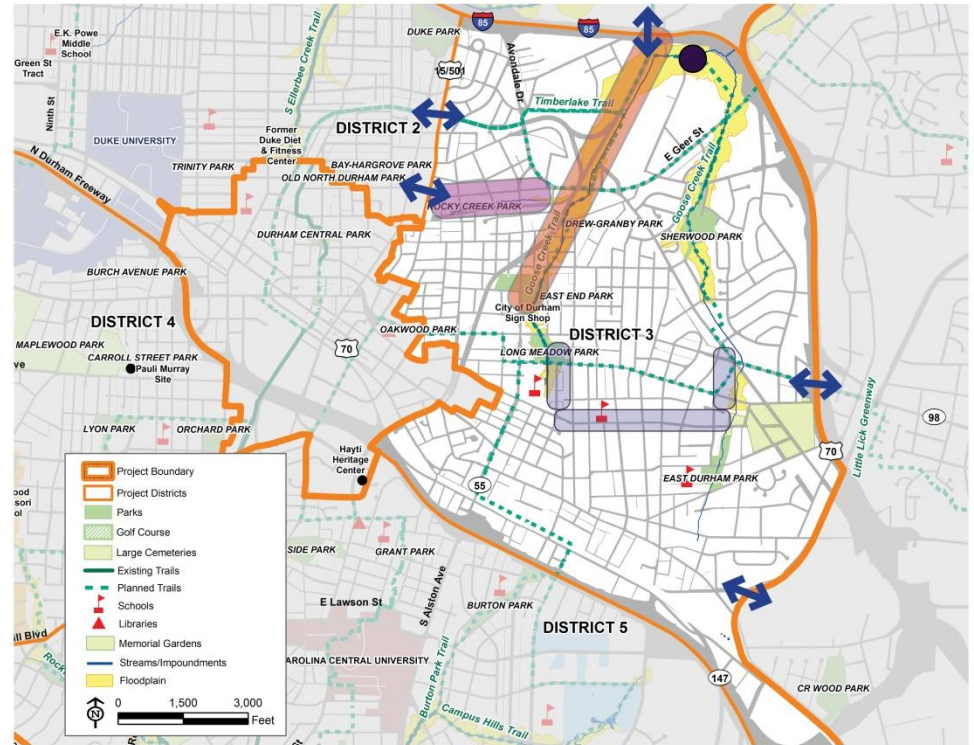
● When flood plain properties are already developed, encourage their redevelopment to integrate stormwater management and open space amenities.

Crossings and Connections

↔ Promote pedestrian and bicycle friendly crossings that facilitate connections to open space corridors in other districts using complete streets and green infrastructure construction.



District 3 Recommendations



Improve streetscapes and develop more east/west trail connections to create loops with the north south greenways and acquire right of way to the south of Rocky Creek Park.

Enhance pedestrian connections to community centers through additional acquisitions on Goose Creek.

Establish and implement a network of green connections that increases access to parks, open spaces.

When flood plain properties are already developed, encourage their redevelopment to

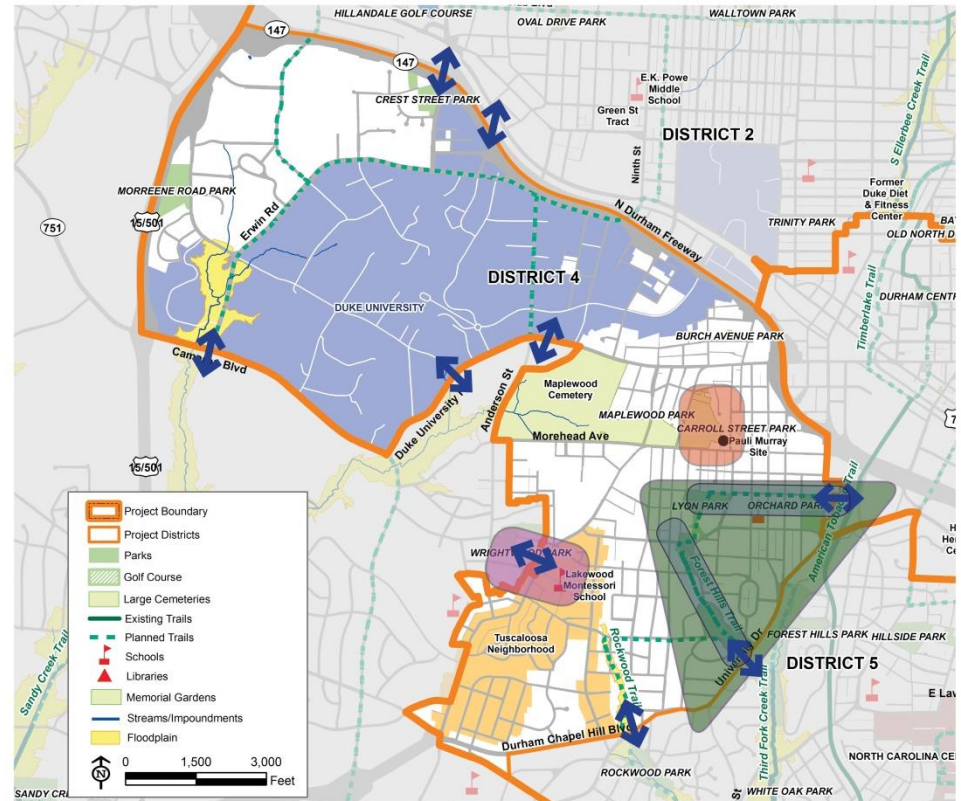
integrate stormwater management and open space amenities.

Crossings and Connections

Promote pedestrian and bicycle friendly crossings that facilitate connections to open space corridors in other districts using complete streets and green infrastructure construction.



District 4 Recommendations

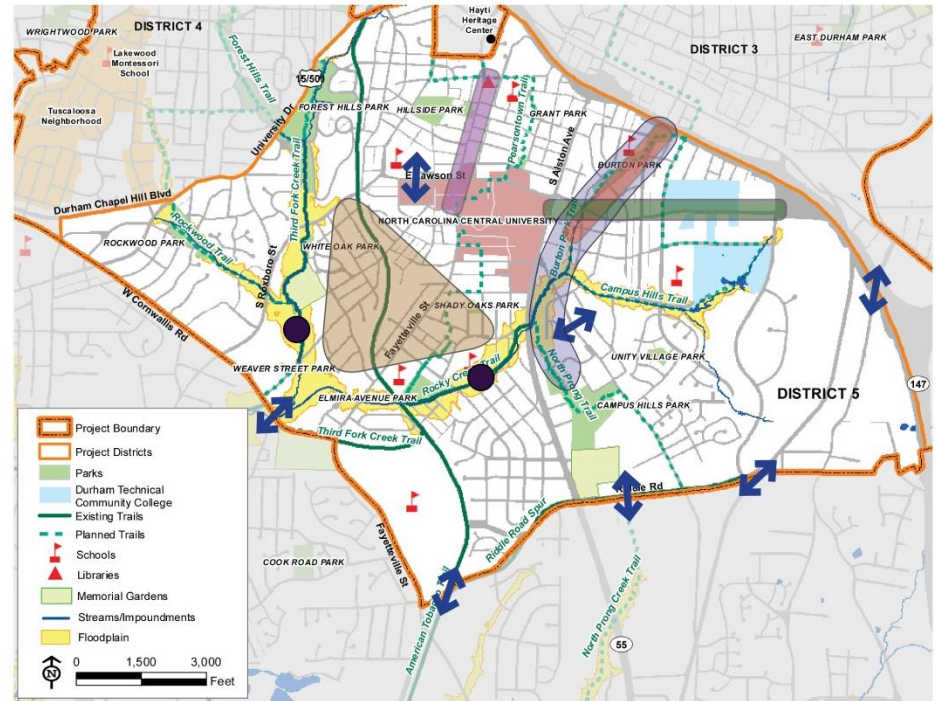


- Develop greenways connecting the Lakewood Montessori School to the Tuscaloosa neighborhood and to Wrightwood Park.
- Create better walking connections to the Pauli Murray site on Carroll Street and preserve and restore land on the east side of the Maplewood Cemetery for additional open space access.
- Better connectivity between planned trails, riparian corridors and the American Tobacco Trail.
- Establish and implement a network of green connections that increases access to parks, open spaces.

Crossings and Connections

- Promote pedestrian and bicycle friendly crossings that facilitate connections to open space corridors in other districts using complete streets and green infrastructure construction.

District 5 Recommendations



Develop greenways with linear open space connecting North Carolina Central University, the Hyati Heritage Center, and Downtown.

Foster linear open space connections to Burton Park including stream restoration and tree canopy along the proposed Burton Creek Trail.

Preserve and enhance larger tracts of forests in stream valley areas.

Create larger corridors to connect Burton Creek and Campus Hills Park.

Green connectors could be made to North Carolina Central University and Durham Tech that would allow for flexible use of open space.

When flood plain properties are already developed, encourage their redevelopment to integrate stormwater management and open space amenities.

Crossings and Connections

Promote pedestrian and bicycle friendly crossings that facilitate connections to open space corridors in other districts using complete streets and green infrastructure construction.

