



DURHAM POLICE HEADQUARTERS COMPLEX

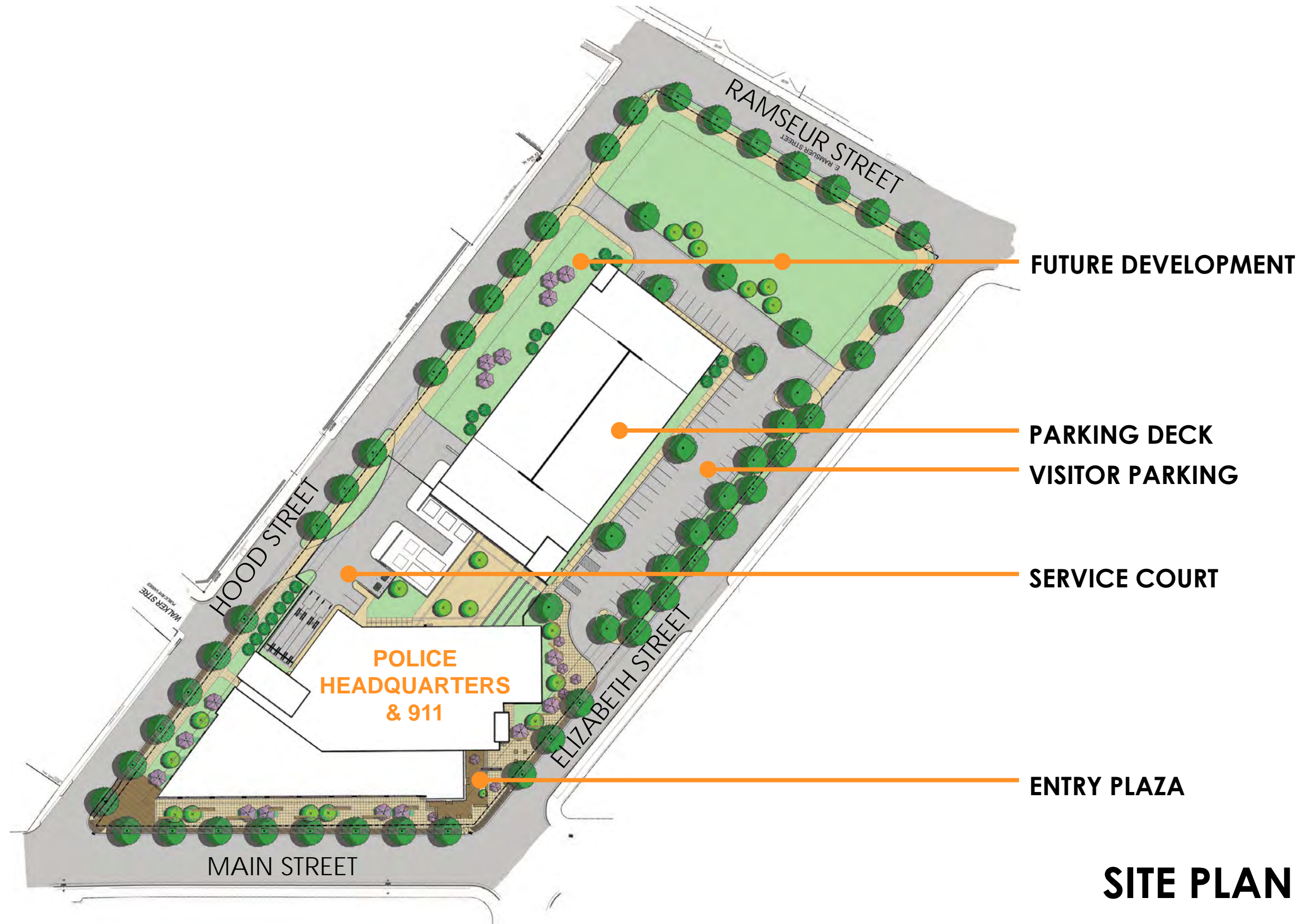
AGENDA

- **Design Update**
- **Construction Update**
- **Next Steps**



GUIDING DESIGN PRINCIPLES

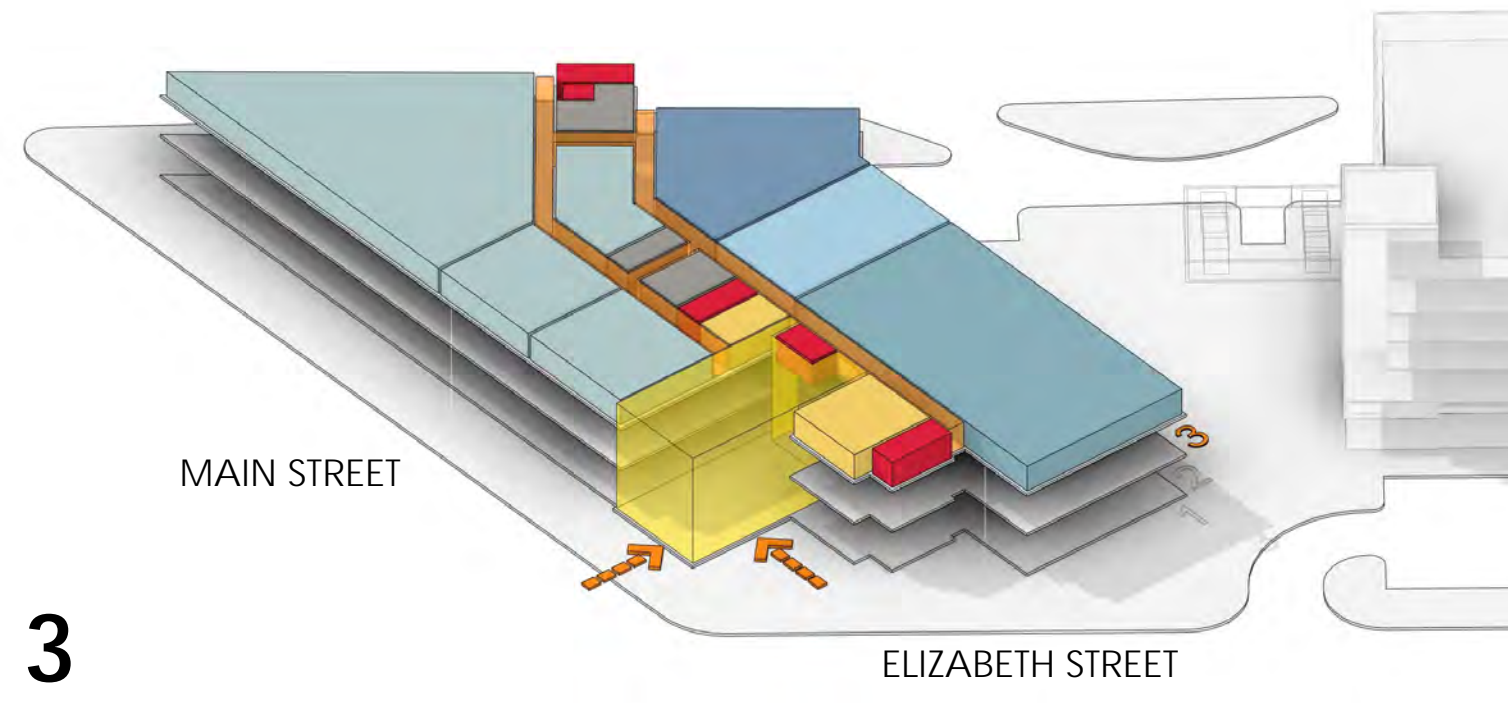
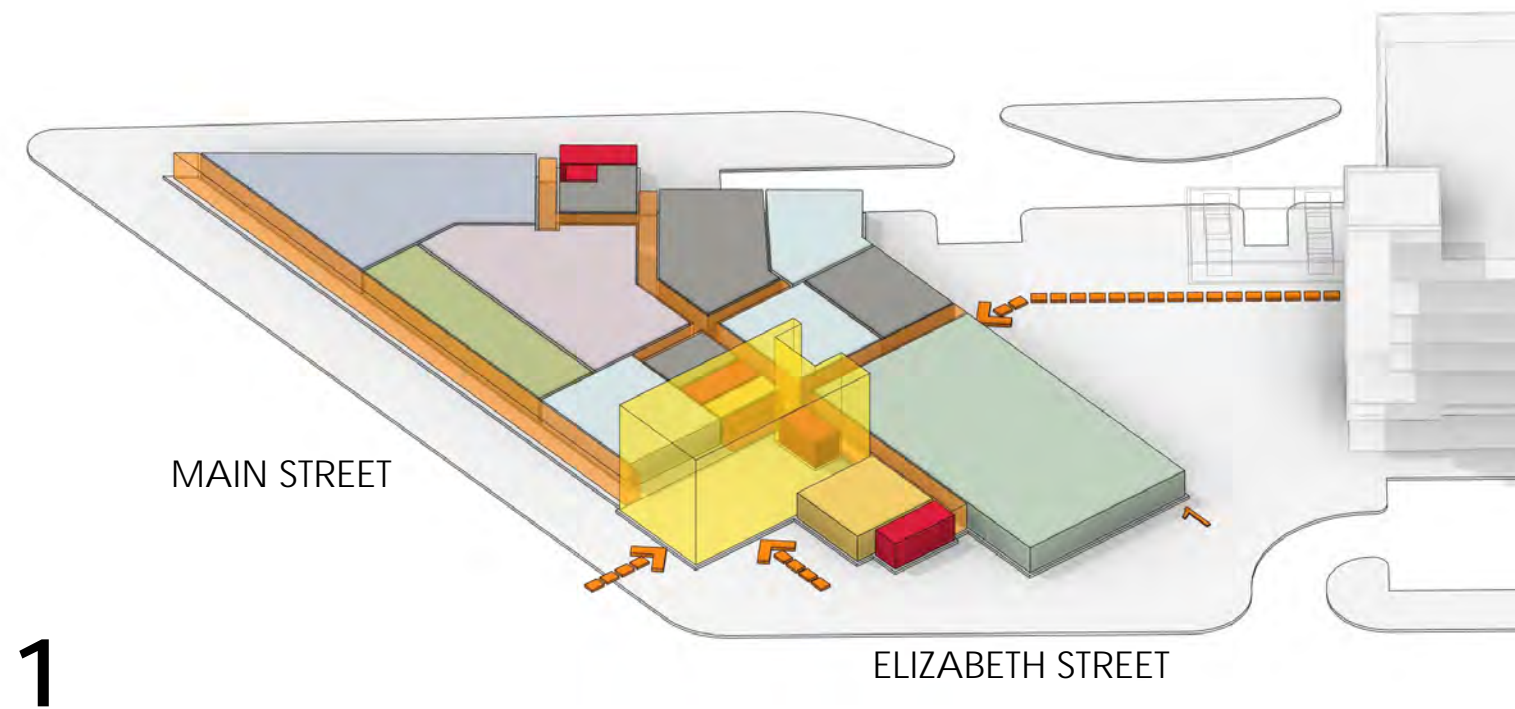
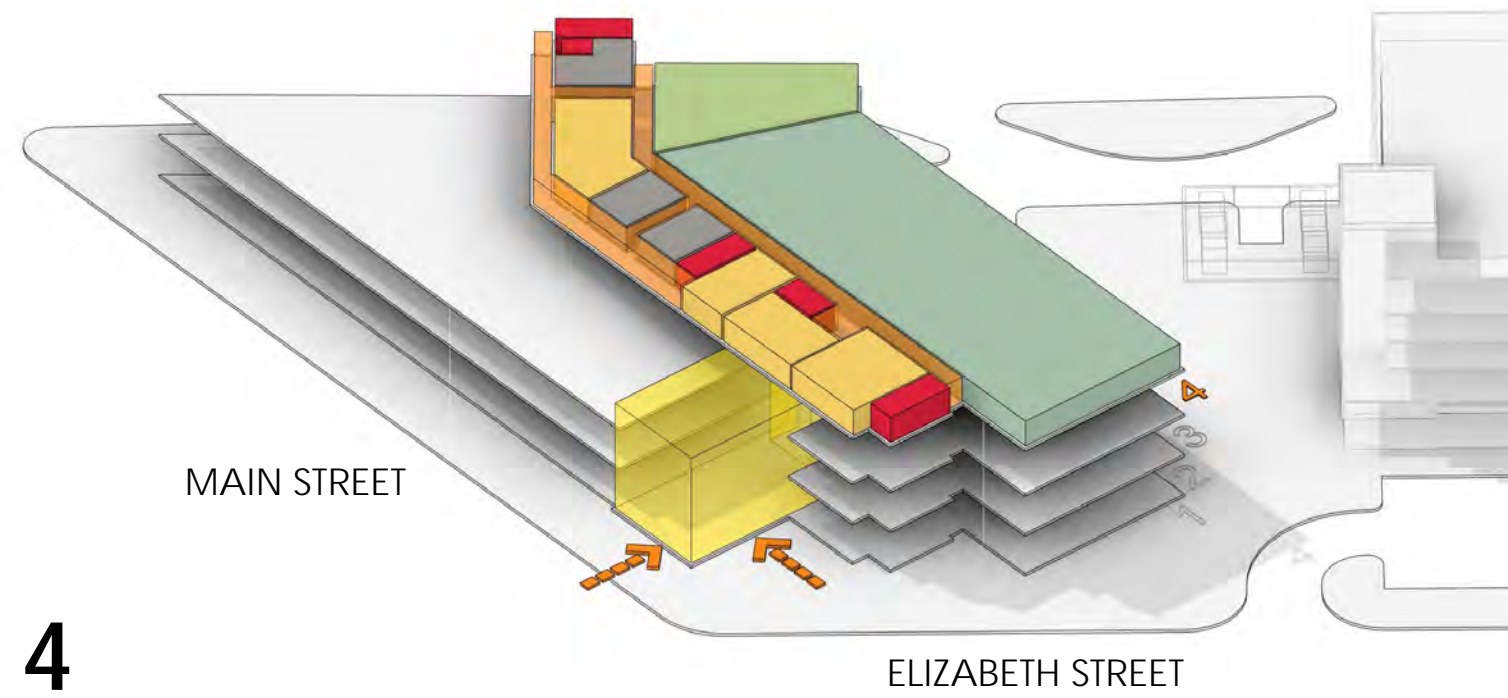
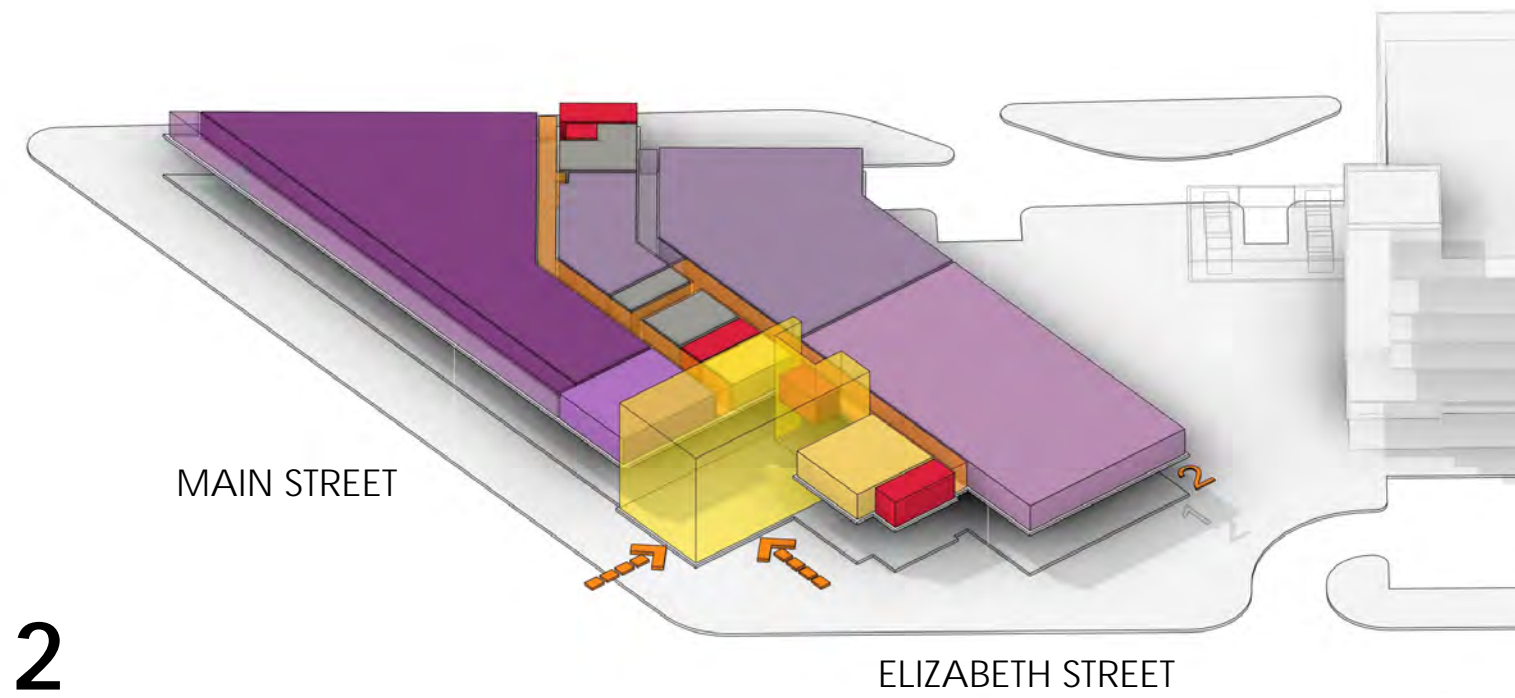
- **Activate Main Street**
- **Activate Ramseur Street**
- **Connectivity Between East Durham and Downtown**
- **Open Space/ Streetscape**
- **Provide Opportunities for Future Growth and Development**
- **Incorporate Public Art**
- **Pedestrian Friendly**
- **Minimize Surface Parking**
- **Safety and Security**



SITE PLAN

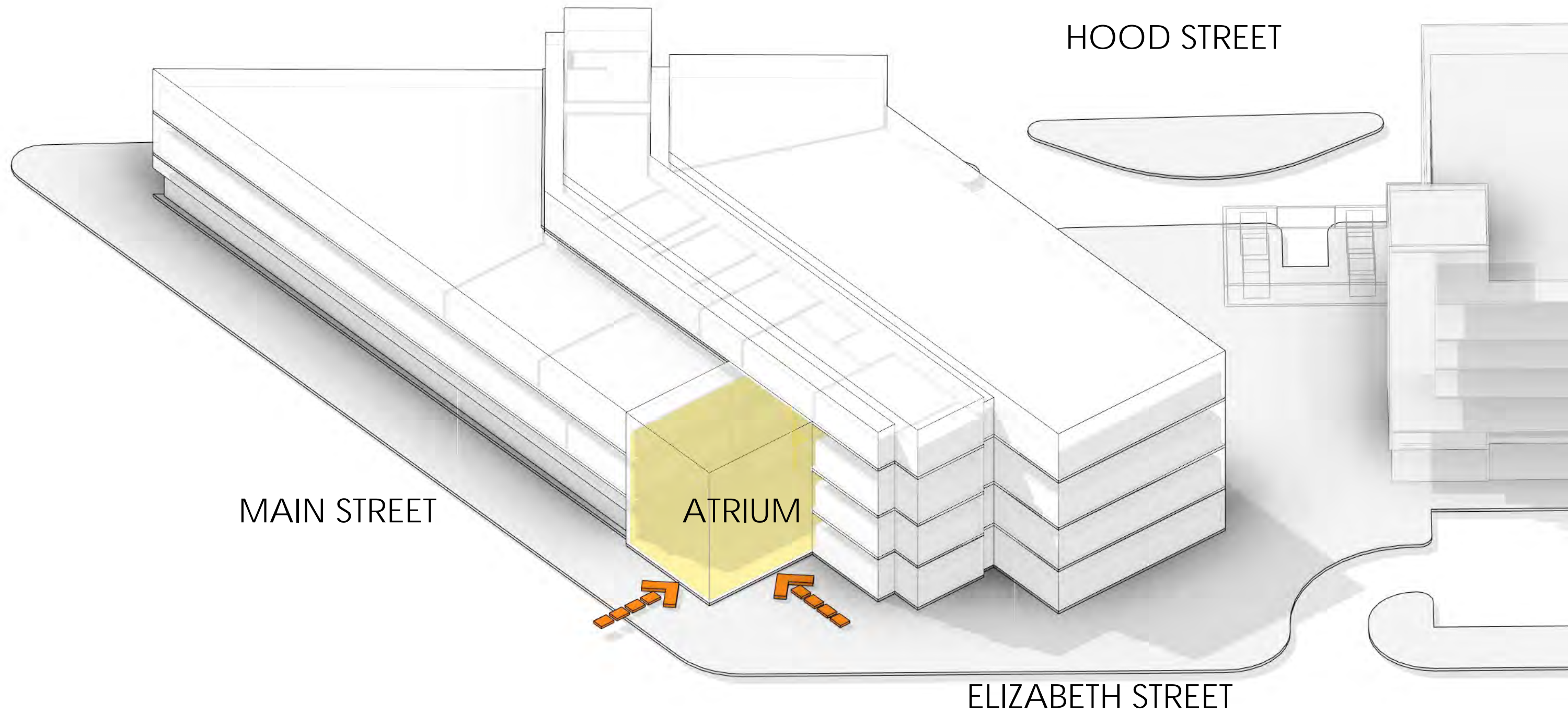
DURHAM POLICE HEADQUARTERS COMPLEX





PLANNING CONCEPT DIAGRAMS





MASSING DIAGRAM

DURHAM POLICE HEADQUARTERS COMPLEX

CONTEXT SURROUNDINGS



GOVERNMENT

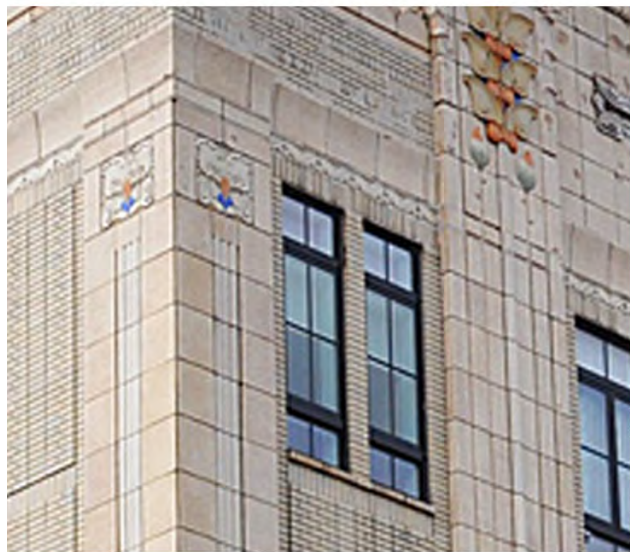


RESIDENTIAL

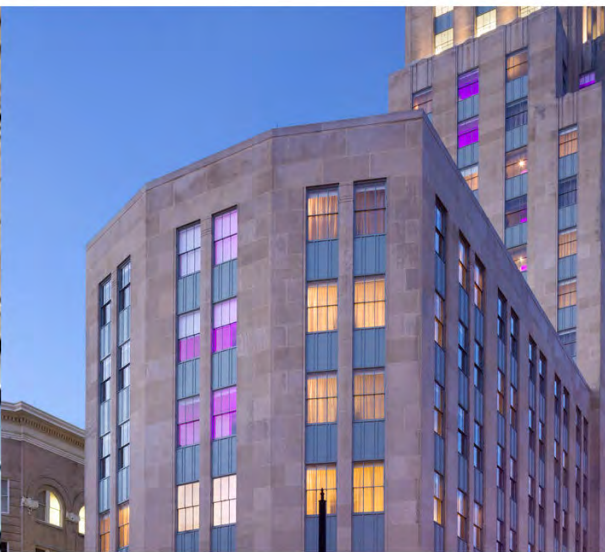


MIXED USE

CONTEXT SCALE & TEXTURE



KRESS



HILL / 21C



HSB / THE DURHAM



DVIII



DPAC



DURHAM POLICE HEADQUARTERS COMPLEX



VIEW FROM DOWNTOWN



DURHAM POLICE HEADQUARTERS COMPLEX



VIEW FROM EAST DURHAM



DURHAM POLICE HEADQUARTERS COMPLEX



BIRD'S EYE VIEW

DURHAM POLICE HEADQUARTERS COMPLEX





VIEW FROM MAIN STREET

DURHAM POLICE HEADQUARTERS COMPLEX





VIEW FROM EAST DURHAM

DURHAM POLICE HEADQUARTERS COMPLEX

12





DARK GREY BRICK

BASIS OF DESIGN: CAROLINA CERAMICS BLUE BLACK BLEND

DURHAM POLICE HEADQUARTERS COMPLEX





LIGHT GREY BRICK
BASIS OF DESIGN: Acme Brick Marble Grey

DURHAM POLICE HEADQUARTERS COMPLEX





METAL PANEL

BASIS OF DESIGN: Ti Coated Stainless

DURHAM POLICE HEADQUARTERS COMPLEX





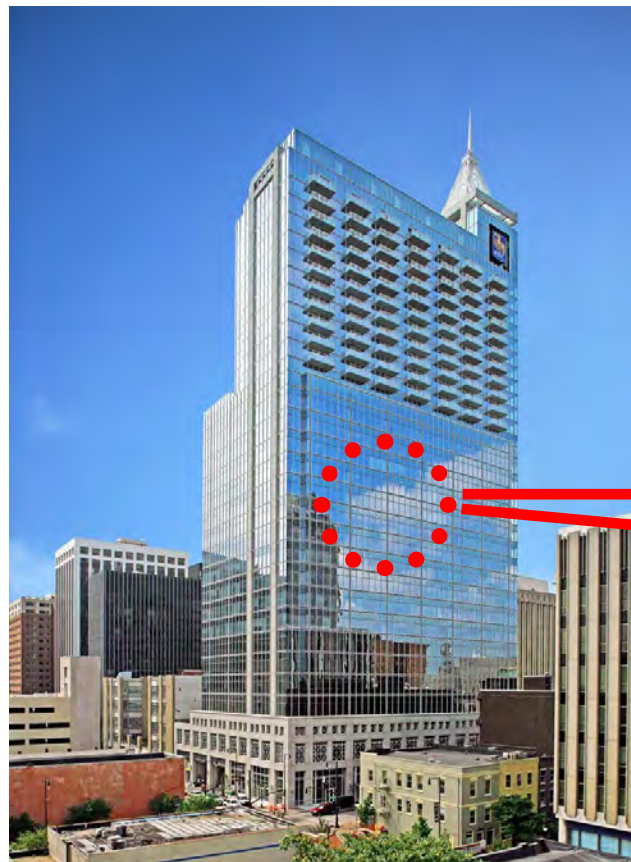
GLASS @ ATRIUM and MAIN STREET

BASIS OF DESIGN: VIRACON VE 1-85

DURHAM POLICE HEADQUARTERS COMPLEX

16





GLASS @ THE UPPER FLOORS

BASIS OF DESIGN: VIRACON VE 1-85

DURHAM POLICE HEADQUARTERS COMPLEX

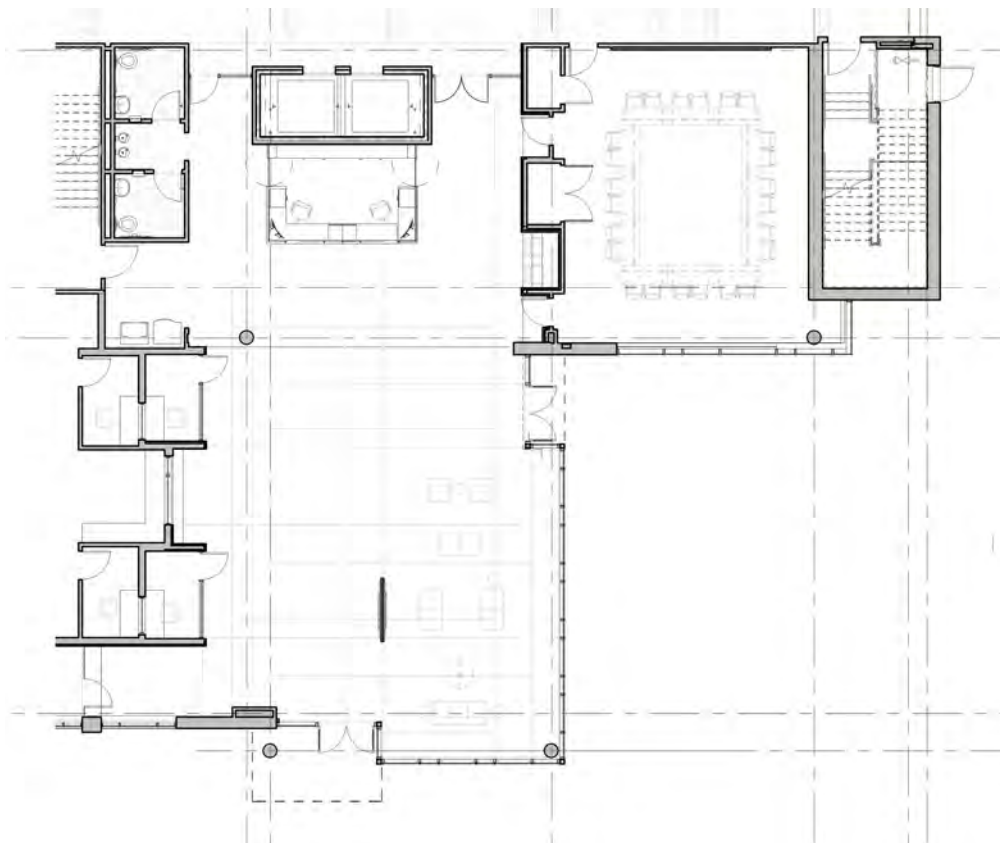




LOBBY



DURHAM POLICE HEADQUARTERS COMPLEX



LOBBY



DURHAM POLICE HEADQUARTERS COMPLEX



DURHAM POLICE HEADQUARTERS COMPLEX

20

PROJECT COST

Bid Package	Preliminary Guaranteed Maximum Price	Guaranteed Maximum Price	Variance	% (under)/over budget
1	\$2,145,853	\$1,547,359	(\$598,494)	28%
2	\$14,978,310			
Total Phase 1 & 2	\$17,124,163	\$1,547,359	(\$598,494)	

- Variance Under-run added to Bid Package 3 Budget
- Bid Package 3 is final Bid Package
- 50% CD (Construction Document) Estimate is the most current for Bid Package 3
- 50% CD Reconciled Estimate equals Current Budget - \$49,647,359*

* includes \$272,927 of abatement escrow funds

* includes \$1,509,675 of design/estimating contingency



PHASE 1 UBE UPDATE

Cost of Work - \$865,720

UBE Participation – 100%

Trifecta Service Company (\$720,324) – Asian American

KWD Contracting Group (\$145,396) – African American, Women Owned

Callis Contractors (CM Partner) – African American

Allieway Marketing (Website Design) – Women Owned

3 jobs posted with NCWorks, 1 position filled

Average daily workforce – 12



CONSTRUCTION UPDATE

PHASE 1 (DEMOLITION)

- Mobilized to site on July 25
- All hazardous material abatement completed
- Soil remediation has begun

PHASE 2 (STRUCTURE)

- Bid opened
- Conducting scope reviews and evaluations
- Mid-October target for foundation start
- January start of structural steel

PHASE 3 (BUILDING)

- Receiving and evaluating subcontractor prequalifications
- UBE information session on September 8
- Mid-September to mid-November bidding period



NEXT STEPS

Site Planning Review Process	Ongoing
Demolition/Abatement/Environmental Work	Ongoing
Completion of Construction Documents Phase	September 30
Construction Begins	Fall 2016
Construction Completion	Summer 2018





DURHAM POLICE HEADQUARTERS COMPLEX